

LAURENTS / BERNSTEIN / SONDHEIM / ROBBINS

Lyric

WEST SIDE STORY

 **Invesco QQQ**
Season Sponsor

In this issue

Anthony Freud
General Director,
President & CEO

Enrique Mazzola
Music Director



Maria (Mikaela Bennett) and Tony (Corey Cott) as the ill-fated couple in *West Side Story* (2018/19). | pp. 14-35

6 WELCOME TO YOUR LYRIC

- 6 A letter from the Chair and the General Director
- 8 Board of Directors
- 10 On a grand scale: Previewing Lyric's bravura 2023/24 Season

15 TONIGHT'S PERFORMANCE

- 16 Title page and cast
- 18 Orchestra
- 20 Musical Numbers
- 21 From the Director
- 22 Musical Notes: Latinx identity and the evolution of a classic
- 25 Artist profiles

36 RYAN OPERA CENTER

- 37 Ryan Opera Center alumni around the world
- 37 Program staff

38 THANK YOU FOR YOUR SUPPORT

- 38 Bravissimi
- 40 Production sponsors
- 43 Supporting our future—endowments at Lyric
- 44 Ardis Krainik Society
- 48 Corporate partnerships and foundation support
- 50 Annual individual and foundation support
- 60 Commemorative gifts
- 61 Artistic roster
- 62 Lyric staff
- 64 People of Lyric: Meet the Senior Director of Learning Programs at Lyric



The Daughter of the Regiment is among next season's highlights. | pp. 10-13

On the cover:

Photo © Lyric Opera of Chicago

Lyric



HOLLY H. GILSON
Senior Director, Communications

DAVID ZIVAN
Program Book Editor

CATHY KIEPURA
Program Book Design

JESSICA M. PEDROZA, PMP
Project Manager

Administrative Offices
20 North Wacker Drive, Suite 860
Chicago, Illinois 60606
lyricopera.org

SAMETZ BLACKSTONE ASSOCIATES
Visual Direction

PMGMA, Inc.

PMGMA, Inc.
340 Anthony Trail
Northbrook, IL 60062
pmgma.com

Gail McGrath
Publisher & President

Sheldon Levin
Finance

Rand Brichta
Arnie Hoffman
Michael Hedge
Account Managers

For advertising information call 847-770-4621.
To see our Advertising Terms and Conditions,
visit our website at pmgma.com

All contents copyrighted. All rights reserved.
Nothing may be reproduced in any manner
without written permission. © 2023

PMGMA, Inc. is a Woman Owned Business

**You can view this program on your mobile device
at www.pmgma.com.**

**For the latest information on this
performance, please scan this QR code.**



Lyric

From the Chair and the General Director

Welcome to the Lyric Opera House!

We are delighted you have joined us for this thrilling production of one of the great American musicals. *West Side Story* was revolutionary when it premiered on Broadway in 1957, bringing together a creative team of some of the titans of 20th century musical theater—director and choreographer Jerome Robbins, writer Arthur Laurents, composer Leonard Bernstein, and lyricist Stephen Sondheim—and their masterpiece still feels relevant and fresh onstage today.

The team we have assembled to bring it to life here is similarly distinguished. It's a great honor to welcome back acclaimed director Francesca Zambello, internationally known and respected for her exciting vision. Our cast, too, has brought tremendous excitement to this show—especially our star pair, both making their debuts at Lyric. Our Maria, Kanisha Feliciano, is fresh from the closing run of Broadway's *Phantom of the Opera*, where she was the first Latina actress ever to take the lead role. Her love interest, Tony, is played by Ryan McCartan, a well-known television star with leading roles on Broadway in *Frozen* and *Wicked*, among other shows.

To see these radiant performers on this, the biggest stage in the city of Chicago, provides a rare opportunity to see this show's captivating choreography and hear its gorgeous music at a scale that truly brings it alive, with the power of the Lyric Opera Orchestra lead by our dazzling music director for this production, James Lowe.

We know that some in the audience today are making their debut here, as well. We welcome you with open arms. Whether it is your first time at Lyric or you are a longtime audience member, we trust you'll be thrilled with the performance—and we hope to see you again for our exciting 2023/24 Season.

On behalf of everyone at Lyric Opera of Chicago, we hope you enjoy *West Side Story*.
Something's coming—something good!



Sylvia Neil

SYLVIA NEIL
Chair



Anthony Freud Obe

ANTHONY FREUD OBE
President, General Director & CEO
The Women's Board Endowed Chair

Lyric

Board of Directors

OFFICERS

The Honorable J.B. Pritzker
The Honorable Brandon Johnson
Honorary Chairs of the Board
Edgar D. Jannotta
Co-Chair Emeritus
Allan B. Muchin
Co-Chair Emeritus
David T. Ormesher
Co-Chair Emeritus & Chair of the Executive Committee
Sylvia Neil
Chair of the Board
Anthony Freud
General Director, President & CEO The Women's Board Endowed Chair
James L. Alexander
Vice Chair
Enrique Mazzola
Vice Chair
Shirley Welsh Ryan
Vice Chair
Eric S. Smith
Vice Chair
William C. Vance
Vice Chair
Donna Van Eekeren
Secretary
Dan Grossman
Treasurer
Elizabeth Hurley
Assistant Secretary
Vicente F. Milianti
Assistant Treasurer

LIFE DIRECTORS

Gilda R. Buchbinder
Ronald J. Gidwitz
Ruth Ann M. Gillis
Howard L. Gottlieb
Dietrich M. Gross
Edgar D. Jannotta
George E. Johnson
Susan Kiphart
Robert W. Lane
James J. O'Connor
Gordon Segal
Robert E. Wood II

DIRECTORS

Katherine A. Abelson*
James L. Alexander*
John P. Amboian
Paul F. Anderson
Julie Baskes*
Mrs. James N. Bay
Allan E. Bulley, III
John E. Butler
Marion A. Cameron-Gray*
Amy Carbone
Orit Carpenter
Jane Chu*
Richard W. Colburn**
Michael P. Cole
Francesca Cornelli
Vinay Couto
Scott Cozad
Lester Crown*
Marsha Cruzan*
Laura DeFelice
Dan Draper*
Allan Drebin*
Charles Droege*

Chaz Ebert
Lois Eisen
James E. Fellowes
Matthew A. Fisher
Sonia Florian*
Robert B. Ford
Steven L. Fradkin*
Karen Freeman-Wilson
Anthony Freud*
Ethel C. Gofen
Melvin Gray
Karen Z. Gray-Krehbiel
Maria C. Green*
Dan Grossman*
Gary Haase
Ralph Hasbun
Elliot E. Hirsch
Jodi Hochberger Rubenstein
J. Thomas Hurvis
Gregory K. Jones
Stephen A. Kaplan*
Vikram Karnani
Neil T. Kawashima
Kip Kelley II
Lori Ann Komisar
Josef Lakonishok*
Jonathan Lewis
Craig C. Martin*
Enrique Mazzola*
Robert J. McCullen
Blythe J. McGarvie
Mimi Mitchell
Frank B. Modruson**
Susan E. Morrison
Allan B. Muchin*
Linda K. Myers
Jeffrey C. Neal
H. Gael Neeson

Sylvia Neil*
John D. Nichols*
Gregory J. O'Leary
Sharon F. Oberlander
Olufunmilayo I. Olopade
David T. Ormesher*
William A. Osborn
Anna Paglia
Matthew J. Parr
Jane DiRenzo Pigott*
Tanya Polsky
Jose Luis Prado
Don M. Randel
Brenda Robinson*
Joseph O. Rubinelli, Jr.*
Richard O. Ryan
Shirley Welsh Ryan*
E. Scott Santi*
Christine Schyvinck
Nancy S. Searle
Marsha Serlin
Brenda M. Shapiro*
Richard W. Shepro*
Eric S. Smith*
Kevin Smith
Penelope Steiner
Pam Friend Szokol*
Nasrin Thierer*
Cherryl T. Thomas*
Bryan Traubert
Olivia Tyrrell*
Donna Van Eekeren*
William C. Vance*
Roberta L. Washlow
Sir Andrew Davis
Music Director Emeritus
William Mason
General Director Emeritus

+ Audit Committee
* Executive Committee
• National Member

Lyric

Flights of fancy and soaring melodies

Lyric's 2023/24 Season offers grand-scale masterpieces and exciting debuts both on the stage and on the podium.

The Flying Dutchman



THE DUTCHMAN
Tomasz Konieczny



SENTA
Tamara Wilson



ERIK
Robert Watson



CONDUCTOR
Enrique Mazzola



MARIE
Lisette Oropesa



TONIO
Lawrence Brownlee



CONDUCTOR
Speranza Scappucci



The Daughter of the Regiment

Marty Schell/Metropolitan Opera

Lyric Opera of Chicago's 2023/24 Season will take audiences on a global tour of opera featuring a richly curated slate of musical events in six different languages, and debuts by some of the world's most riveting talents.

"Lyric will present a varied and compelling 2023/24 Season that keeps our main pillars front and center: presenting the best singers in the world, bringing exciting and thought-provoking large-scale productions to the stage, and offering fresh contemporary perspectives that point to the future of our beloved art form," says Anthony Freud, Lyric's General Director, President & CEO.

The company's 69th season opens on Saturday, September 23 with Wagner's ***The Flying Dutchman***, conducted by Music Director Enrique Mazzola, who leads his first Wagner opera at Lyric. Directed by Christopher Alden, the production stars Tomasz Konieczny in the title role, Lyric favorite Tamara Wilson as Senta, and Robert Watson in his Lyric debut as Erik.

The season continues with a pair of operas offering contrasting emotional approaches to experiencing Lyric's signature world-class vocalism. One of opera's most delightful comedies, Donizetti's ***The Daughter of the Regiment***—back on the Lyric stage for the first time in 50 years—features the return of Lawrence Brownlee to Lyric as Tonio and the long-awaited Lyric debut of Lisette Oropesa as Marie. The iconic Laurent Pelly production is revived by Christian R  th and conducted by Speranza Scappucci, both in their Lyric debuts.

In repertory with the lighthearted Donizetti is one of opera's most intense dramas, Jan  cek's ***Jenůfa***, starring two of the world's most sensational sopranos: Lise Davidsen in the title role for her Lyric debut and Nina Stemme in her return to Lyric as the Kostelni ka, Jenufa's stepmother. The production is conducted by Jakub Hrůša, the celebrated music director designate of London's Royal Opera House



JENůFA
Lise Davidsen



KOSTELNI KA
Nina Stemme



CONDUCTOR
Jakub Hrůša



Jenůfa

Tristram Kenton/Royal Opera House



ANGELINA
Vasilisa
Berzhanskaya



RAMIRO
Jack Swanson



DON MAGNIFICO
Alessandro
Corbelli



DANDINI
Joshua Hopkins



CONDUCTOR
Yi-Chen Lin



Champion

Scott Suchman/Washington National Opera



EMILE GRIFFITH
Eric Owens



**YOUNG EMILE
GRIFFITH**
Justin Austin



EMELDA GRIFFITH
Whitney Morrison

and one of the world’s foremost experts in the Czech repertoire, and is directed by Claus Guth, both in their Lyric debuts.

Winter brings another diverse pairing of operas to the Lyric stage. The witty and heartwarming comedy of Rossini’s *Cinderella* features the Lyric debuts of Vasilisa Berzhanskaya as Angelina and Jack Swanson as Ramiro,



Cinderella

Cory Weaver/San Francisco Opera

alongside returning favorites Alessandro Corbelli as Don Magnifico and Joshua Hopkins as Dandini. Conductor Yi-Chen Lin makes her Lyric debut, and the classic production of Jean-Pierre Ponnelle is revived by Crystal Manich, also in her Lyric debut.

In repertory with *Cinderella* is *Champion*, the “opera in jazz” by composer Terence Blanchard (who composed last season’s hit *Fire Shut Up in My Bones*) and librettist Michael Cristofer. *Champion* tells the true story of Emile Griffith, a professional boxer from the U.S. Virgin Islands who threw a fatal punch in the boxing ring in 1962 after being taunted for his sexuality by his rival. Eric Owens is the older Emile, Justin Austin is Young Emile, and Whitney Morrison, an alumna of Lyric’s Patrick G. and Shirley W. Ryan Opera Center artist-development program, co-stars as Emelda Griffith, Emile’s mother. Music Director Enrique Mazzola conducts his first contemporary opera at Lyric, and James Robinson directs this new Lyric coproduction with the Metropolitan Opera, where it recently opened to rave reviews.



AIDA
Michelle Bradley



AMNERIS
Jamie Barton



RADAMES
Russell Thomas

The season continues with Verdi’s majestically scaled but intimate love story **Aida**, conducted by Music Director Enrique Mazzola. Michelle Bradley and Russell Thomas, the star-crossed lovers of last season’s *Tosca*, reunite as Aida and Radamès, another of opera’s famously doomed couples. *Aida* also heralds the return to Lyric of Jamie Barton as Amneris. The production, directed by Francesca Zambello, has designs by the contemporary visual artist RETNA, whose work uses calligraphy, hieroglyphics, and bold colors to evoke a mythic past with a contemporary edge. RETNA’s mural work can be seen locally in Chicago on the south wall of 33 East Congress, part of the Wabash Arts Corridor. *Aida* also features the Lyric debut of renowned modern dance choreographer Jessica Lang.

Within his run of *Aida* performances, Music Director Enrique Mazzola also leads two special performances of **Mozart’s Requiem**, a beloved masterpiece that puts the Lyric Opera Chorus and Orchestra center stage. The soloists for these performances will be announced in the coming months.

To commemorate the 2023/24 Season, musical theater’s biggest star will headline Lyric’s Season Opening Gala: **An Evening with Audra McDonald** on Friday, October 6. Andy Einhorn conducts the Lyric Opera Orchestra in an evening celebrating McDonald’s unique interpretive talents in a variety of song styles.

“I am excited to be conducting such a profoundly diverse repertoire at Lyric next season: Wagner, Verdi, Mozart, and the brilliant Terence Blanchard, whose opera *Champion* is part of Lyric’s ongoing commitment to new works,” says Mazzola. “Stay tuned for more details about the other new and recent operas Lyric will be commissioning and producing across future seasons. This is constant, essential work for the company and includes important pieces like **Omar** by Rhiannon Giddens and Michael Abels, **The Listeners** and **Proving Up** by Missy Mazzoli and Royce Vavrek, and the world premieres of the Lyric commissions of **Safronia** by avery r. young and **H of H Playbook** by Bryce Dessner and Anne Carson. Lyric is committed to remaining at the center of exploration and innovation in opera for many years to come.”

Behind the scenes, Lyric’s work continues year-round, as the new Ryan Opera Center Ensemble begins its work, the new season’s sets arrive for extensive technical



Aida

Scott Suchman/Washington National Opera

rehearsals, the costume artisans prepare all the wardrobe for the new season’s singers, the Orchestra and Chorus review the new season’s musical scores, and workshops are held for the new operas in development.

“We are keeping our carefully built pipelines strong—both in terms of the artists we continue to mentor in our recently expanded Ryan Opera Center, and the new operas by new creators we continue to commission, workshop, and produce,” explains Freud. “We have a robust 2023/24 Season ahead, and artistic excellence will continue to be Lyric’s guiding principle.” **■**

Lyric Opera of Chicago’s 2023/24 Season is on sale now, with more than a dozen curated packages and “create your own” package options that allow you to customize every detail. Explore the season at lyricopera.org/subscribe.



Allison Michael Orenstein

Audra McDonald will perform at Lyric’s Season Opening Gala on Friday, October 6, 2023 at 7:30 PM.

Concerts tickets go on sale on June 15 at lyricopera.org/audra



You don't need to be a world-class composer to help orchestrate a better future



Help power your portfolio with
the innovators of the Nasdaq-100

Invesco QQQ is the proud sponsor of Lyric Opera of
Chicago's 2022/23 Season

Not FDIC Insured May Lose Value Not Guaranteed by the Bank

There are risks involved with investing in ETFs, including possible loss of money. ETFs are subject to risks similar to those of stocks. Investments in the technology sector are subject to greater risk and are more greatly impacted by market volatility than diversified investments.

The Nasdaq-100 Index comprises the 100 largest non-financial companies traded on the Nasdaq. An investment cannot be made directly into an index.

Before investing, consider the Fund's investment objectives, risks, charges and expenses. Visit [invesco.com](https://www.invesco.com) for a prospectus containing this information. Read it carefully before investing.

Invesco Distributors, Inc.

Lyric

West Side Story

Lyric's larger-than-life production of West Side Story took Chicago by storm when it premiered and now returns with a stellar cast backed by the lush sound of the Lyric Orchestra playing the original orchestrations. Leonard Bernstein's music and Stephen Sondheim's lyrics once again transplant Romeo and Juliet to the streets of New York City in this timeless Broadway musical masterpiece.

Add to that the bold, iconic choreography of Jerome Robbins, smoldering and sizzling with energy, and you have an extraordinary musical theater experience you'll never forget.



West Side Story

Todd Rosenberg

West Side Story

Based on a conception of **Jerome Robbins**

Book by **Arthur Laurents** | Music by **Leonard Bernstein** |

Lyrics by **Stephen Sondheim**

Original Production Directed and Choreographed by **Jerome Robbins**

Originally Produced on Broadway by Robert E. Griffith and Harold S. Prince

By Arrangement with Roger L. Stevens

CAST OF CHARACTERS

Tony
Maria
Anita

The Jets

Riff
Action
A-Rab
Baby John
Big Deal
Diesel
Snowboy
Gee-Tar
Tiger

Jet Girls

Graziella
Velma
Minnie
Clarice
Pauline
Anybodys

Ryan McCartan⁺
Kanisha Feliciano⁺
Amanda Castro

Brett Thiele
Nathan Keen⁺
Kyle Coffman⁺
Maurice Dawkins⁺
Matthew Aaron Liotine⁺
Thomas Sutter⁺
Steven Blandino⁺
Michael Francis McBride
Michael Olaribigbe⁺

Laura Savage
Paige Fraser
Whitney Cooper⁺
Morgan McDaniel
Julia Fleckenstein⁺
Ayden Pratt⁺

The Sharks

Bernardo
Chino
Pepe
Indio
Luis
Anxious
Nibbles
Juano
Toro

Shark Girls

Rosalia
Consuelo
Francisca
Teresita
Estella
Margarita

The Adults

Doc
Lt. Schrank
Officer Krupke
Glad Hand

Yurel Echezarreta⁺
Mark Daniel Aguirre⁺
Joseph A. Hernandez
Jorge Guerra⁺
Alex Aponte⁺
Dean De Luna⁺
Andres Acosta⁺
Martin Ortiz Tapia
Henry Julián Gendron⁺

Joy Del Valle⁺
Orianna Hilliard⁺
Abigail Paschke⁺
Natalia Nieves-Melchor⁺
Kiana Rodriguez⁺
Monica Garcia Bradley⁺

Genevieve VenJohnson⁺
Keith Kupferer⁺
John Lister
Lillian Castillo⁺

Ensemble: Geoffrey Agpalo, Hoss Brock, William M. Combs, Desiree Hassler, Marie Sokolova, Vince Wallace, Corinne Wallace-Crane, Nicholas Ward, Ron Watkins, Nikolas Wenzel, Tara Wheeler, Michelle K. Wright

Understudies: Jeffrey Kringer – *Tony*; Joy Del Valle – *Maria*; Orianna Hilliard – *Anita*; Kyle Coffman – *Riff*; Josh Zacher – *Action*; Steven Blandino – *A-Rab*; Michael Francis McBride – *Baby John*; Jorge Guerra – *Bernardo*; Alex Aponte – *Chino*; Whitney Cooper – *Graziella*; Julia Fleckenstein – *Anybodys*; Abigail Paschke – *Rosalia*; John Lister – *Lt. Schrank*; Alexis Roston – *Doc, Glad Hand*; Nikolas Wenzel – *Officer Krupke*

Swings: Amy Romero⁺, Josh Zacher⁺

First performed at the Winter Garden Theatre, New York, on September 26, 1957.
First performed by Lyric Opera of Chicago on May 3, 2019.

Lyric

Conductor
 Director
 Set Designer
 Costume Designer
 Lighting Designer
 Sound Designer
 Chorus Master
 Choreographer
 Original Choreography
 Reproduced by
 Associate Choreographer
 Dance Captain
 Wigmaster &
 Makeup Designer
 Associate Stage Director
 Assistant Stage Director
 Stage Manager
 Assistant Stage Managers

Musical Preparation

Fight Director
 Diction and Dialect Coach
 Sound Mixing Engineer

James Lowe
Francesca Zambello
Peter J. Davison
Jessica Jahn
Mark McCullough
Mark Grey
Michael Black
Jerome Robbins

Joshua Bergasse⁺
Kiira Schmidt Carper⁺
Whitney Cooper⁺
Sarah Hatten

Eric Sean Fogel
Jordan Lee Braun
Alaina Barkowiak
Katrina Bachus
Bill Walters
William C. Billingham
Jerad Mosbey
Brett Rowe
Chuck Coyl
Sammi Grant
Stephanie Farina

⁺ Lyric debut

PRODUCTION SPONSORS

Lead Sponsor: The Negaunee Foundation
The Davee Foundation
Bank of America

West Side Story is presented through special arrangements with Music Theatre International (MTI). All authorized performance materials are also supplied by MTI. (mtishows.com)

West Side Story is a coproduction of Lyric Opera of Chicago, Houston Grand Opera, and Glimmerglass Festival.

New York principal casting by Tara Rubin Casting, Merri Sugarman, CSA.
 Chicago principal casting by Becca McCracken, CSA.

Lyric Opera of Chicago thanks its Official Airline, American Airlines.



The Lyric Opera wishes to thank St. Louis Music for use of the P. Mauriat bass saxophone played in this performance.

Lyric Opera of Chicago wishes to thank its preferred physical therapy provider, Athletico.

The videotaping or other video or audio recording of this production is strictly prohibited.

APPROXIMATE TIMINGS

| | |
|---------------------|---------------------|
| Act 1 | 1 hour 20 minutes |
| Intermission | 25 minutes |
| Act 2 | 45 minutes |
| Total | 2 hours, 30 minutes |

ORCHESTRA

Violin I

Bing Jing Yu, *concertmaster*
 Kathleen Brauer
 Alexander Belavsky
 Injoo Choi
 Irene Radetzky
 Rika Seko
 Sheila Hanford

Violin II

John Macfarlane, *principal*
 Diane Duraffourg-Robinson
 John D. Robinson
 Ann Palen
 David Volfe

Cello

Mark Brandfonbrener, *principal*
 Walter Preucil
 Paula Kosower
 Mara McClain
 Robyn Neidhold

String Bass

Andrew L. W. Anderson,
Principal

Flute/ Piccolo

Marie Tachouet
 Dionne Jackson
 Scott Metlicka

Oboe/ English Horn

Paul Lueders

Clarinet

Trevor O’Riordan, *principal*
 Theresa Zick, *clarinet/e flat clarinet*
 Danny Mui, *clarinet/bass clarinet*

Sax/Bass Clarinet

Steven Leinheiser, *alto sax/bass clarinet*
 Scott Burns, *tenor sax/bari sax/bass clarinet*
 Jim Gailloro, *soprano sax/bass sax*

Bassoon

Hanna Sterba, *principal*

Horn

Neil Kimel, *principal*
 Robert E. Johnson

Trumpet

William Denton, *principal*
 Rob Parton
 Eric Krumich

Trombone

Mark Fisher, *principal*
 Jeremy Moeller, *bass trombone*

Percussion

Edward Harrison, *timpani/ percussion*
 Douglas Waddell
 Michael Kozakis
 Jeff Handley
 Tom Hipskind, *drum set/ percussion*

Piano/Celeste

Jo Ann Daugherty, *principal*

Guitar/Electric Guitar/ Mandolin

Tom Logan

Orchestra Contractor

Christine Janicki

Musical Numbers

ACT ONE

Prologue Orchestra (danced by Jets and Sharks)
 The Jet Song Riff and Jets
 Something's Coming Tony
 Dance at the Gym Jets and Sharks
 Maria Tony
 Tonight Maria and Tony
 America Anita, Rosalia, and Shark Girls
 Cool Riff and Jets
 One Hand, One Heart Maria and Tony
 Tonight Quintet Maria, Anita, Tony, Riff, Bernardo, Jets, and Sharks
 The Rumble Orchestra (danced by Riff, Bernardo, Jets, and Sharks)

ACT TWO

I Feel Pretty Maria, Rosalia, Francisca, and Consuelo
 Somewhere Maria (danced by Company)
 Gee, Officer Krupke Action and Jets
 A Boy Like That/I Have a Love Anita and Maria
 Finale Company



Director's note

by Francesca Zambello



"Two households, both alike in dignity..." Thus begins Shakespeare's *Romeo and Juliet*, in which we see "ancient grudge break to new mutiny." When Arthur Laurents first conceived a modern, musical version of the play, he imagined a rivalry between Catholic and Jewish communities on the Lower East Side; only later did he and his collaborators move the story uptown, pitting a gang of native New Yorkers against those more recently arrived.

Although America is a country of immigrants, we continue to struggle with issues around immigration and migration, which makes *West Side Story* as resonant today as it was when it was first written. The musical landed on Broadway in 1957, just as the Civil Rights Movement was gaining steam and we were collectively examining some of the divisions in our country. In many ways, we have moved forward since that time. But even in the time from the debut

of this production (2018) until now, I feel I've witnessed the growth of hatred in our country. There are laws in place against certain kinds of discrimination, but especially with the rise of social media, I'm concerned that we are becoming more, not less, inclined to think in terms of "us" vs. "them." The story of two warring gangs challenges all of us to look at how we define and marginalize "the other." Perhaps we find it easy to engage with people of different cultural backgrounds. But what about differences in education? Politics? Religion? Economic means? Gender and sexuality?

The clash of cultures has been exacerbated by the increasing accessibility of firearms in this country, which has resulted in the deaths of not only those who take it upon themselves to represent and defend a particular group, but countless innocents caught in the crossfire. The original creative team's vision of America is hardly a utopian one, but they surely never imagined a landscape like today's, in which mass shootings are a regular occurrence in every kind of community, from urban nightclubs to suburban schoolyards.

The presence of a gun in the final moments of *West Side Story* drastically changes the dynamic in a way that is immediately recognizable. Maria's final speech is almost unbearable to witness, in part because it is so easy to understand her state of mind. *"How do you fire this gun, Chino? Just by pulling this little trigger? How many bullets are left, Chino? Enough for you? ...and you? All of you? We all killed him; And my brother and Riff. I, too. I CAN KILL NOW, BECAUSE I HATE NOW."*

It troubles me that we seem to have accepted an us/them view of society, just as we seem to have accepted the presence of guns in our communities. This scene in *West Side Story* holds up a mirror to the devastating path we are on. What will finally allow us to muster the collective will to change our course?

Leonard Bernstein scrawled "an out and out plea for racial tolerance" across the first page of his copy of *Romeo and Juliet*. As we approach this piece once again, I hope we can make that plea reverberate in a new way. **L**

Making difference

West Side Story's paints an enduring, if sometimes problematic, picture of the dangers of division.

by Carla Della Gatta



Above: Rita Moreno as Anita in the 1961 film version of *West Side Story*.
Right: Chita Rivera originated the role of Anita on Broadway in 1957.



***West Side Story* was never going to be about** New York's West Side. It was never intended to be a sociological depiction of Puerto Ricans—or of any group. Originally conceived as a musicalized *Romeo and Juliet* story adapted to Jews and Catholics on the Upper East Side at Passover/Easter, in the hands of Arthur Laurents and Jerome Robbins the division eventually came to be between juvenile gangs. Jewish theatre-makers and songwriters of the time rarely staged Jewish stories for wider audiences, and here the creators took on the acculturated, but not assimilated, status of Jews and transposed it to a more recent group that had migrated to the mainland United States: Puerto Ricans.

One reason for the shift was that the creators felt it was too soon after World War II to show Jews being killed on stage. (Although *West Side Story* premiered in 1957, its inception had begun years earlier.) Laurents was no

stranger to switching one “Other” for another. His first play, *Home of the Brave* (1945), depicts a Jew as a member of an American platoon during World War II. When it was adapted to the screen four years later, the Jewish male character was replaced by a Black male character in order to be more relevant to shifting politics. From the very outset, then, real contemporary concerns played into decisions for creating the theatrical work, even in a genre where characters periodically break out into song and dance.

The very specificity of *West Side Story's* time and place, held in ambivalent tension with its omniform origins, is part of what makes it enduringly controversial. The work shows that difference can be deadly, and shifting the divide to the Sharks and Jets can come at a cost. Paradoxically, the layers of transposition—from Jews and Catholics to the Sharks and the Jets, from tragedy to musical theatre, from Shakespeare's famous verse and



Amanda Castro, Mikaela Bennett, Julio Rey, and Manuel Stark Santos in Lyric Opera's 2018/19 *West Side Story*.

prose to choreography, music, and lyrics now almost just as famous—are also what make the show enduringly theatrical.

And ultimately, *West Side Story* reveals that amplifying differences requires a kind of diminishment, often affecting marginalized groups. Theatricality always involves exaggeration, and the Latinx body onstage may not be immediately recognizable if it deviates from established generalizations.

Tony and Maria do not immediately register the differences that are so crucial to their familial ties. Whether those ties are biological (Maria and Bernardo are siblings) or fraternal (Tony and Riff are old friends), deviating from the group brings either a metaphorical or literal death.

Two characters most powerfully exemplify the ostracization that results from the dissolution of strong familial ties: Anita and Chino. The role of Anita has often been ethnicized and racialized in casting; Chita Rivera, who initiated the role on Broadway, and Rita Moreno in the 1961 film were the only Latinas in their respective casts. Anita has captivated audiences from *West Side Story*'s first run and proved an award-winning role for most of the actresses who have played her. African American actress Debbie Allen played the role in the 1980 Broadway revival, followed by Afro-Latinas Karen Olivo in the 2009 bilingual Broadway revival and

Ariana DeBose in the 2021 film. After Anita argues with Maria, she goes to Doc's store for Maria's sake, but the Jets assault her and she exits both the store and the play, leaving her narrative without resolution. Anita's disappearance signals a loss of hope, and all the music goes out with her.

If Anita's departure signals a loss of hope, it is the role of Chino that solidifies that loss. Adapted from Shakespeare's character of Paris, who dies inadvertently by Romeo's hand when they both arrive at the Capulet tomb to mourn their love, Chino is the character most strikingly changed from the source text, and with greater implications for representations of Latinx men. Similar to Paris, Chino has few lines yet more stage presence due to his assimilation into gang culture; he is a character who represents the old world, Maria's intended, and whose masculinity makes him apprehensive to enter the bridal shop. Unlike Paris who hurts no one, Chino becomes the agent of death, killing Tony (Romeo) in cold blood, and most likely going to jail for the rest of his life for it. Chino's carceral death is the death of the American Dream for citizens who are nevertheless considered outsiders and mistreated by society.

***West Side Story* was the first** adaptation of a Shakespearean tragedy on Broadway, and it fostered a creative strategy that I refer to as "the *West Side Story* effect," the changing of any difference in Shakespeare—

**Manuel Stark Santos as Bernardo
and Amanda Castro as Anita
in Lyric Opera's 2018/19 *West Side Story*.**

familial, national, generational, and so on—into cultural-linguistic difference. Today, adapting Shakespeare to another setting is almost a cultural meme. Concept productions, musicalized adaptations, and reinventions of his works are commonplace. In an unusual pattern of influence, *West Side Story* has mapped back onto Shakespearean storytelling, with this type of division now nearly requisite in Shakespearean productions. Vocal and acting methods for performing Shakespeare are essential to actor training; in fact, speaking Shakespearean verse has been a litmus test for actors since his time. Likewise, *West Side Story*'s requirement for “triple threat” performers—those who can sing, act, and dance—became the litmus test for excellence in musical theater.

West Side Story was the first Broadway musical to have two dead bodies onstage at the curtain drop before intermission, making the realities of gang warfare the climactic moment. *West Side Story* is a “book musical,” a musical in which characters break out into song to express intense emotions, but its varied musical styles and absence of musical numbers in the last portion of the story also push on that very definition; indeed, it is the rare musical that does not end with a song and dance number. The book musical is an American invention, beginning with *Oklahoma!* almost fifteen years earlier, and it is *West Side Story*'s film soundtrack that would take the story worldwide. The creative team—inclusive of Laurents, Robbins, Leonard Bernstein and a then-unknown Stephen Sondheim—brought forward a new style of storytelling, not in form but in creative power. *West Side Story* has itself been adapted and translated to cultures and languages all over the world, and to various performance genres, from a late 1990s GAP marketing campaign to opera.

One of *West Side Story*'s enduring appeals is that it satisfies the modern desire for subtext. The first “Method” musical, the unexplained familial grudge from Shakespeare's play is made explicit and based on division caused by societal status, immigration, ethnicity, and language. Although the Sharks spoke a minimal amount of Spanish in the initial production and 1961 film, the theatrical premise of linguistic division was made prominent in the 2009 Broadway revival and the 2021 film, both of which included portions entirely in Spanish without translation. Linguistic racism is just as prevalent as other forms of racism, and unfortunately *West Side Story*'s continued relevance rests on its connection to today's politics as much as those of the past.

Typically applied to casting practices, the phrase “representation matters” has become ubiquitous. But not all representation advances understanding and empathy;



Todd Rosenberg

it can be as dangerous and misinformed as it can be productive and inclusive. *West Side Story* reminds us that authenticity *can* be compatible with high theatricality, and it is this ambivalence that makes the show so moving, entertaining, and in certain moments, realistic. *West Side Story*'s ethnic division and somber ending are the most authentic thing about it. The resolution that *Romeo and Juliet* suggests from the outset—that the lovers' actions will “bury their parents' strife”—is not possible when prejudice divides the two households. Unlike many musicals, plays, and other stories which come together quickly for closure, *West Side Story*'s high point of realism is its ending, with Maria's admission that her pain will now cause pain to others: “Now I hate too.” Neither Maria or Tony has Juliet or Romeo's death wish, and Maria survives. Her life ahead will be filled with trauma and with the absence of her loved ones.

Dr. Carla Della Gatta is Assistant Professor of English at Florida State University. She is the author most recently of Latinx Shakespeares: Staging US Intracultural Theater (University of Michigan Press). **L**

Artist profiles

CREATORS



ARTHUR LAURENTS | LIBRETTIST

Laurents was for more than half a century one of America's most distinguished figures in the arts. He moved in the theater between writing to directing, while also scoring great successes as a Hollywood screenwriter. Laurents began his career writing for radio, prior to the production of his first Broadway play, *Home of the Brave* (1945). Other plays included *A Clearing in the Woods* (1957) and *Invitation to a March* (1960). Laurents's association with composer/lyricist Stephen Sondheim includes, in addition to *West Side Story*, the musicals *Gypsy* (book), *Anyone Can Whistle* (direction, book), and *Do I Hear a Waltz?* (book). He also directed several other Broadway musicals, including *I Can Get It for You Wholesale* in 1962, *La Cage aux Folles* in 1983 (for which he won a Tony Award), the 2008 revival of *Gypsy*, and the 2009 bilingual revival of *West Side Story*. Among his screenwriting credits are *Rope* (for Alfred Hitchcock), *Anastasia*, *Bonjour Tristesse*, *The Way We Were*, and *The Turning Point*. He wrote two memoirs, *Original Story* by Arthur Laurents and *The Rest of the Story*. He died in 2011.



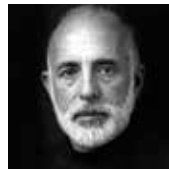
LEONARD BERNSTEIN | COMPOSER

Bernstein transformed the way Americans and people everywhere hear and appreciate music. Bernstein's successes as a composer ranged from Broadway (*West Side Story*, *On the Town*, *Wonderful Town*, *Candide*) to major concert works, such as his three symphonies—subtitled *Jeremiah* (1944), *The Age of Anxiety* (1949), and *Kaddish* (1963)—and *Serenade* for violin, strings and percussion (1954); *Chichester Psalms* (1965); *Mass: A Theater Piece for Singers, Players and Dancers* (1971); *Songfest* (1977); *Concerto for Orchestra: Jubilee Games* (1989); and *Arias and Barcarolles* (1988). Bernstein also composed two operas, *Trouble in Tahiti* (1952) and *A Quiet Place* (1983), and three ballets, *Fancy Free* (1944), *Facsimile* (1946), and *Dybbuk* (1975). He received an Oscar nomination for the score of *On the Waterfront* (1954). Bernstein conducted the world's greatest orchestras for almost half a century. He enjoyed special relationships with the New York Philharmonic (music director, 1958-69, thereafter permanent laureate conductor), the Israel Philharmonic, and the Vienna Philharmonic. Among Bernstein's many honors were the American Academy of Arts and Letters' Gold Medal, a Kennedy Center Honor, 11 Emmy Awards, a special Tony Award, a Lifetime Achievement Grammy Award, and the Japan Art Association's Praemium Imperiale. Bernstein died in 1990.



STEPHEN SONDHEIM | LYRICIST

Sondheim wrote the music and lyrics for *A Funny Thing Happened on the Way to the Forum*, *Anyone Can Whistle*, *Company*, *Follies*, *A Little Night Music*, *Sweeney Todd*, *The Frogs*, *Pacific Overtures*, *Merrily We Roll Along*, *Sunday in the Park with George*, *Into the Woods*, *Assassins*, *Passion*, and *Road Show*, as well as lyrics for *West Side Story*, *Gypsy*, *Do I Hear a Waltz?*, and additional lyrics for *Candide*. Anthologies of his work as composer and lyricist include *Side by Side by Sondheim*, *Marry Me a Little*, *You're Gonna Love Tomorrow*, *Putting It Together*, and *Moving On*. He composed film scores for *Stavisky* and *Reds*, and songs for *Dick Tracy* (Academy Award). Sondheim won six Tony Awards for best score for a musical, and eight of his shows won the New York Drama Critics Circle Award. *Sunday in the Park with George* received the Pulitzer Prize for Drama in 1985. Sondheim was elected to the American Academy of Arts and Letters in 1983. In 1990 he was the first Visiting Professor of Contemporary Theatre at Oxford University. He received a Kennedy Center Honor and the Praemium Imperiale, Japan's highest honor, for a lifetime of artistic achievement. Sondheim died in 2021.



JEROME ROBBINS | ORIGINAL DIRECTOR AND CHOREOGRAPHER

Robbins began his career as a dancer, winning particular praise as a soloist at Ballet Theatre (later known as American Ballet Theatre). Once he ended his performing career, he achieved world renown as a choreographer of ballets, as well as for directing and choreographing in theater, movies, and television. His Broadway shows included *On the Town*, *Billion Dollar Baby*, *High Button Shoes*, *West Side Story*, *The King and I*, *Gypsy*, *Peter Pan*, *Miss Liberty*, *Call Me Madam*, and *Fiddler on the Roof*. His last Broadway production, *Jerome Robbins' Broadway* (1989), won six Tony Awards, including best musical and best director. Among Robbins's more than 60 ballets are *Fancy Free*, *Afternoon of a Faun*, *The Concert*, *Dances At a Gathering*, *Other Dances*, *Glass Pieces*, and *Ives, Songs*, which are in the repertoires of New York City Ballet and other major companies worldwide. Robbins received two Academy Awards, four Tony Awards, five Donaldson Awards, an Emmy Award, the Screen Directors' Guild Award, and the New York Drama Critics Circle Award. He was a 1981 Kennedy Center Honors recipient and was awarded the French Chevalier dans l'Ordre National de la Legion d'Honneur. Robbins died in 1998.

PRINCIPALS**RYAN McCARTAN | TONY**
Lyric debut

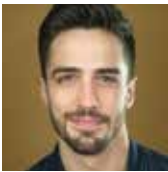
McCartan has most recently had a recurring role on The CW network's *The Winchesters*. He has appeared on Broadway in Disney's *Frozen*, playing Hans; and played the male lead of Fiyero in Broadway's *Wicked*. He originated the role of J.D. in *Heathers: The Musical Off-Broadway*. McCartan played Brad Majors, leading Fox's *The Rocky Horror Picture Show* alongside Laverne Cox and Victoria Justice; and is known for his role "Diggle," on Disney Channel's *Liv and Maddie* over its four season run. He had recurring arcs on USA Network's *Royal Pains*, NBC's *Midnight, Texas*, and Hulu's *Freakish*.

**KANISHA FELICIANO | MARIA**
Lyric debut

Feliciano recently originated the role of Ann/Judith in *Flying Over Sunset* at Lincoln Center. She was in the closing cast of *Phantom of the Opera* on Broadway as a Christine understudy. Other credits include Lily from *The Secret Garden* at Music Circus in Sacramento, along with operatic roles such as Susanna/*Le Nozze di Figaro* (Shepherd School of Music), Baby Doe/*The Ballad of Baby Doe* (Moore's Opera Center), and Blonde/*Die Entführung aus dem Serail* and Amy March/*Little Women* (both Opera in the Ozarks)

**AMANDA CASTRO | ANITA**
Previously at Lyric: Anita/*West Side Story* (2018/19).

This season, Castro has been seen at New York City Center with Ayodele Casel, at Joe's Pub with her all-female percussive trio Soles of Duende, and as Anita in *West Side Story* at Teatro Lirico di Cagliari, Italy. She has also appeared as Anita at Atlanta Opera and The Glimmerglass Festival, and in Lyric's 2020/21 Season she appeared as a vocalist in *The New Classics: Songs from the New Golden Age of Musical Theater*. Castro appeared as Kathy Seldon/*Singing in the Rain* (Olney Theatre), as Lorraine/*42nd Street* (Ordway Center for Performing Arts), and Consuelo/*West Side Story* (Lyric Opera Kansas City, Houston Grand Opera), and has appeared widely in the U.S. and abroad. She was a principal dancer of the Brooklyn-based company Urban Bush Women for four years, and was dance captain at the Geva Theater (Rochester, NY) for *In the Heights*.

**BRETT THIELE | RIFF**
Previously at Lyric: Riff/*West Side Story* (2018/19).

Thiele has appeared in multiple Broadway productions including *Miss Saigon*, *Escape to Margaritaville*, and *Spiderman: Turn Off the Dark*. A native of New Orleans, Thiele has appeared Off-Broadway in *Clueless*, *The*

Musical at the New Group. Regionally, he has appeared as Tulsa/*Gypsy* at the Maltz Jupiter Theatre, in *The First Wives Club* at the Oriental Theatre in Chicago, *Follies* at the Repertory Theatre of St. Louis, and as Dakin/*The History Boys* at the Uptown Players in Dallas. He has also appeared as Riff with the St. Petersburg Opera Company and as Action at the Asolo Theatre in Florida.

**YUREL ECHEZARRETA | BERNARDO**
Lyric debut

Echezarreta has appeared in numerous Broadway productions, including *West Side Story*, *La Cage Aux Folles*, *Matilda*, *Aladdin*, *Head Over Heels*, and, most recently, *Moulin Rouge the Musical*. He appeared in Steven Spielberg's *West Side Story* film and in the independent feature *The Last Five Years* with Anna Kendrick. Television credits include *Barry* on HBO, *Alternatino* on Comedy Central, and *Odd Mom Out* on Bravo. Regional credits include Pasadena Playhouse's production of *Head Over Heels*, the Hollywood Bowl's *Kinky Boots*, and many others.

THE JETS**NATHAN KEEN | ACTION**
Lyric debut

Keen has been seen on Broadway in *Les Miserables* (Gavroche) and *Hello, Dolly!* (Swing, Ensemble). His many touring credits include *Hello, Dolly!* (Swing, Assistant Dance Captain), *Finding Neverland* (Ensemble), *West Side Story* (50th Anniversary International Tour; Jet Swing), *Chicago* (Swing), *We Will Rock You* (Ensemble), *West Side Story* (Big Deal, Fight Captain, u/s Action, u/s Riff). Regional appearances include *A Christmas Carol* (Repertory Theatre St Louis), *The Cher Show* (Ogunquit Playhouse), and *Radio City Spring Spectacular!*.

**STEVEN BLANDINO | SNOWBOY, u/s A-RAB**
Lyric debut

Blandino is currently an Adjunct Professor at Pace Commercial Dance & Musical Theater, as well as on Faculty at Steps on Broadway, Broadway Dance Center, Peridance Center, and elsewhere. Recent performance credits include *West Side Story* in Italy, *CATS* (national tour), *West Side Story* (Houston Grand Opera), *Newsies*, *Mr. Saturday Night* (workshop), The Glimmerglass Festival, Dance Lab NY, *Funny Girl* (workshop), *Mamma Mia!*, Phish NYE at Madison Square Garden, *Shrek: the Musical*, and *Titanique: Off Broadway* (workshop). Blandino was recently selected as the 2023 Dance Lab New York Choreographer mentored by Ellenore Scott, curated by Josh Prince. He choreographed Ludo's *Broken Bride* at the New York Musical Festival and was a 2020 Capezio ACE Award Finalist in Los Angeles. Blandino is the founder and director of treadFAST commercial dance company.

**KYLE COFFMAN | A-RAB, u/s RIFF****Lyric debut**

Coffman appeared as Ice in Steven Spielberg's *West Side Story* film, and will be seen as Raymar in *Raymar* (upcoming), Brooks in *Classmates* (post-production), Bradley Cooper's *Maestro* (upcoming), Jacob Sutton's *Desert Heart* (short), and Dakin in *Someday This Pain Will Be Useful...* On Broadway he appeared in the original cast of *Newsies* (Henry), the 2009 revival cast of *West Side Story* (A-Rab), and the original revival cast of *The Mystery of Edwin Drood* with Chita Rivera and Jessie Mueller. Selected regional performances include *The Artful Dodger* in *Oliver!*, Ethan Kane in *Sex with Strangers*, Tommy Djlal in *The Music Man*, Frank in *Seven Brides for Seven Brothers*, and *Jerome Robbins' Broadway*.

**MAURICE DAWKINS | BABY JOHN****Lyric debut**

Dawkins has been seen in Broadway tours including *The Prom* (ensemble and understudy for Nick) and *CATS* (Coricopat and understudy for Mr. Mistoffelees). Regional and ship credits include *A Chorus Line* (Mike), *Newsies*, *CATS* (Mr. Mistoffelees), *Mamma Mia!*, *South Pacific*, and many more. He is a proud alum of Sarah Lawrence College and LaGuardia High School.

**MATTHEW AARON LIOTINE | BIG DEAL****Lyric debut**

Liotine most recently danced in *Lohengrin* at the Metropolitan Opera. Past credits include Greg on The National Tour of *A Chorus Line*, and performances at The Muni, The Rev, Pennsylvania Shakespeare Festival, The Riverside Theatre in Vero Beach, Florida, and the Royal Caribbean line. Liotine holds his BFA in Musical Theater from Montclair State where he was the dance captain for *42nd Street*. A New York City native, Liotine attended LaGuardia High School for the Arts and the Performing Arts where he graduated as the institution's first double major, majoring in Dance and Vocal Performance.

**MICHAEL FRANCIS MCBRIDE | GEE-TAR, u/s BABY JOHN**

Previously at Lyric: *Dancer/Fiddler on the Roof* (2022/23) and *Dancer/Florencia en el Amazonas* (2021/22).

McBride graduated *magna cum laude* from the Ailey/Fordham Bachelor of Fine Arts Program in 2010 after joining the Alvin Ailey American Dance Theater in 2009 under the direction of Judith Jamison. In his tenure with the Ailey Company (2009 to 2019), Michael performed over 65 ballets by choreographers such as Alvin Ailey, Ronald K. Brown, Garth Fagan, George Faison,

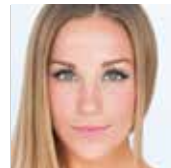
Geoffrey Holder, Bill T. Jones, Jiri Kylián, Wayne McGregor, Ohad Naharin, David Parsons, Paul Taylor, and Twyla Tharp. McBride performed in Santa Fe Opera's production of *A Midsummer Night's Dream* and most recently in Portland Opera's production of *Carmen*. Last summer he was seen as an Angel in Bucks County Playhouse's *Kinky Boots* and as Baby John in Teatro Lirico di Cagliari's production of *West Side Story*.

**MICHAEL OLARIBIGBE | TIGER****Lyric debut**

Olaribigbe's Broadway credits include *True Crime Obsessed* (Ensemble, Helen Hayes). Regional highlights include the world premiere of *The Griswolds Broadway Vacation* (Ensemble, 5th Avenue Theatre), *Kinky Boots* (Angel, The MUNY), *Spamalot* (Ensemble, Ogunquit Playhouse). He appeared in the film *A Jazzman's Blues*.

**THOMAS SUTTER | DIESEL****Lyric debut**

Sutter most recently performed the role of Diesel in Italy at Teatro Lirico di Cagliari. Regional highlights include *Samson et Delilah* (Kennedy Center); *White Christmas* (Westchester Broadway Theatre); *State Fair* (The Rev Theater Co.); *Hot Shoe Shuffle* (The Wick); *Swing!*, *On The Town* (Gateway Playhouse); *West Side Story*, *Mamma Mia*, *Guys and Dolls*, *Man of La Mancha* (Weston Playhouse); and *Music City Christmas* (Nashville Symphony). Film and television credits include *The Marvelous Mrs. Maisel* (Amazon), *Broadway Brightest Lights* (PBS), *Lady in the Lake* (Apple TV), *BTS*, and *So You Think You Can Dance*. Sutter is a 2012 graduate of The Ailey School.

JET GIRLS**WHITNEY COOPER | MINNIE, u/s GRAZIELLA, DANCE CAPTAIN****Lyric debut**

The multi-faceted New York-based artist appeared in national tours of *Hello Dolly!*, *Memphis*, *Flashdance*, and *The Music Man* (Zaneeta). She appeared Off-Broadway in *Trip of Love*, and at Radio City Music Hall for *Christmas Spectacular* and *New York Spectacular*. Regional credits include *Jerome Robbins' Broadway* (Muni), *Carousel* (Louise Bigelow, MTWichita) and *Kiss Me, Kate* (Broadway At Music Circus). Cooper appeared in the feature film *Isn't It Romantic*, on television in *Pretty Little Liars: Original Sin* (HBO), and in the *CIZE* and *Insanity MAX:30* videos with celebrity trainer Shaun T.



**JULIA FLECKENSTEIN | PAULINE,
u/s ANYBODYS**

Lyric debut

Fleckenstein's regional credits include *Cabaret*, *Chicago Sings Broadway Pop*, and *Can-Can* at Porchlight Music Theatre and *Newsies* at Casa Mañana. She holds a BFA in Musical Theater (Dance Emphasis) from the Chicago College of Performing Arts.



PAIGE FRASER | VELMA

Previously at Lyric: *West Side Story* (2018/19).

A graduate of the Ailey/Fordham BFA program, Fraser has danced professionally with Ailey II, Visceral Dance Chicago, and Deeply Rooted Dance Theater, and her commercial dance credits include performances with Beyonce and Chanel Iman. A Princess Grace Award recipient (2016) and one of Dance Magazine's "25 to Watch" (2017), Fraser's other theater credits include *The Lion King* (Rafiki Tour 2019 and Broadway 2021-current), serving as Dance Captain/Swing. She is the Chief Artistic Officer of The Paige Fraser Foundation, and is currently getting her MA in Art Management from University of Denver.



MORGAN MCDANIEL | CLARICE

Previously at Lyric: *Dancer/Carmen* (2022/23).

The dancer graduated from the Ailey/Fordham BFA program, where she worked with esteemed choreographers including Jae Man Joo, Francesca Harper, Elizabeth Roxas-Dobrich, and Tina Bush and performed with the Metropolitan Opera in their production of *Der Fliegende Holländer*. She joined South Chicago Dance Theatre as an emerging artist, and she spent a season with Visceral Dance Chicago. McDaniel had a residency with Ballare Carmel in Monterey, California, where she performed work by Noelle Kayser, Jennifer Archibald, and Ihsan Rustem.



AYDEN PRATT | ANYBODYS

Lyric debut

Pratt appeared in the national tours of *Moulin Rouge! The Musical* (Swing), *Hello, Dolly!* (Ensemble), and *A Chorus Line* (Tricia, China Premiere). They danced for the 2021 Met Gala. Ballet credits include *The Nutcracker*, *Cinderella*, and *Serenade*, and they served as associate choreographer for *Cabaret* (Mac, Haydn Theatre). Pratt has been a trainee with the Rochester City Ballet, and holds a BFA from Montclair State University.



LAURA SAVAGE | GRAZIELLA

Previously at Lyric: *Carousel* (2014/15).

Savage has been seen in dozens of shows in the greater Chicago area. Highlights include Cassie in *A Chorus Line* (Porchlight Theatre), Peggy Sawyer in *42nd Street*, Rumpoleaser in *Cats* (Paramount Theatre), and Dyanne in *Million Dollar Quartet* (Marriott Theatre). She is a Jeff nominated actress (*The Spitfire Grill*, Boho Theatre) and choreographer (*Cruel Intentions* at Kokandy Productions), and appeared on and choreographed for the *Empire* television program (Fox). She will be seen later this season in *Gypsy* at the Marriott Theatre.

THE SHARKS



ANDRES ACOSTA | NIBBLES

Lyric debut

The New York-based actor has toured with *West Side Story* (Bernardo), *Jersey Boys* (Gyp), and *Flashdance* (Joe). Other highlights include Nikos in *Legally Blonde* (Muny), Tommy Devito in *Jersey Boys* (North Shore), Michael in *Smokey Joe's Cafe* (North Shore), Bernardo in *West Side Story* (Asolo Rep), *Evita* (Asolo Rep), *In the Heights* (PCLO), *On Your Feet* (Gateway), and *A Walk On The Moon* (George Street). Acosta holds a BFA from Florida State University.



MARK DANIEL AGUIRRE | CHINO

Lyric debut

Aguirre began his professional acting career fresh out of high school, making his off-Broadway debut in Disney+'s *Trevor: The Musical*. He recently appeared as Bennie in Collard and Rosenblatt's *Like the Wind* at SoHo playhouse. His other credits include the title role in the short *Mikey's Army*, which had its world premiere at the Outfest Fusion QTBIPOC Film Festival in LA earlier this year.



ALEX APONTE | LUIS, u/s CHINO

Lyric debut

Aponte's recent credits include *Kinky Boots* (Angel) and *42nd Street* (Ensemble) at Music Theatre Wichita, and *Seussical* (Mayzie La Bird) at Texas State University. He holds a BFA in Musical Theatre from Texas State University.



DEAN DE LUNA | ANXIOUS

Lyric debut

A graduate of the Boston Conservatory with a BFA in Dance and a minor in Movement Science, de Luna has numerous Broadway and international tour credits. Regional highlights include *My Fair Lady*, *In the Heights* (Philadelphia), *42nd Street*, and *Newsies*.

(St. Louis). He has played numerous roles in *West Side Story* including Anxious (Muny St. Louis), Indio (Riverside Theater, Vero Beach), Chino (Harbor Lights, Staten Island), and Inca (national tour).



**JORGE GUERRA | INDIO,
u/s BERNARDO**

Lyric debut

Guerra has previously performed at Dallas Theater Center, Drury Lane Theatre, Fulton Theatre, Lyric Theatre of OK, Maine State Music Theatre, Maltz Jupiter, Marriott Theatre, Theatre Under the Stars, and ZACH. He is a graduate of Oklahoma City University.



JOSEPH A. HERNANDEZ | PEPE

Previously at Lyric: *Dancer/Florencia en el Amazonas* (2021/22) and *Luis/West Side Story* (2018/19).

The Chicago native began his movement training with Shotokan Karate, and received his formal dance training from Western Michigan University, where he graduated *magna cum laude* with a BFA in Dance. His professional credits include The Metropolitan Opera Ballet, LA Opera, Opera Parallèle, ODC/Dance, Kate Weare Company, Amy Seiwert's Imagery, LED Boise, and River North Dance Chicago, among others. Hernandez's work as a choreographer has been presented at the NYC Blueprint Dance Festival, Trifecta Dance Festival, Midwest RAD Festival, College of DuPage Choreography Showcase and Competition, DanceChance, Hot Crowd Dance, DanceWorks Chicago, COMMON Conservatory, and Western Michigan University.



MARTIN ORTIZ TAPIA | JUANO

Previously at Lyric: *West Side Story* (2018/19).

Tapia spent nearly a decade touring with Giordano Dance Chicago as a company member. He has appeared in productions of *Saturday Night Fever*, *Newsies*, *Cabaret*, *Mary Poppins*, and most recently *A Chorus Line*. He earned a BFA from University of Wisconsin Stevens Point, and has trained also at Luna Negra Dance Theater and Thodos Dance Chicago.



HENRY JULIÁN GENDRON | TORO

Lyric debut

Later this season, Gendron will return to The Muny for *West Side Story* with choreographer Parker Esse. He appeared on Broadway as Bob Fosse in *MJ The Musical* and Off-Broadway in *American!* Other credits include *Outsiders* (Workshop), and *On Your Feet!* (The Muny). Gendron is a graduate of Florida State University.

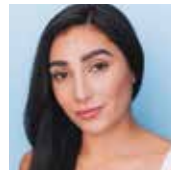
SHARK GIRLS



**MONICA GARCIA BRADLEY |
MARGARITA**

Lyric debut

Bradley's regional credits include *A Chorus Line* (Flat Rock Playhouse), *Oliver!* (Paper Mill Playhouse), *West Side Story* (North Carolina Theatre), *Meet Me in St. Louis* and *CATS* (Theatre Under The Stars), *In the Heights* and *West Side Story* (City Springs Theatre), *Shout! The Mod Musical* (Ivoryton Playhouse), and *She Loves Me* (Millbrook Playhouse). Television credits include the recurring role of Alicia on *Tyler Perry's Sistas* (BET), *The Resident* (FOX), *Dopesick* (Hulu), *She-Hulk* (Disney Marvel Studios), *Macgyver* (CBS), and *Monarch* (FOX). Bradley starred in the Discovery+ feature *A Christmas Open House*, and in indie features *Guys at Parties Like It*, *Abilene*, and others. She is a co-owner of the Vibe City Entertainment production company.



**JOY DEL VALLE | ROSALIA,
u/s MARIA**

Lyric debut

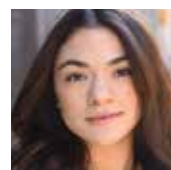
Del Valle appeared on the international tour of *West Side Story* as Rosalia (u/s Maria). Regional highlights include Maria in *West Side Story* (Phoenix Theatre Company), *Cinderella* (Phoenix Theater Company), *Once On This Island* (STONC), *Fiddler on the Roof* (Goodspeed), and *Annie Get Your Gun* (Goodspeed), *Bring it On* (Beck Center), *In The Heights* (Beck Center), and *A Christmas Carol* (Hartford Stage).



**ORIANNA HILLIARD | CONSUELO,
u/s ANITA**

Lyric debut

Hilliard appeared on Broadway in *Aladdin*, and on the national tours of *Aladdin* and *A Chorus Line*. Regional credits include *9to5*, *In The Heights*, *The 25th Annual Putnam County Spelling Bee*, *Legally Blonde*, and *CATS*. She has also appeared aboard the Disney Cruise line, and holds a BS in Electrical Engineering from Santa Clara University.



**NATALIA NIEVES-MELCHOR |
TERESITA**

Lyric debut

Born in Puerto Rico and raised in South Carolina, Nieves-Melchor has appeared in *On Your Feet!* (Westchester Broadway Theatre and MUNY), *Legally Blonde* (MUNY), *Joseph and The Amazing Technicolor Dreamcoat* (MUNY, Swing and Assistant Choreographer), *Cabaret* (Asolo Repertory Theatre, Dance Captain and Associate Choreographer). Television credits include *The Marvelous Mrs. Maisel* (choreographed by Marguerite Derricks) and

The Macy's Thanksgiving Day Parade (directed and choreographed by Willdabeast, Janelle Adams, and Miguel Zarate). She received a BFA in Commercial Dance from Pace University.



ABIGAIL PASCHKE | FRANCISCA, u/s ROSALIA

Lyric debut

Paschke previously appeared in *West Side Story* as Rosalia (The Kennedy Center, Teatro Lirico di Cagliari) and *Maria* (The Carnegie). Recent credits include *Ellie Mae Chipley/Showboat* (The Glimmerglass Festival), *Gossip 2/The Ghosts of Versailles* (Royal Opera of Versailles), *Maria/The Sound of Music* (The Carnegie), *Cinderella/Into the Woods* (Intermountain Opera Bozeman), *Valencienne/The Merry Widow* (Kentucky Opera), and *Sally/Die Fledermaus* (Virginia Opera, Des Moines Metro Opera, Opera Saratoga). Film and television credits include *Alice* in the Emmy Award-nominated *Le Comte Ory* (Des Moines Metro Opera) and *Sandra Gutenberg* in *The Marvelous Mrs. Maisel*. She is an Encouragement Award Winner from The Metropolitan Opera National Council Auditions, a National Semi-Finalist from the Houston Grand Opera Eleanor McCollum Competition, and the Grand Prize winner of the Orpheus Competition, and holds degrees from Carnegie Mellon University and University of Cincinnati College Conservatory of Music.



KIANA RODRIGUEZ | ESTELLA

Lyric debut

Rodriguez was recently seen as *Consuelo* in *West Side Story* at Teatro Lirico Di Cagliari. Regional highlights include *Aida*, *Joseph & the Amazing Technicolor Dreamcoat*, *The Wizard of Oz*, *Mary Poppins*, and *A Christmas Carol*. She toured nationally with *Camille A. Brown & Dancers*, and has workshopped numerous productions including *Oliver!* and *Into The Woods* (NYCC Encores!). Film and television credits include *Blue's Big City Adventure* (Paramount Pictures), *The Marvelous Mrs. Maisel*, and *Macy's Thanksgiving Day Parade*. She holds a BFA in Dance, Musical Theatre Minor from Montclair State University.

ADULTS



GENEVIEVE VENJOHNSON | DOC

Lyric debut

VenJohnson most recently appeared in *Fen* at Court Theatre. Before that, she was featured in August Wilson's *Radio Golf* at Gulfshore Playhouse. Chicago stage work includes productions with Steppenwolf Theater, Broadway in Chicago, Goodman Theatre, Chicago Children's Theatre, House Theater, Chicago Shakespeare, Ravinia Festival, Lifeline Theatre, and the U.S. premieres of contemporary British plays *Hopelessly Devoted* at Piven Theatre and *Dirty Butterfly* with The Blind Owl/Halcyon Theatre. Along with numerous regional appearances,

VenJohnson also appeared in European tours of *Jesus Christ Superstar*. She earned a BFA in Musical Theatre from SUNY Fredonia and an MFA in Acting from FSU/Asolo Conservatory. Television roles include *Power Book IV: Force* (Starz), *Proven Innocent* (Fox), *Chicago Justice* (NBC Universal), and *Low Winter Sun* (AMC).



LILLIAN CASTILLO | GLAD HAND

Lyric debut

Castillo's Chicago credits include *The Comedy of Errors*, *The Taming of the Shrew*, and *Ride the Cyclone* (Chicago Shakespeare); *Hairspray* and *West Side Story* (Drury Lane Theatre); *Mamma Mia!*, *Sister Act*, *She Loves Me*, and *Kiss Me Kate* (Marriott Theatre); *The Music Man* (Goodman Theatre). She appeared Off-Broadway in *Ride the Cyclone* (MCC). Regional highlights include *Why Do Fools Fall in Love*, *The Nerd*, and *Titanic* (Milwaukee Repertory Theater); *Hairspray* (Phoenix Theatre); *Hairspray* and *Glorious!* (Arkansas Repertory Theatre); *Macbeth*, *Fiddler on the Roof*, *Lend Me a Tenor: The Musical*, *School for Wives*, *The Merchant of Venice*, *Private Lives*, and *The Taming of the Shrew* (Utah Shakespeare Festival).



KEITH KUPFERER | LT. SCHRANK

Lyric debut

Kupferer's recent stage credits include *The Seagull* and *The Great Leap* at Steppenwolf Theater; *The Cake* and *Cal in Camo* (Jeff Award for Supporting Actor) at Rivendell Theatre Ensemble, where he is a founding member; *Sweat*, *Support Group for Men* (Jeff nomination for Ensemble), *God of Carnage*, *Passion Play*, and *High Holidays* at the Goodman Theatre; *Murder on the Orient Express* at Drury Lane; *The Mystery of Love and Sex* (Jeff Nomination for Supporting Actor), and *Death of a Streetcar Named Virginia Woolf* at Writer's Theatre; *The Qualms*, *Good People*, and *Middletown*, *Of Mice & Men* also at Steppenwolf Theater; the world premiere of *The Humans* at American Theatre Company; *Hillary and Clinton*, *Never the Sinner*, and *Appropriate* at Victory Gardens Theatre; and *Gypsy* at Chicago Shakespeare Theater. TV credits include *Southside*, *The Big Leap*, *61st Street*, *The Chi*; *Proven Innocent*; *Better Call Saul*; *Empire*; *Chicago P.D.*; *Betrayal*; *Crisis*; *Chicago Fire*; and *Detroit 187*.



JOHN LISTER | OFFICER KRUPKE, u/s LT. SCHRANK

Previously at Lyric: *The King And I* (2015/16) and *Show Boat* (2011/12).

Lister's numerous local credits include *The Crucible* (Steppenwolf Theater); *Guys and Dolls* (Marriott Lincolnshire); seven seasons of *A Christmas Carol* as well as *The Cherry Orchard* and *Roe* (Goodman Theatre); more than a dozen productions including *Richard III*, *Twelfth Night*, *The Herbal Bed*, and *Edward II* (Chicago Shakespeare Theater); *Lady Windermere's*

Fan, Red Herring, Inherit The Wind, and She Stoops To Conquer (Northlight Theatre); and *As You Like It* and *Heartbreak House* (Writers' Theatre). Regional credits include *Around The World In 80 Days* (Indiana Repertory Theatre); *Deathtrap, The Foreigner, and Shady Business* (Peninsula Players); *Romeo and Juliet, Henry V, and The Comedy of Errors* (Notre Dame Summer Shakespeare). Film and television credits include *Chicago Med* and *Chicago Fire* (NBC), *Public Enemies* (Universal), *Prison Break* (FOX), and *The Beast* (A&E).

ENSEMBLE



GEOFFREY AGPALO | ENSEMBLE

The Filipino-American tenor can be heard in the Haymarket Opera world premiere recording of *L'amant anonyme*. Other recent role debuts include Nemorino at Sarasota Opera, Tamino with Opera Maine, and Ottavio at Detroit Opera. He portrayed Jim Casy in *The Grapes of Wrath* in the production's premiere at Opera Theatre of Saint Louis and returned to the role at Michigan Opera Theatre. Recent highlights include a debut as Alfredo in *La traviata* in St. Louis, where he trained as a Gerdine Young Artist and Gaddes Festival Artist. Agpalo performed with Chicago Folks Operetta in the *Cousin from Nowhere* and Lehar's *The Land of Smiles*. He has been an artist at Chautauqua Opera and Central City Opera and is a graduate of Northwestern University's Bienen School of Music and the University of Central Florida.



HOSS BROCK | ENSEMBLE

Previously at Lyric: Giuseppe/*La traviata* (2018/19).

Brock, a Lyric Opera Chorus member, has had solo roles in the company's productions of *La traviata, My Fair Lady, The Sound of Music, and Oklahoma!*. The tenor has portrayed Almaviva/*The Barber of Seville* with Lyric Unlimited's Opera in the Neighborhoods program and recently appeared as Alfredo/*La traviata* with the Lake Geneva Symphony Orchestra. Brock has performed on San Francisco Opera's mainstage (*Der Rosenkavalier*) and with the Chicago Symphony Orchestra, Peninsula Music Festival, Northwest Indiana Symphony, and Grant Park Music Festival.



WILLIAM M. COMBS | ENSEMBLE

Previously at Lyric: Mike/*Oklahoma!* (2012/13).

A longtime member of the Lyric Opera Chorus, Combs has combined opera and musical theater throughout his career. From Matt/*The Fantasticks* for its Soviet premiere in Moscow to the Beast/Disney's *Beauty and the Beast*, the tenor has enjoyed performing in multiple genres around Chicago and the U.S. He is an active voice instructor as well as a National Board of Governors member with the American Guild of Musical Artists.



DESIREE HASSLER | ENSEMBLE

A member of the Lyric Opera of Chicago chorus, the soprano has covered numerous roles with the company. Recent performances include Bach's B Minor mass with Chicago Bach Project (John Nelson, conductor), Violetta in *La traviata* with the Lake Geneva Symphony Orchestra, Ellen in *Oklahoma!* at Lyric, Kondja in *The Rose of Stambul* with Chicago Folks Operetta, and soprano soloist in the Brahms Requiem; *Knoxville: Summer of 1915* with the Prairie Ensemble; Vaughan Williams' *Sea Symphony*; and in Haydn's *Lord Nelson Mass* with the Wichita Symphony. A California native, Hassler has successfully competed at the Bel Canto Competition, Metropolitan Opera National Council Auditions, and International Franz Liszt Competition, and is the recipient of many distinguished awards. She currently serves on the voice faculty of the Moody Bible Institute.



MARIE SOKOLOVA | ENSEMBLE

Sokolova has been a full-time member of the Lyric Opera Chorus since 2008, and has performed various roles and understudies at Lyric in such productions as *Ernani, The Magic Flute, Hansel & Gretel, Dead Man Walking, L'elisir d'amore, Elektra, The Passenger, Die Entführung aus dem Serail, Showboat, and Lulu*. She is the recipient of many awards, including a two-time regional finalist with the Metropolitan Opera National Council, and has distinguished herself as a soloist in many oratorio and concert works across the country.



VINCE WALLACE | ENSEMBLE

Previously at Lyric: Chief's Son #1/*The Walkers* in *Proximity* (2022/23).

The American bass-baritone has made frequent ensemble appearances at Lyric, and played the Commissioner in *La traviata* (2018/19) and Court Usher in *Rigoletto* (2017/18). Last season, he performed in the ensemble for *Fire Shut Up In My Bones* (2021/22) at the Metropolitan Opera. At Chicago Opera Theater, he took the roles of Sid in *Albert Herring* (2023), Tommie in *Freedom Ride* (2020, world premiere), Queequeg in *Moby Dick* (2019), and Mr. Kofner/*The Consul* and Mr. Lister/*Elizabeth Cree* (2017/18). With Lyric Unlimited in 2016, he performed the role of Orpheus in *Jason and the Argonauts*.



CORINNE WALLACE-CRANE | ENSEMBLE

Previously at Lyric: GPS/*Four Portraits* in *Proximity* (2022/23).

At Lyric, Wallace-Crane has taken the roles of Shaindel/*Fiddler on the Roof* (2022/23), 3rd Knaben/*The Magic Flute* (2021/22), Sister Lillianne/*Dead Man Walking* (2019/20), Sprite/*Cendrillon* (2018/19), and Night Maid/*My Fair Lady*

(2016/17). She was featured with the Grant Park Music Festival as the alto soloist in Vivaldi's *Gloria* in 2021 and Rachmaninoff's *Vespers* in 2017. This summer she will return to the festival in Mendelssohn's *The First Walpurgis Night*. Wallace-Crane trained as a young artist at the Natchez Opera Festival, Central City Opera, and Sarasota Opera.



NICHOLAS WARD | ENSEMBLE

Previously at Lyric: *Moralès/Carmen* (2022/23) and *Jailer/Tosca* (2021/22).

The baritone has been a member of Lyric Opera of Chicago's Chorus since 2019, and appeared in *comprimario* roles in Lyric's *Dead Man Walking* (2019/20) and *Tosca* (2021/22). He has also performed with Lyric's *Opera in the Neighborhoods* productions, portraying the Father in *Hansel and Gretel* in the Park, and Charles Knight in *Rhoda and the Fossil Hunt*. He has performed across the country with Opera Birmingham, Chicago Opera Theater, Florida Grand Opera, Union Avenue Opera, Opera Fayetteville, Opera in the Heights, Central City Opera, and many more. He is a three-time Regional Finalist in the Metropolitan Opera National Council Auditions, First Place Winner of the Opera Birmingham Competition, and a finalist for the Luminarts Competition, the Opera Guild of Dayton Competition, and FAVA's Grand Concours de Chant. He received his degrees from the University of Michigan and the University of Cincinnati-CCM.



RON WATKINS | ENSEMBLE

Watkins, a Lyric Opera Chorus member since 1992, has performed seven solo roles at Lyric, most recently in *Der Rosenkavalier*, *The King and I* (both 2015/16), and *Carousel*

(2014/15). He has also appeared at DuPage Opera Theatre as Marcello/*La bohème*, at the Grant Park Music Festival as Samuel/*The Pirates of Penzance*, and at Light Opera Works as Captain Corcoran/*HMS Pinafore* and Sir Richard Cholmondeley/*The Yeomen of the Guard*, as well as with Chicago Opera Theater, Madison's Opera for the Young, Eastman Opera Theater, and College Light Opera Company in Falmouth, Massachusetts.



NIKOLAS WENZEL | ENSEMBLE, u/s OFFICER KRUPKE

The bass-baritone made his debut with Lyric Opera in 2016, appearing as the Second

Trojan Soldier in Berlioz's *Les Troyens*. He has since appeared in a wide range of roles with the company, most notably as Flora's Servant in *La traviata* (2019/20), the Sergeant in *La bohème* (2018/19), and the Bass of the Cockney Quartet in *My Fair Lady* (2016/17). Wenzel has performed as a soloist with other leading opera companies, including the Madison Opera, Chicago Opera Theater, and Opera Theatre St. Louis, and is a three-time Regional Finalist in the Metropolitan Opera National Council Auditions.



TARA WHEELER | ENSEMBLE

A chorus member at Lyric, the soprano has been a featured soloist in various concert works including Handel's *Messiah* and Haydn's *Creation*. Favorite operatic roles include *Valencienne/The Merry Widow*, *First Lady/Die Zauberflöte*, *Saint Marguerite/Joan of Arc at the Stake*, and *Jessie/Mahagonny Songspiel*. Wheeker won first place at the New York Lyric Opera Theater vocal competition in 2019 and was a finalist and first runner-up for the Palm Springs Opera Guild 2018 Vocal Competition. She holds a Master of Music in Voice Performance from the University of Cincinnati, College-Conservatory of Music (CCM), and a Bachelor of Music in Voice Performance and Music Education from CCM.



MICHELLE K. WRIGHT | ENSEMBLE

Previously at Lyric: *Emilia/Otello* (2001/02) and *Mercédès/Carmen* (1999/00).

Wright is an alumna of Lyric's Ryan Opera Center, with which she created the role of Lucy Cross/Michael John LaChiusa's *Lovers and Friends*. Prominent among the mezzo-soprano's six mainstage roles at Lyric have been *Emilia/Otello*, *Mercédès/Carmen*, and the Tango Singer/*The Great Gatsby* (company premiere). Other credits include *Cherubino/The Marriage of Figaro* (Chicago's Opera Piccola), *Isabella/L'italiana in Algeri* (Pamiro Opera), *Armindo/Partenope* (Glimmerglass Festival), *Ino/Semele* (Spoleto Festival), *Dinah/Trouble in Tahiti* (Tampa Opera), *Ramiro/La finta giardiniera* (San Francisco Opera Center), and the Fox/*The Cunning Little Vixen* (Tulsa Opera).

UNDERSTUDIES



JEFFREY KRINGER | u/s TONY

Lyric debut

The acclaimed stage performer has undertaken quintessential roles like Arthur (*Camelot*), Tony (*West Side Story*), Frederick (*Pirates of Penzance*), and Billy Bigelow (*Carousel*). This summer he'll serve as faculty for the Open Jar Institute in NYC. Kringer earned a BFA at SUNY Fredonia.



ALEXIS ROSTON | u/s DOC & GLAD HAND

Lyric debut

Roston's portrayal of Billie Holiday in *Lady Day at Emerson's Bar and Grill* received widespread acclaim, including Chicago's Jeff, Black Theater Alliance, and Black Excellence Awards. Other credits nationwide include *Don't Make Me Over: A Tribute to Dionne Warwick* (Jeff Award Nomination, Black Theater Alliance Award Nomination), *Mary Poppins* (Mrs. Banks), *Porgy and Bess* (Bess), *Ragtime* (Sarah), *Sister Act* (Deloris), *For Colored Girls...* (Lady in Orange), *Ain't Misbehavin'* (Charlaine), *Shrek: The Musical* (Dragon),

The Wiz (Addaperle), *The Piano Lesson* (Grace), *Crowns* (Jeanette), *Company* (Sarah), *Godspell* (Joanne), *Smokey Joe's Cafe* (Brenda), *The Color Purple*, and *Hairspray*. She holds a BFA in musical theatre from Howard University.



AMY ROMERO | SWING
Lyric debut

Romero recently played Velma and covered the Sharks ensemble in *West Side Story* at Teatro Lirico di Cagliari in Italy. Her regional credits include: the Spanish language world premiere of *On Your Feet! en Español* at GALA Hispanic Theatre in Washington, D.C.; *On Your Feet!* at North Carolina Theatre; *The Wiz* (Florida), and the NYC workshop of *Thoughts of a Colored Man*. She has also toured nationally with productions such as *Legally Blonde*, recording artist Lisa Lisa's concert tour, and *Daniel Tiger's Neighborhood*.



JOSH ZACHER | SWING, u/s ACTION
Lyric debut

The NYC based actor, dancer, and choreographer was seen in the national tours of *The Prom* (1st Nat'l, Dance Captain), *A Chorus Line* (Larry, Mike/Mark u/s), and *The Elf on the Shelf*. He has performed at The Kennedy Center, North Shore Music Theatre (*The Music Man*), The 5th Avenue Theatre, The Ordway (*West Side Story*), Kansas City Starlight, The REV Theatre Co. (*Footloose*), Theatre By The Sea (*Newsies*), The Sharon Playhouse (*Les Miserables*), and The Wagon Wheel Center for the Performing Arts. Zacher is a guest faculty member at Broadway Dance Center and a teaching artist for New York City Center.

PRODUCTION TEAM



JAMES LOWE | CONDUCTOR
Previously at Lyric: *West Side Story* (2018/19) and *Oklahoma!* (2012/13).

Lowe made his Broadway debut conducting *Gypsy*, starring Patti LuPone, and was music director and conductor of the revivals of *Les Misérables* and *Anything Goes* (Grammy nomination). He led the first national tour of *The Light in the Piazza*, and was music director and conductor for the touring National Theatre production of *My Fair Lady*. Recent operatic engagements include *La bohème* (Houston Grand Opera), Jeanine Tesori's *The Lion, The Unicorn, and Me* (Washington), *Show Boat* (Glimmerglass Festival), and Rachel Portman's *The Little Prince* (Utah Opera). Lowe has also appeared at the San Francisco, Tulsa, New York City, and Wolf Trap opera companies. At Houston Grand Opera he has worked on productions of works of Mozart, Bizet, Copland, Sondheim, Portman, and Heggie. Lowe has also led the Houston Symphony, Memphis Symphony, Jacksonville Symphony, and American Composers Orchestra. He has performed as piano soloist with the Rochester Philharmonic Orchestra and has given recitals at such

distinguished venues as the Aspen Music Festival, the Chautauqua Institute, and the University of Texas-San Antonio New Music Festival.



FRANCESCA ZAMBELLO | DIRECTOR

Previously at Lyric: Six productions since 1999/00, most recently *Florencia en el Amazonas* (2021/22) and *Luisa Miller* (2019/20).

The internationally recognized director of opera and theater has served as the Artistic Director of Washington National Opera at the Kennedy Center since 2013. She is also the Artistic & General Director of the Glimmerglass Festival, Emerita. She served as the Artistic Advisor to the San Francisco Opera from 2005 to 2011 and as the Artistic Director of the Skylight Theater from 1987 to 1992. Zambello's U.S. directing debut took place at the Houston Grand Opera with a production of *Fidelio*. She debuted in Europe at Teatro la Fenice in Venice with *Beatrice di Tenda* and has since staged new productions at major theaters and opera houses in Europe, Asia, Australia, Russia, and the U.S. She has worked at more than 50 international opera houses including the Metropolitan Opera, La Scala, Paris Opera, Bolshoi, Munich State Opera, Covent Garden, and Opera Australia. She has been named a Chevalier des Arts et des Lettres by the French government, a Knight with the Order of the Star of Italy and received the Russian Federation's Arts Medal, all for her service to culture. Other honors include three Olivier Awards from the London Society of Theatres and two Evening Standard Awards, and she has twice received the French Grand Prix des Critiques for her work at the Paris Opera. She also received the Medallion Society Award from San Francisco Opera, recognizing 30 years' work for the company.



PETER J. DAVISON | SET DESIGNER
Previously at Lyric: Five productions since 2008/09, most recently *Florencia en el Amazonas* (2021/22) and *West Side Story* (2018/19).

The British designer's productions with prestigious companies throughout Europe and the U.K. include *The Marriage of Figaro* (Vienna); *Die Gezeichneten*, *Falstaff*, and *Die schweigsame Frau* (Zurich); *Capriccio* (Berlin, Turin); *Der Rosenkavalier*, *Carmen*, and *Mary Stuart* (English National Opera); *Anna Bolena* (Bavarian State Opera); *Mitridate*, *Re di Ponto* and *Carmen* (Salzburg); *The Queen of Spades* (Covent Garden); *Guillaume Tell* (Opéra National de Paris); and *Cyrano de Bergerac* (La Scala), among many other productions and venues. In addition to *The Rake's Progress*, *The Marriage of Figaro*, and *Cyrano de Bergerac* at the Metropolitan Opera, his work has also been seen in the U.S. at Washington National Opera (eight productions), San Francisco Opera, Houston Grand Opera, The Dallas Opera, and the Glimmerglass Festival. His theater credits include productions for Broadway (*Medea*, *Hamlet*, *Deuce*, *Copenhagen*, *Democracy*, *Is He Dead*, *Blithe Spirit*), the Royal Shakespeare Company, the National Theatre, London's West End, and the Chichester Festival Theatre.

Among his many musical-theater productions are *Jesus Christ Superstar* (U.K./U.S.A. tour, Broadway) and *Show Boat* (Royal Albert Hall). Davison is a former Tony, Drama Desk, and Olivier Award nominee.



JESSICA JAHN | COSTUME DESIGNER

Previously at Lyric: *West Side Story* (2018/19), *Norma* (2016/17), and *Anna Bolena* (2014/15).

Jahn has collaborated with directors Francesca Zambello, Diane Paulus, Tina Landau, Tommy Kail, Jessica Blank, and Kenny Leon; writers Nora Ephron, Eisa Davis, Charles Busch, Charles Fuller, Tracy K. Smith, and Mark Campbell; and some of her past projects include *Gloria: A Life* (Daryl Roth Theatre), *Coal Country* (The Public Theatre), *Blue* (Glimmerglass Festival), *Orpheo et Euridice* (San Francisco Opera), *Monodramas* (New York City Opera), *The Crucible* (Glimmerglass Festival), *The Manchurian Candidate* (Minnesota Opera, world premiere), *Dead Man Walking* (Washington National Opera), and *Moby Dick* (Utah Opera). She has taught at both NYU and Rutgers University, and is an Adjunct Costume Design Professor with Brandeis University's Theater Arts Department. She is currently working toward her Masters in Cultural Anthropology at Hunter College. *Jessica Jahn is supported by the Richard P. and Susan Kiphart Costume Designer Endowed Chair.*



MARK McCULLOUGH | LIGHTING DESIGNER

Previously at Lyric: Seven productions since 2008, most recently *Florenca en el Amazonas* (2021/22) and *Luisa Miller* (2019/20).

The lighting designer's most notable achievements include productions at the Metropolitan Opera (*The Marriage of Figaro*), Vienna Staatsoper (*Macbeth*, reprised there last season), Bolshoi Theatre (*La traviata*), Beijing's National Centre for the Performing Arts (*Les contes d'Hoffmann*), La Scala (*Cyrano de Bergerac*), Madrid's Teatro Real (*Luisa Miller*), and London's Royal Opera (*The Queen of Spades*); the major companies of Washington, Boston, Miami, Seattle, Dallas, San Diego, and St. Louis; and Bard College's Fisher Center and the Glimmerglass Festival. Among McCullough's extensive theater credits internationally are the revival of *Jesus Christ Superstar* (Broadway and U.K. tour); *Whistle Down the Wind* (Aldwych Theatre, London); *The White Devil* and *Don Carlos* (Royal Shakespeare Company); *Der Besuch der alten Dame* (Ronacher Theatre, Vienna); *Artus* (St. Gallen, Switzerland) and *Rebecca* (St. Gallen, Stuttgart's Paddium Theater); and numerous off-Broadway productions. McCullough's regional theater work has been seen at many of this country's most distinguished companies. *Lighting designers are supported by the Mary-Louise and James S. Aagaard endowment in honor of Duane Schuler.*



MARK GREY | SOUND DESIGNER

Previously at Lyric: Eight productions since 2007/08, most recently *West Side Story* (2018/19), and *My Fair Lady* (2016/17).

Grey is an Emmy Award-winning sound designer and composer who made history as the first sound designer for the New York Philharmonic (*On the Transmigration of Souls* (2002), which also won the Pulitzer Prize in Music) and the Metropolitan Opera (*L'Amour de Loin* (2016), *The Merry Widow* and *Bluebeard's Castle/Iolanta* (both 2015), *Death of Klinghoffer* (2014), *Nixon in China* (2011), and *Doctor Atomic* (2008)). His grand opera, *Frankenstein*, premiered at La Monnaie in Brussels in 2019, and his mobile chamber opera, *Birds In The Moon*, premiered with the New York Philharmonic in 2021. Grey has had several commissions from the Atlanta Symphony, the Los Angeles Philharmonic, and others, and he has collaborated with composer John Adams and several others for nearly three decades. His sound designs have been heard throughout most major concert halls, HD simulcast theaters, and opera houses worldwide.



MICHAEL BLACK | CHORUS MASTER

The Australian chorus director is in his 11th season at Lyric, having held this position at Opera Australia in Sydney from 2001 to 2013. Black has served in this capacity for such distinguished organizations as the Edinburgh International Festival, Opera Holland Park (London), the Chicago Symphony Orchestra, and, in Australia, the Sydney Symphony Orchestra, the Philharmonia Choir, Motet Choir, the Cantillation chamber choir, and the Melbourne Symphony Orchestra. Other activities include preparing *The Damnation of Faust* chorus and Haydn's *Creation* at the Grant Park Music Festival, where he has worked for two seasons. He has served as chorus director for close to 140 different operas on four continents, and his work has been recorded and/or aired on ABC, BBC, PBS, for many HD productions in movie theaters and on television. *Michael Black is supported by the Howard A. Stotler Chorus Master Endowed Chair.*



JOSHUA BERGASSE | ORIGINAL CHOREOGRAPHY REPRODUCTION

Lyric debut

Bergasse won the Emmy Award for his choreography on NBC's musical drama *SMASH*. On Broadway, he choreographed the revival of *On The Town*, for which he received an Astaire Award and was nominated for TONY, Drama Desk, and Outer Critics Awards. Also on Broadway, Bergasse choreographed the revival of *Gigi*, as well as the debut of *Charlie and the Chocolate Factory*. Off-Broadway credits include *Sweet Charity* starring Sutton Foster; *Cagney* (Drama Desk, Astaire, Outer Critics Circle Award nominations for choreography); *Bomb-Itty of Errors*; and *Captain Louie*. Josh's other credits as a choreographer include *West Side Story* at

the Stratford Festival; *Little Me*, and *It's A Bird... It's A Plane... It's Superman!* at City Center Encores!; *Pirates of Penzance* at Barrington Stage Co; *Guys and Dolls*, and *The Sound of Music* at Carnegie Hall. He also choreographed multiple segments on television's *So You Think You Can Dance* and PBS's *Sinatra: A Voice for a Century*.



KIIRA SCHMIDT CARPER | ASSOCIATE CHOREOGRAPHER
Lyric debut .

Carper's Broadway credits include *Follies*, *Anything Goes*, *The Mystery of Edwin Drood*, *Irving Berlin's White Christmas*, *No No Nanette* (NYCC), and *Stairway to Paradise* (NYCC). She worked on national tours of *Fame*, *Crazy for You*, and *A Chorus Line*, and international highlights include the Edinburgh Fringe Festival and Broadway Asia's *Real to Reel*. Select regional credits: *Mame* (The Kennedy Center), *Cats* (The MUNY), *A Chorus Line* (The MUNY), *The Bandwagon* (The Old Globe), *Oklahoma* (Papermill Playhouse), *West Side Story* (Barrington Stage), *White Christmas* (The Fox Theater), *Sweet Charity* (Gateway Playhouse), *Chicago* (Riverside Theater), *Damn Yankees*, *Gypsy*, *Show Boat*, and *Grease*. Carper assisted Josh Bergasse in recreating the work of Jerome Robbins in *West Side Story* at Teatro Lirico in Sardinia, Italy, Barrington Stage, The North Carolina Theater, The Fulton Theater, and for the 50th Anniversary celebration event in Times Square in 2011. She is currently an Assistant Professor of Musical Theatre at Syracuse University.



SARAH HATTEN | WIGMASTER & MAKEUP DESIGNER

Lyric's wigmaster and makeup designer has worked in a wide repertoire at Des Moines Metro Opera, Detroit Opera (formerly Michigan Opera Theatre), Columbus Opera, Toledo Opera, the Cabrillo Music Festival, and the University of Cincinnati College-Conservatory of Music. She has also worked at The Glimmerglass Festival and the major opera companies of Los Angeles, Omaha, Cleveland, Sarasota, and Central City, as well as Wisconsin's American Players Theatre and, in Los Angeles, the Pantages Theatre and the Geffen Playhouse. *Sarah Hatten is supported by the Marlys A. Beider Wigmaster and Makeup Designer Endowed Chair.*



ERIC SEAN FOGEL | ASSOCIATE STAGE DIRECTOR

Previously at Lyric: *Florencia en el Amazonas* (2021/22).

This season Fogel is directing new productions of *Song Bird* (Kennedy Center), *The Sound of Music* (Houston Grand Opera), and *Love and War* (Glimmerglass Festival).

Recently he was the Revival Director for *Norma* (Metropolitan Opera), *Candide!* (Glimmerglass Festival), and *West Side Story* (Teatro Lirico di Cagliari). World premiere credits include: *Klangwolke 2023*, *The Odyssey* (Glimmerglass Festival), *The Lion, Unicorn and Me* (Kennedy Center), *Artus*, *Excalibur* (St. Gallen), and *Princess* (XSBN China). Other notable productions include: *Candide!* (Téâtre du Capitole, Opera National de Bordeaux), *Samson and Delilah*, *The Little Prince* (Kennedy Center), *Pearl Fishers* (Houston Grand Opera), *Le Nozze di Figaro* (Opera Philadelphia), and *Romeo and Juliet* (Shakespeare Theatre Company). For the past 13 years Fogel has been Head of Stage Movement and Choreography at the Glimmerglass Festival, and he is also on staff as a Guest Stage Director at the Metropolitan Opera.



JORDAN LEE BRAUN | ASSISTANT DIRECTOR

Since 2016, Braun has worked on more than two dozen productions at Lyric as either an Associate Director, Assistant Director, or Stage Manager. She has collaborated with directors Richard Jones, Sir David Pountney, Sir David McVicar, Sir Graham Vick, Francesca Zambello, Arin Arbus, Barrie Kosky, Bart Sher, Jonathan Miller, and many more. She most recently directed the youth opera *The Scorpion's Sting* for Lyric Unlimited's Opera in the Neighborhoods program. Braun has also worked with the Washington National Opera, Opera Colorado, Wolf Trap Opera, The Atlanta Opera, Florentine Opera, Opera Omaha, Opera Grand Rapids, Charlottesville Opera, Fort Worth Opera, Sarasota Opera, Toledo Opera, and Opera Carolina.



ALAINA BARTKOWIAK | STAGE MANAGER

Alaina Bartkowiak has been a stage manager and assistant stage manager for Lyric since 2019. She has held stage management roles at Chicago Opera Theater, Music Theater Works, Florentine Opera, Michigan Opera Theater, Opera Omaha, Glimmerglass Festival, and other companies across the country.



KATRINA BACHUS | ASSISTANT STAGE MANAGER

Bachus has worked for Lyric Opera of Chicago since the 2016/17 Season, during which time she has served many roles including Stage Manager, Assistant Stage Manager, Associate Director, and Assistant Director. Additional credits include both stage management and direction credits for the Metropolitan Opera, Los Angeles Opera, and Houston Grand Opera. Bachus holds a degree in Stage Management from the University of Utah.



BILL WALTERS | ASSISTANT STAGE MANAGER

Walters has been Lyric Opera's supernumerary captain for 18 seasons. Opera stage management credits include *I Puritani* and the U.S. Premiere of Michael Berkeley's *Jane Eyre* at Opera Theatre of Saint Louis. Theatre stage management credits: Porchlight Revisits (2014-2022), Barn Theatre (2004-2015), Drury Lane Oakbrook (1998-2002), Candlelight Dinner Playhouse (1988-1997), and *Gypsy!* at Ravinia starring Patty LuPone and Jessica Boevers. Directing credits include Emmerich Kálmán's *Arizona Lady* and *The Circus Princess* at Chicago Folks Operetta.




CHUCK COYL | FIGHT DIRECTOR

A professional fight director for more than 30 years, Coyl is a three time president of the Society of American Fight Directors. Most recently at Lyric Opera he staged the fights

for *Don Carlos*. Other recent credits include the Broadway production and national tour of *August: Osage County*, *The Crucible* and *Superior Donuts* at Steppenwolf Theatre Company; *2666*, *Another Word for Beauty*, and *The Upstairs Concierge* at the Goodman Theatre; and *Sucker Punch* at Victory Gardens Theatre, for which he received a Joseph Jefferson Award nomination. He is a founding member of the Single Action Theatre Company.



SAMMI GRANT | DICTION AND DIALECT COACH

Grant is a Chicago-based dialect coach and voice/speech teacher. Chicago theater credits include Goodman Theatre, Writers Theatre, Timeline Theatre, Drury Lane, Porchlight Music Theatre, The Gift Theatre, Remy Bumppo Theatre, and many more. Film and television credits include *Rescued by Ruby* (Netflix), *Patriot* (Amazon Prime) and *The Exorcist* (Fox). Grant is a voice/speech teacher for The Theatre School at DePaul University. 

Invest in your community

Give your company brand visibility and showcase your commitment to a rich and vibrant quality of life: sponsor performances and programs at one of Chicago's most prestigious performing arts organizations. Corporate sponsorships support Lyric in creating groundbreaking community experiences — while increasing the gravitational pull of our art form, our company, and our city.

GET IN TOUCH

Anna Mattson | Vice President of Development

amattson@lyricopera.org 312.827.5683

Lyric

Photo: Kyle Flubacker

Ryan Opera Center

To keep opera a must-see, must-hear experience, the art form needs outstanding artists who can convey through singing and acting the emotional range and engaging storytelling that are opera's hallmarks. Lyric, through The Patrick G. and Shirley W. Ryan Opera Center, identifies exceptionally talented emerging artists from around the world and provides them with comprehensive training and performance opportunities. On the world's stages, the Center's impressive roster of alumni continually proves the value of training at Lyric.



Standing L-R: Kathryn Henry, Donald Lee III, Ian Rucker, Ron Dukes, Katherine DeYoung, Alejandro Luévanos, Denis Vélez
Sitting L-R: Lunga Eric Hallam, Laureano Quani, Ryan Capozzo, Martin Luther Clark, Lindsey Reynolds, Wm. Clay Thompson, Chris Reynolds
Front L-R: Luther H. Lewis III, Tess Naval

Kyle Flubacker

The 2022/23 Ryan Opera Center Ensemble

Sopranos

Kathryn Henry
Lindsey Reynolds
Denis Vélez

Mezzo-soprano

Katherine DeYoung

Tenors

Ryan Capozzo
Martin Luther Clark
Lunga Eric Hallam
Alejandro Luévanos

Baritones

Laureano Quani
Ian Rucker

Basses

Ron Dukes
Wm. Clay Thompson

Conductor/Pianist

Donald Lee III

Pianist

Chris Reynolds

Stage Director

Luther H. Lewis III

Stage Manager

Tess Naval

Ryan Opera Center alumni around the world

ANN TOOMEY

This season: *Witch/Into the Woods*, Tulsa Opera; *Woglinde/Das Rheingold*, LA Phil.

“When I look back at my three years in the Ryan Opera Center (2016-2019), I am in awe of everything I learned and how much growth I experienced. The tremendous opportunities I was given—as well as the time needed to assimilate what I gained from them—allowed me to cultivate my artistic identity and be confident in expressing it. In the practice room and on the stage, I was able to work with some of the most brilliant and accomplished professionals in the business. Starting with a one-on-one coaching session with Renée Fleming in my first week to singing Musetta in four performances of *La bohème* in my final season, it was an incredible journey, for which I am beyond grateful!”



Ann Toomey performs *Tosca* at Sarasota Opera.

THIS SEASON



Ricardo José Rivera
Poliuto,
Teatro Nuovo

Ensemble member
2018-2021



Denis Vélez
Florencia en el Amazonas, Palacio de Bellas Artes

Ensemble member
2020-2023



Anthony Reed
The Love for Three Oranges, Des Moines Metro Opera

Ensemble member
2019-2022

PROGRAM STAFF

Administration

Dan Novak
Director, The Ryan Opera Center Board Endowed Chair

Craig Terry
Music Director
The Jannotta Family Endowed Chair

Julia Faulkner
Director of Vocal Studies
Elizabeth F. Cheney Foundation

Renée Fleming
Advisor

Susanna McNatt
Manager

Annika Donnen
Associate Librarian

Faculty

Julia Faulkner
Vocal Instruction
Robert and Ellen Marks Ryan Opera Center Vocal Studies Endowment

Deborah Birnbaum
Sir Andrew Davis
Renée Fleming
Enrique Mazzola
Gerald Martin Moore
Patricia Racette
Anne Sofie von Otter
Guest Master Artists

William C. Billingham
Alan Darling
Laurann Gilley
Jonathan Gmeinder

Noah Lindquist
Celeste Rue
Eric Weimer
Coaching Staff

Emanuele Andrizzi
Conducting Instruction

Isabelle Druc
Julia Savoie Klein
Derek Matson
Klára Moldová
Sharon Peterson
Alessandra Visconti
Viktoria Vizin
Foreign Language Instruction

August Tye
Movement Instruction

Orit Carpenter
Beth Clayton
Performance Psychology

Roger Pines
Guest Lecturer and Consultant

Katrina Bachus
Rachel A. Tobias
Production Mentors

Artistic/Production Personnel

Roberto Kalb
Stefano Sarzani
Conductors

Crystal Manich
Kristine McIntyre
Directors

Peggy Stenger
Bill Walters
Stage Managers

Bravissimi

We gratefully acknowledge the members of the Lyric family who have contributed a total of \$1 million+ throughout the history of the company. Lyric thrives due to the incredible generosity of these individuals, foundations, and corporations.

\$50,000,000+

The Facilities Fund of Lyric Opera of Chicago and Chicago Symphony Orchestra, John H. Bryan[°], James W. Cozad[°], H. Laurance Fuller, and Patrick G. Ryan

\$30,000,000+

Nancy W. Knowles[°]

\$15,000,000+

Patrick G. & Shirley Welsh Ryan

\$10,000,000+

Anonymous
Julie & Roger Baskes
The Chicago Community Trust
The Crown Family
J. Thomas Hurvis & Ann Andersen
and the Caerus Foundation
Elizabeth Morse Genius Charitable Trust
and The Elizabeth Morse Charitable Trust
National Endowment for the Arts
The Negaunee Foundation

\$7,500,000+

Sonia Florian
Gramma Fisher Foundation of Marshalltown, Iowa
Illinois Arts Council Agency
Martha Jacobshagen[°]
John D. & Alexandra C. Nichols
Anne & Chris Reyes

\$5,000,000+

Anonymous (4)
Abbott Fund
Ameritech/SBC/AT&T
Stefan Edlis[°] & Gael Neeson
The Grainger Foundation
Mr. & Mrs. Dietrich M. Gross
Irma Parker[°]
The Kiphart Family
John D. and Catherine T. MacArthur Foundation
The Andrew W. Mellon Foundation
The Monument Trust (UK)
Sidney L. & Bettie B. Port[°]
Earl & Brenda Shapiro Foundation
Lisbeth Stiffel
Mr. & Mrs. William C. Vance

\$2,500,000+

Anonymous (3)
American Airlines
Aon
Mrs. A. Watson Armour[°]
Boston Consulting Group
Randy L. & Melvin R.[°] Berlin
Henry & Gilda Buchbinder Family
Carolyn S. Bucksbaum
The Butler Family Foundation
Challenge III Fund – Government
City of Chicago Department of Cultural Affairs
and Special Events
Nelson D. Cornelius[°]
Mr.[°] & Mrs. John V. Crowe
The Davee Foundation
Mrs. Mary B. Galvin
Ann & Gordon Getty Foundation
Mr. & Mrs. William B. Graham[°]
Howard L. Gottlieb & Barbara G. Greis

John R. Halligan Charitable Fund
 The Harris Family Foundation
 Invesco QQQ
 ITW
 The Edgar D. Jannotta Family
 Mr.° & Mrs. Fred A. Krehbiel
 Josef & Margot Lakonishok
 Fred McDougal° & Nancy Lauter McDougal
 Malott Family Foundation
 Mazza Foundation
 Robert & Susan Morrison
 Sylvia Neil & Daniel Fischel
 Northern Trust
 Mr. & Mrs. William A. Osborn
 PwC
 Daniel F. & Ada L. Rice Foundation
 Dr. Scholl Foundation
 Clarke and Adine Stayman Trusts
 Robert and Penelope Steiner Family Foundation
 Howard A. Stotler°
 Mrs. Herbert A. Vance°
 Cynthia Wood°

\$1,000,000+

Anonymous (3)
 Katherine A. Abelson
 Paul M. Angell Family Foundation
 Walter F. Bandi° & Elsa E. Bandi°
 Bank of America and Merrill Lynch
 Baxter International Inc.
 James N. & Laurie V. Bay
 Marlys A. Beider
 BMO Harris Bank
 The Brinson Foundation
 Bulley & Andrews
 Marion A. Cameron-Gray
 David W. Carpenter and Orit K. Carpenter
 JP Morgan Chase & Co.
 Elizabeth F. Cheney Foundation
 Mr.° & Mrs. James W. Cozad
 Joanne Toor Cummings°
 The Edgar Foster Daniels Foundation
 Deutsche Bank
 Exelon
 Maxine P. & W. James Farrell
 Elaine Frank°
 Richard° & Barbara Franke
 Brena & Lee A. Freeman, Sr. Charitable Association
 Lloyd A. Fry Foundation

Ambassador & Mrs. Ronald Jay Gidwitz
 Ethel & William Gofen
 Sue & Melvin Gray
 Harold Hartshorne, Jr.°
 Mr. & Mrs. Ben W. Heineman°
 Walter E. Heller Foundation
 H. Earl & Miriam U. Hoover°
 Invenergy
 Jenner & Block
 Kemper Educational & Charitable Fund
 Kirkland & Ellis Foundation
 Mr. & Mrs. Sanfred Koltun
 Kraft Foods
 Karen Z. Gray-Krehbiel & John H. Krehbiel, Jr.
 LaSalle Bank
 Anne P. Lederer Research Institute
 Arthur B. Logan°
 Jim° & Kay Mabie
 Brooks and Hope McCormick Foundation
 Chauncey and Marion D. McCormick
 Family Foundation
 Robert R. McCormick Trust
 Jim° & Vicki Mills/Jon & Lois Mills
 Richard M. Morrow°
 Allan & Elaine Muchin
 Jerome and Elaine Nerenberg Foundation
 Susan & Nick Noyes/Make It Better Media Group
 Nuveen Investments
 Gregory O'Leary & Patricia Kenney
 David & Sheila Ormesher
 I.A. O'Shaughnessy Foundation
 Peer & Sarah Pedersen°
 Polk Bros. Foundation
 Prince Charitable Trusts
 Mrs. Jay A. Pritzker
 The Regenstein Foundation
 Lloyd E. Rigler - Lawrence E. Deutsch Foundation
 Harry A. Root, Jr.°
 Richard O. Ryan
 Sara Lee Foundation
 Rose L. Shure° & Sidney N. Shure°
 Mr. & Mrs. J. W. Van Gorkom°
 The Wallace Foundation
 Lois L. Ward°
 Roberta L. Washlow & Robert J. Washlow
 Robert & Floretta Weiss
 Bernard E. Williams Trust
 Zell Family Foundation

° Deceased

Production sponsors

Lyric's 2022/23 Season is presented by  **Invesco** **QQQ**

Lyric is grateful for our 2022/23 Season production sponsors.

ERNANI

Alice & John Butler⁺
H. Gael Neeson⁺
Sylvia Neil & Daniel Fischel⁺
Robert and Penelope Steiner Family Foundation⁺



Patricia A. Kenney & Gregory J. O'Leary

FIDDLER ON THE ROOF

Lead Sponsor: The Negaunee Foundation
Gramma Fisher Foundation of Marshalltown, Iowa
The Zell Family Foundation
Marlys A. Beider
The Davee Foundation
The Harris Family Foundation

Invenergy

Lori Ann Komisar and Morris Silverman
Randy L. & Melvin R.° Berlin
Ethel & Bill Gofen

DON CARLOS

Presenting Sponsors: Julie & Roger Baskes
An Anonymous Donor
Alice & John Butler⁺
H. Gael Neeson⁺
Sylvia Neil & Daniel Fischel⁺
Robert and Penelope Steiner Family Foundation⁺
Josef & Margot Lakonishok
Sonia Florian
The Julius Frankel Foundation



LE COMTE ORY

Alice & John Butler⁺
H. Gael Neeson⁺
Sylvia Neil & Daniel Fischel⁺
Robert and Penelope Steiner Family Foundation⁺

°Deceased

Additional support for Lyric's 2022/23 Season is generously provided by the **Production Circle**.

To learn more about Lyric sponsorship opportunities, please visit lyricopera.org/support-lyric/major-investments/production-sponsorships.

HANSEL AND GRETEL



THE FACTOTUM



The Patrick G. and Shirley W. Ryan Opera Center Board
Roberta L. & Robert J. Washlow
John R. and Grace K. Stanek Charitable Fund
Gene & Jean Stark



Bill & Orli Staley Foundation
Mary Stowell
Eisen Family Foundation
An Anonymous Donor
Laurel Appell Lipkin

CARMEN



Liz Stiffel
The Lauter McDougal Charitable Fund

PROXIMITY

An Anonymous Donor



WEST SIDE STORY

Lead Sponsor: The Negaunee Foundation
The Davee Foundation
Bank of America

+ Enrique Circle

The Enrique Circle is composed of Lyric's most dedicated supporters who are committed to championing Maestro Enrique Mazzola's exciting artistic vision and legacy.

The logo for the Lyric Opera of Chicago, featuring the word "Lyric" in a white, elegant serif font on a yellow rectangular background.

OPERA OF
CHICAGO

2023 | 24 Season

The Flying Dutchman

The Daughter of
the Regiment

Jenůfa

Cinderella

Champion

Aida

Audra McDonald
in Concert

Season Opening Gala

Mozart Requiem

**SUBSCRIPTIONS
ON SALE NOW**

Secure your seats today.

lyricopera.org

AN
EVENING
WITH
AUDRA
McDONALD

**Friday, October 6, 2023
at 7:30PM**

Experience the inimitable talent of Audra McDonald in concert with the Lyric Orchestra, conducted by Andy Einhorn, in a spellbinding evening of songs, from theater classics to new works and seldom-heard gems.

Winner of six Tony Awards, two Grammy Awards and an Emmy Award, Audra McDonald possesses a "lustrous lyric soprano" (*The New York Times*) and an incomparable gift for dramatic truth-telling. This one-night only performance is not to be missed.

Tickets on sale June 15
lyricopera.org/audra



Supporting our future— endowments at Lyric

As a perpetual fund that annually distributes a designated portion of earnings and investment income, endowments provide a steady source of funding so Lyric can be a leader in the opera world—now and into the future.

LYRIC ENDOWED CHAIRS

Supports

Chorus Master
Concertmaster

Costume Designer
General Director

Lighting Director

Music Director
Production and Technical
Director⁺

Wigmaster and Makeup
Designer⁺

Ryan Opera Center Director
Ryan Opera Center
Music Director

Established by

Howard A. Stotler
Mrs. R. Robert Funderburg,
in honor of Sally Funderburg
Richard P. and Susan Kiphart
The Women's Board,
in loving memory
of Ardis Krainik
Mary-Louise and James S. Aagaard,
in honor of Duane Schuler
John D. and Alexandra C. Nichols
Allan and Elaine Muchin

Marlys A. Beider, in loving
memory of Harold Beider
The Ryan Opera Center Board
Jannotta Family

LYRIC PRODUCTION ENDOWMENT FUNDS

Supports

Baroque Operas
Bel Canto Operas
French Operas
German Operas
Italian Operas
Mozart Operas

Puccini Operas
Verdi Operas
Wagner Operas

Established by

Anonymous
Mr. and Mrs. William H. Redfield
W. James and Maxine P. Farrell
Irma Parker
NIB Foundation
Regenstein Foundation,
in honor of Ruth Regenstein
Mary Patricia Gannon
Guild Board
Anonymous

LYRIC ENDOWMENT FUNDS

Sarah and A. Watson Armour III Endowment
Shirley and Benjamin Gould Endowment
John D. and Catherine T. MacArthur Endowment
Public Engagement Endowment Fund

DISCOVER LYRIC ENDOWMENT FUNDS

The Grainger Foundation, for the *NEXT* program
Bruce Gober MD and Donald Ratner Endowment Fund⁺

RYAN OPERA CENTER ENDOWMENT FUNDS

Dr. C. Bekerman Endowment⁺
Thomas Doran Endowment⁺
Boyd Edmonston & Edward Warro Endowment⁺
James K. Genden and Alma Koppedraijer Endowment⁺
Bruce Gober MD and Donald Ratner Endowment Fund⁺
H. Earl and Miriam U. Hoover Endowment Fund
J. Thomas Hurvis Endowment Fund,
in memory of Richard P. Kiphart
Robert and Ellen Marks Ryan Opera Center Vocal Studies Director
Endowment, in memory of Gianna Rolandi
Lois B. Siegel Endowment
Joanne Silver Endowment⁺
Drs. Joan and Russ Zajchuk Endowment⁺

LYRIC UNLIMITED — LEARNING AND CREATIVE ENGAGEMENT ENDOWMENT FUNDS

Katherine A. Abelson Education Endowment
Dr. C. Bekerman Endowment⁺
Raynette and Ned Boshell Endowment
George F. and Linda L. Brusky Youth Education Endowment⁺
The Chapters' Education Endowment, in memory of Alfred Glasser
James K. Genden and Alma Koppedraijer Endowment⁺
Bruce Gober MD and Donald Ratner Endowment Fund⁺



With major support provided from the Nancy W. Knowles Student and Family Performances Fund

During her lifetime, Carol Fox Award recipient Nancy Knowles generously invested her time, talents, and leadership to advance Lyric through her membership on the Board of Directors, Executive Committee, and the Guild Board. In recognition of her extraordinary gift to the Campaign for Excellence, Lyric named the Nancy W. Knowles Lobby in 2007. Later, Nancy made a significant gift in support of the Breaking New Ground Campaign, creating the Nancy W. Knowles Student and Family Performances Fund, which she secured by including Lyric as a beneficiary of her estate—a remarkable continuation of her lifetime generosity. Lyric will forever be grateful for Nancy's extraordinary generosity and for creating a fund through her thoughtful gift planning that will support children and family programming at Lyric for years to come.

⁺**Future Planned Gift** These donors have named Lyric in their will, trust, IRA, or other planned giving possibilities to establish an endowment fund in their name to support Lyric, its programs, and positions forever. Learn how to leave a lasting legacy by contacting **Mike Biver**, Senior Director of Gift Planning, at **312.827.5655** or email **mbiver@lyricopera.org**.



“

My bequest to Lyric provides me with a sense of pride to know that I will play a small role in Lyric's future. It is an expression of gratitude for decades of remarkable artistic experiences that enriched my life.

Joan Berger

PASSION... Pass it on.

The Ardis Krainik Society

To learn more about leaving a lasting legacy at Lyric, please contact **Mike Biver**, Senior Director of Gift Planning
mbiver@lyricopera.org | 312.827.5655

Lyric

ARDIS KRAINIK
SOCIETY

Gift planning at Lyric

Ardis Krainik Society at Lyric | This group consists of dedicated supporters who have designated a special gift through their will, trust, IRA, or other planned giving method to benefit Lyric into the future.

ARIA BENEFACTORS

Lyric would like to acknowledge the extraordinary philanthropy of the following individuals who have made significant legacy commitments of \$1,000,000 or more and who comprise the Ardis Benefactors of the Ardis Krainik Society.

Anonymous (4)
Paul & Mary Anderson
Family Foundation
Marlys A. Beider
Dr. C. Bekerman
Marion A. Cameron-Gray
Christopher Carlo & Robert Chaney
David^o & Orit Carpenter
Robert F. Finke
Amanda & Matthew Fox
James K. Genden^o & Alma Koppedraier
Bruce Gober MD & Donald Ratner^o
Howard Gottlieb
Sue & Melvin Gray
Dr. Petra B. Krauledat & Dr. W. Peter Hansen
Philip G. Lumpkin
John Nigh
Julia Pernet
Richard Ryan
Diane Marie Tkach & James F. Freundt
Dr. & Mrs. Peter Willson
Rabbi Larry^o & JoAnne Johnson Winer
Stephen R. Winters & Don D. Curtis
Dr. Robert G. Zadylak & James C. Kemmerer
Drs. Russ & Joan Zajtchuk
Anne Zenzer

SOCIETY MEMBERS

Anonymous (148)
Valerie & Joseph Abel
Louise Abrahams
Richard Abram & Paul Chandler
Carol A. Abrioux
Dr. Whitney Addington
Ginny Alberts-Johnson & Lance Johnson

Carl H. & Cynthia Albright
Judy L. Allen
Louise E. Anderson
Catherine Aranyi
L. Robert Artoe
Bert Badillo
Richard N. Bailey
David Gerald Baker
Susann Ball
Randolph & Lorraine Barba
Margaret Basch
Mr. & Mrs. Ron Beata
Mrs. Bill Beaton
Steve Beier
Martha Bell
Daniel J. Bender
Lynn Bennett
Julie Anne Benson
Charles E. & Nancy T. Berg
Joan Israel Berger
Barbara Bermudez
Susan Bernstein
Kyle & Marge Bevers
Patrick J. Bitterman
M. J. Black & Mr. C. Lancy
Richard Blackwell
Dr. Debra Zahay Blatz
Merrill & Judy Blau
Ann Blickensderfer
D. Jeffrey & Joan H. Blumenthal
Marlene R. Boncosky
Mr. & Mrs. John Jay Borland
Ned & Raynette Boshell
David Boyce
Dr. & Mrs. Boone Brackett
Christine & Paul Branstad
Family Foundation
Robert & Phyllis Brauer
Danolda (Dea) Brennan
Daniel A. & Leona B. Bronstein
Carol & Alan Brookes
Kathryn Y. Brown
Richard M. & Andrea J. Brown
Mr.^o & Mrs. Edward H. Bruske III
George F.^o & Linda L. Brusky
Steven & Helen Buchanan
Dr. Gerald & Mrs. Linda Budzik
Lisa Bury
John E. & Alice Butler
Robert J. Callahan
Amy & Paul Carbone
Carla Carstens & Theodore Herr
Patrick Vincent Casali
Dinah Jacobs Castle

Esther Charbit
Jeffrey K. Chase, J.D.
Ramona Choos
J. Salvatore L. Cianciolo
Heinke Clark
Robert & Margery Coen
Elaine Collina
Peter & Beverly Conroy
Sharon Conway
Sarah J. Cooney
Dr. W. Gene Corley Family
Joseph E. Corrigan
Paul T. & Elaine D. Cottey
Una Creditor
Barbara L. Dean
Phyllis Diamond
Roger & Linelle Dickinson
Ms. Janet E. Diehl
Mr. & Mrs. William S. Dillon
Catherine R. DiNapoli
Dr.^o & Mrs. Bernard J. Dobroski
Thomas M. Dolan
Mary Louise Duhamel
Kathleen Dunn
Roma Krystyna Dybalski
Carol A. Eastman
Judy Eckberg
Boyd Edmonston & Edward Warro
Endowment Fund
Lucy A. Elam,
in memory of Elizabeth Elam
Mr.^o & Mrs. Don Elleman
Cherelynn A. Elliott
Terrence M. W. Ellsworth
Dr. James A. Eng
La & Philip Engel
Susanna & Helmut Epp
Erika E. Erich
Mr. & Mrs. James D. Ericson
Dr. & Mrs. James Ertle
Ms. Mary T. Ethier
Marilyn D. Ezri, M.D.
Martha L. Faulhaber
Dr. & Mrs. Paul Y. Feng
Nancy R. Fifield
Felicia Finkelman
Jack M. & Marsha S. Firestone
Eloise C. Foster
Barbara Gail Franch
James Victor Franch
Patricia & Maurice J.^o Frank
Richard J. Franke
Ms. Susan Frankel
Thomas H. Franks, Ph.D.

Allen J. Frantzen
Penny & John E. Freund
Marie & Gregory^o Fugiel
Sheilah Purcell Garcia, Lady Witton
George & Mary Ann Gardner
Scott P. George
Melinda E. Gibson, MD,
in memory of Sylvia M. Morrison
Norden S. Gilbert
John F. Gilmore
Michael Goldberger
Mr. & Mrs. Delmon Grapes
Rick Greenman
Dr. J. Brian Greis
James R. Grimes
Patricia Grogan
Carolyn Hallman
Carl J. Halperin
Mr. Edwin Hanlon
Miss Patricia O. Hanlon
Ms. Geraldine Haracz
Mary Kathryn Hartigan
Julian W. Harvey
Andrew Hatchell
William P. Hauworth
Dr. & Mrs. David J. Hayden
Mr. & Mrs. Thomas C. Heagy
Mrs. Thomas D. Heath
Josephine E. Heindel
Allen W. Heinemann & William Borden
Mary Mako Helbert
Stephanie & Allen Hochfelder
Mrs. Marion Hoffman
Stephen D. Holmes
Edith A. Holst
Mary & Jim Houston
H. Eileen Howard & Marshall Weinberg^o
Sarah & William Hufford
Kenneth N. Hughes
Michael Huskey
Cpt. Bernardo Iorgulescu, USMC
Memorial Fund
Merle Jacob
J. Jeffrey Jaglois
Edgar D. Jannotta
Stanley J. Janowiak
Dr. & Mrs. Todd & Peggy Janus
Barbara Joabson
Diane & Alan Johnson
John Arthur Johnson
Ronald B. Johnson
Roy A. & Sarah C. Johnson

For more information about becoming an Ardis Krainik Society member and the related levels and benefits associated, contact **Mike Biver**, Senior Director of Gift Planning, at **312.827.5655** or **mbiver@lyricopera.org**.

^oDeceased

Barbara Mair Jones
 Janet Jones
 Mr. Theodore Kalogeresis
 Wayne S. & Lenore M. Kaplan
 Kerma & John Karoly
 Kenneth Kelling
 Chuck & Kathy Killman
 Diana Hunt King
 Neil King
 R. William Klein, Jr.
 Laura & LeRoy Klemt
 J. Peter Kline
 Helen Kohr
 Susan Kryl
 Edward & Adrienne Kolb
 Barbara A. Kummerer,
 in memory of Thomas H.
 Kummerer
 Carol & John Kunze
 Mary S. Kurz
 Larry Lapidus
 Barbara K. Larsen
 Angela Larson &
 Bamshad Mobasher
 Thomas & Annelise Lawson

Henrietta Leary
 Dr. & Mrs. Andrew O. Lewicky
 Pamela Forbes Lieberman
 Mrs. Paul Lieberman
 Carole F. Liebson
 Carol L. Linne
 Candace Broecker Loftus
 Doris C. Lorz
 Carolyn Lovering
 Carlotta & Ronald Lucchesi
 Dorette P. S. Luke
 William & Terry Maher
 James C. & Suzette M. Mahneke
 Mr. & Mrs.° Nicholas Malatesta
 Jeanne Randall Malkin
 Ann Chassin Mallow
 Jennifer J. Malpass
 Dr.° & Mrs. Karl Lee Manders
 Allison R. Manley
 Daniel T. Manoogian
 Daniel F. Marselle
 Judy Marth
 Mrs. Elizabeth Upjohn Mason
 Dr. Christine Winter Massie &
 Mr. James Massie

Michael P. Mayer
 Mr. & Mrs. Richard P. Mayer
 Michael M. & Diane Mazurczak
 Mrs. David McCandless
 James G. & Laura G. McCormick
 Gia & Paul McDermott
 Nancy Lauter McDougal
 Blythe Jaski McGarvie
 William F. McHugh
 Bill McVey
 Martina M. Mead
 Mr. & Mrs. Leland V. Meader
 Bill Melamed
 Dr.° & Mrs. Jack L. Melamed
 Mr. & Mrs. Peter M. Mesrobian
 Dr. & Mrs. Joseph Meyers
 Barbara Terman Michaels
 Margaret & Craig Milkint
 Gerry M. Miller
 Michael Miller & Sheila Naughten
 Susan M. Miller
 Mr. & Mrs. William A. Miller
 Edward S. & Barbara L. Mills
 Martha A. Mills
 Vlasta A. "Vee" Minarich

David & Justine K. Mintzer
 BettyAnn Mocek &
 Adam R. Walker
 Robert & Lois Moeller
 Dr. Virginia Saft Mond
 Drs. Bill° & Elaine Moor
 Allan & Elaine Muchin
 Julia Garrofe Munoz
 Mr. & Mrs. Michael E. Murphy
 Ms. Diana K. Myers
 Tom Myles
 David J.° & Dolores D. Nelson
 John H. Nelson
 Edward & Gayla Nieminen
 Zehava L. Noah
 Renate P. Norum
 Patricia A. Noska
 Linda Moses Novak
 Margo & Michael Oberman
 Dr. & Mrs. Frederick Olson
 David & Sheila Ormesher
 Jonathan Orser
 Gerald L. Padbury
 John & Dawn Palmer
 Joan L. Pantsios

For more information about becoming an Ardis Krainik Society member and the related levels and benefits associated, contact **Mike Biver**, Senior Director of Gift Planning, at **312.827.5655** or **mbiver@lyricopera.org**.

°Deceased

Lyric
 OPERA OF
 CHICAGO

Take your place in Lyric history

We hope Lyric holds a permanent place in your heart, and we'd like to offer you a permanent place at Lyric.

Name a seat in the Ardis Krainik Theatre with a personalized brass plaque at the seat of your choosing. It's the perfect way to celebrate an event, remember a loved one, or simply commemorate your love of Lyric.

Learn more at lyricopera.org/nameaseat or call **312.827.5686**.

Todd Rosenberg

Robert W. Parsons, M.D.
 George R. Paterson
 Donald Peck
 George Pepper, M.D.
 Sunday & Charles Perry
 Susanne P. Petersson
 Shirley Pfenning
 Genevieve M. Phelps
 Karen & Dick Pigott
 Robert M. Pine
 Louis A. Pitschmann &
 Lillian A. Clark
 John J. W. Plampin
 Drs. Alan & Carol Pohl
 Ms. Lois Polakoff
 Kenneth Porrello & Sherry McFall
 D. Elizabeth Price
 Nathaniel W. Pusey
 Dr. Sondra C. Rabin
 Mary Raffetto-Robins
 Roberta Lyn Anderson Rains
 Dorothy V. Ramm
 Linda Raschke
 Christina Rashid
 Mr. & Mrs. Keith A. Reed
 Michael & Susan "Holly" Reiter
 Jennie M. Righeimer
 Charles & Marilynn Rivkin
 Carol Roberts
 Sylvie Romanowski
 James & Janet^o Rosenbaum
 J. Kenneth & Susan T. Rosko
 Chatka Ruggiero
 Joseph C. Russo
 Dennis Ryan
 Louise M. Ryssmann
 Eugene Rzym,
 in memory of Adaline Rzym
 David Sachs
 Suzanne & William^o Samuels
 Dr. & Mrs. Anthony J. Schaeffer
 Mary T. Schafer
 Mrs. Philip H. Schaff, Jr.
 Douglas M. Schmidt
 Franklin Schmidt
 Martha P. Schneider
 Ms. Frances A. Schrader
 Donald Seibert
 Sandra Shane-DuBow
 Sherie Coren Shapiro
 Charles Chris Shaw
 Mr. & Mrs. Gordon M. Shaw
 David Shayne
 Jared Shlaes
 Joanne Silver
 Mr. Andrew Barry Simmons &
 Mitchell Loewenthal-Grassini
 Ilene Simmons
 Larry G. Simpson
 Dr. Ira Singer
 Margles Singleton
 Thomas G. Sinkovic

Craig Sirls
 Norman & Mirella Smith
 Mr. Reeves E. Smith
 Joan M. Solbeck
 Mary Soleiman
 Philip & Sylvia^o Spertus
 Ms. Gay K. Stanek
 James Staples
 Sherie B. Stein
 J. Allyson Stern
 Lisbeth Cherniack Stiffel
 Mr. & Mrs.^o James P. Stirling
 Carol A. Stitzer
 Clara Basch Stone
 Dr. & Mrs.^o Peter W. Stonebraker
 Mary Stowell
 Daniel & Norene Stucka
 Mr.^o & Mrs. Glenn L. Stuffers
 Emily J. Su
 Sherwin A. Swartz
 Mr. Charles A. Tausche
 Mr.^o & Mrs. John C. Telander
 Cheryl Lorette Thaxton
 L. Kristofer Thomsen
 Carla M. Thorpe
 Karen Hletko Tiersky
 Myron Tiersky
 Jacqueline Tilles
 Lawrence E. Timmins
 Mrs. William C. Tippens
 Virginia Tobiason
 Paula Turner
 Robert & Gloria Turner
 Paul & Judith Tuszynski
 Ultmann Family Charitable
 Remainder Unitrust
 Cynthia Vahlkamp & Robert Kenyon
 Charitable Trust
 Mike & Mary Valeanu
 Marlene A. Van Skike
 Lorraine & Dave Vander Ark
 David J. Varnerin
 Nancy Johnson Vazzano
 Raita Vilnins
 Malcolm V. Vye, M.D.
 Albert Walavich
 Darcy Lynn Walker
 Gary T. Walther
 Stephen and Karen Walton
 Albert Wang
 Barbara M. Wanke
 Louella Krueger Ward
 Karl Wechter
 Patricia M. Wees
 Claude M. Weil
 Eric Weimer & Edwin Hanlon
 Mr. & Mrs. Arnold Weinberg
 Joan & Marco^o Weiss
 Joanna L. Weiss
 Mrs. Robert G. Weiss
 Mrs. Melville W. Wendell
 Sandra Wenner

Jane B. White
 Claudia Winkler
 Nora Winsberg
 Mr. David Winter
 Florence Winters
 Brien & Cathy Wloch
 Mr. & Mrs. Robert E. Wood II
 Mrs. William Wunder
 Bonnie Zeitlin
 Daniel R. Zillmann

ESTATE GIFTS

The following estates have generously provided gifts of bequests and other planned gifts to Lyric. Due to space limitations, listings include only planned gifts received in the past three years and is current as of March 15, 2023. With deepest regards, Lyric commemorates and remembers those departed Lyric patrons who have honored us with these most-profound commitments.

James S. & Mary-Louise Aagaard
 Donald Alderman
 Judith Anderson
 The Ruth and Roger Anderson
 Family Foundation
 Dorothy Avedisian
 Constance & Liduina Barbantini
 Dr. Michael O. Blackman
 Dr. Gregory L. Boshart
 Judy Bober
 Joan Brugger
 Jacqueline Brumlik
 Dr. Mary Louise Hirsh Burger &
 Mr. William Burger
 Muriel A. Burnet
 Wiley Caldwell
 David Carpenter
 Charles Putnam Case
 June Choate
 Ellen Clasen
 Ellen Cole Charitable
 Remainder Trust
 Colman Family Foundation
 James Compton
 Barbara K. DeCoster
 Mrs. Campbell de Frise
 Victoria Defty
 George Devron
 Azile Dick
 Thomas Doran
 Richard L. Eastline
 Joseph R. Ender
 Nadine Ferguson
 Roy Fisher
 Rhoda & Henry Frank
 Mary Patricia Gannon
 Mrs. John Wilburn Garland
 Lyle Gillman
 Robert D. Gray
 Mary Elizabeth Mako Helbert
 Elsie Heyler
 Rebecca Jarabak
 Judy Jasper
 Laurence P. Johnson
 Elsy Janet Jones
 Dr. Anne Juhasz
 Robert & Jeanne Kapoun
 Esther Klatz
 Nancy W. Knowles
 Karen J. Kuehner
 Dr. William R. Lawrence
 Rosalie Loeding
 Hugo Lorenz
 Dr. Alexis W. Maier Trust
 Iris Maiter
 Bella G. Malis
 Mrs. John Jay Markham
 Robert Marks
 Dr. Jack Melamed
 Susan Messenger
 J. Clifford Moos
 Rosemary Murgas
 Charitable Living Trust
 David Nelson
 Sydelle F. Nelson
 Florence C. Norstrom
 Louis A. Nyman
 Irma Parker
 Dr. Frances Pietch
 Sherrie Kahn Reddick
 Lyn & Bill Redfield
 Mary Lee Reed
 Joan Richards
 Evelyn R. Richer
 Jadwiga Roguska-Kyts, M.D.,
 in memory of Robert Kyts
 Richard P. Schieler
 Lois Schmidt
 Caroline Seabright
 Lois B. Siegel
 Del Snow
 Elaine Soter
 Suzanne and Karl Stein
 Franklin R. St. Lawrence
 Barry Sullivan
 Janis Sullivan
 Peggy Sullivan
 Miriam Swanson
 David Thurn
 Maureen Tokar
 Dorothy Vance
 Joseph & Elizabeth Walczak
 Josephine V. Wallace
 Marilee Wehman
 Caroline Wheeler
 Max & Joyce Wildman
 Rita A. Zralek

Corporate partnership

Lyric appreciates the generosity of its corporate partners.

ARIA SOCIETY

\$1,000,000 and above



\$500,000 to \$999,999



\$250,000 to \$499,999



\$100,000 to \$249,999



VIRTUOSO CIRCLE BENEFACTORS

\$75,000 to \$99,999



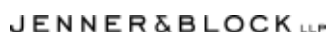
MAESTRO CIRCLE BENEFACTORS

\$50,000 to \$74,999



ARTIST CIRCLE BENEFACTOR

\$25,000 to \$34,999



PREMIER PATRONS**\$15,000 to \$24,999**

Exelon
 McMaster-Carr Supply
 Company
 Wintrust Community Banks

DISTINGUISHED PATRONS**\$10,000 to \$14,999**

Amsted Industries Foundation
 Baird
 Crowe LLP
 Italian Village Restaurants
 KPMG LLP
 Mayer Brown LLP

PATRONS**\$5,000 to \$9,999**

BNSF Railway Foundation
 Chicago Title and Trust
 Company Foundation
 Fifth Third Bank
 Sahara Enterprises, Inc.

PARTNERS**\$4,000 to \$4,999**

Howard & Howard Attorneys
 PLLC
 Michuda Construction, Inc.
 Sidley Austin LLP

DEVOTEES**\$3,000 to \$3,999**

American Agricultural
 Insurance Company

ADVOCATES**\$2,000 to \$2,999**

Innis Law Group
 Old Republic International
 Corporation
 Shure Incorporated
 Skadden

AFICIONADOS**\$1,000 to \$1,999**

Concierge Unlimited
 International
 Bumper Lanes Marketing

MATCHING GIFTS

AbbVie
 Allstate Giving Campaign
 Bank of America Foundation
 Benevity Community Impact
 Fund
 Boston Consulting Group
 BP Matching Funds Programs
 Caterpillar Foundation Inc.
 Charityvest
 Cybergrants
 Emerson Electric Company
 Exelon Foundation
 GE Foundation
 HSBC - North America
 IBM Corporation
 ITW Foundation
 JPMorgan Chase Foundation
 Kirkland & Ellis
 John D. and Catherine T.
 MacArthur Foundation
 Motorola Foundation
 Network for Good
 Peoples Gas
 PepsiCo Foundation
 PNC Foundation
 Polk Bros. Foundation
 Salesforce
 Synchrony Bank
 Texas Instruments Foundation
 TIFF Charitable Foundation
 United Way Metro Chicago
 US Bank
 W. W. Grainger, Inc.
 William Blair
 YourCause

SPECIAL THANKS

American Airlines for its
 40-year partnership as the
 Official Airline of Lyric Opera
 of Chicago.

Willkie Farr & Gallagher and
 Craig C. Martin, Chairman,
 Midwest, for the firm's pro
 bono legal services throughout
 the year.

Warner Classics as the Official
 Education and Promotion
 Music Provider.

IN-KIND GIFTS

American Airlines, Inc.
 Brush Creek Ranch
 Coco Pazzo
 Crain-Maling Foundation
 Dentons US LLP
 Fellowes, Inc.
 Mr. & Mrs. Jerry K. Pearlman
 PianoForte
 The Rhapsody Theater
 Shure Incorporated

Lyric Opera of Chicago
 acknowledges support from
 the Illinois Arts Council
 Agency.

Lyric Opera of Chicago is a
 member of OPERA America.

To learn more about corporate partnership opportunities, please contact **Anna Mattson**,
 Vice President of Development at amattson@lyricopera.org or **312.827.5683**.

This list includes donors whose gifts or pledges were received by March 15, 2023.

CAPITAL GIFTS

Lyric is deeply grateful to the following donors for recent capital pledges and gifts that enhance the patron experience, maintain the beauty of our landmark opera house, and enable the magic on our stage.

Irma Parker Estate

Elevator renovation project through
 the Capital Improvement Initiative Fund

Anonymous

Theatre seat renovation through
 the Patron Accessibility Initiative

The Crowe Family

Glass curtain project for enhanced
 climate control for patron comfort
 through the Capital Improvement
 Initiative Fund

Annual individual and foundation support

Lyric recognizes and appreciates gifts to its operating campaign made by generous individuals, foundations, and government organizations. Their continued support is vital.

ARIA SOCIETY \$1,000,000 and above

ANONYMOUS DONORS (2)



Julie and Roger Baskes



THE NEGAUNEE FOUNDATION

\$500,000 to \$999,999



The Butler Family Foundation
John & Alice Butler



The Crown Family

THE DAVEE FOUNDATION



Gael Neeson & Stefan Edlis^o



Sylvia Neil & Daniel Fischel



J. Christopher and Anne N. Reyes
Foundation



Patrick G. & Shirley Welsh Ryan



Robert and Penelope Steiner
Family Foundation



Lisbeth Stiffel

\$250,000 to \$499,999

Abbott Fund



Marlys A. Beider



David W. Carpenter and Orit K. Carpenter, in loving memory of David W. Carpenter

GRAMMA FISHER FOUNDATION OF MARSHALLTOWN, IOWA



Julius Frankel Foundation



Mr. & Mrs. Dietrich M. Gross



John R. Halligan Charitable Fund



Mr. & Mrs. Sanfred Koltun



Josef & Margot Lakonishok



Lauter McDougal Charitable Fund
Fred° & Nancy McDougal



Nancy S. Searle



Zell Family Foundation

° Deceased

\$100,000 to \$249,999

ANONYMOUS
DONORS (4)



Mrs. James S. Aagaard^o

PAUL M. ANGELL
FAMILY FOUNDATION



Randy L. & Melvin R.^o
Berlin



Marion A. Cameron-
Gray



Amy & Paul Carbone



Elizabeth F. Cheney
Foundation



Mrs. John V. Crowe



Sonia Florian



Rhoda and Henry Frank
Foundation



Ethel & William Gofen



Howard L. Gottlieb &
Barbara G. Greis



James & Brenda
Grusecki



The Harris Family Foundation
*Caryn & King Harris and
Pam Friend Szokol*



Annie & Gregory K.
Jones



Julian Family
Foundation

MIKE & LINDY
KEISER

THE RICHARD P.
& SUSAN KIPHART
FAMILY



The Knowles Foundation
Nancy W. Knowles^o



Mr.^o and Mrs. Fred A.
Krehbiel



Karen Z. Gray-Krehbiel &
John H. Krehbiel, Jr.



Philip G. Lumpkin



Jim^o & Kay Mabie

\$100,000 to \$249,999

Continued



MAKE IT BETTER MEDIA GROUP



Mazza Foundation
Joseph O. Rubinelli, Jr., Mary Jane Rubinelli, Nicholas J. Lavezzorio, & Joan Lavezzorio Schniedwind



Susan & Robert Morrison



Allan & Elaine Muchin

NATIONAL ENDOWMENT for the ARTS
arts.gov



Jerome and Elaine Nerenberg Foundation



John D. & Alexandra C. Nichols



Mr. & Mrs. William A. Osborn



Patricia A. Kenney & Gregory J. O'Leary

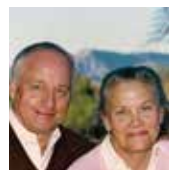
PENNY PRITZKER & BRYAN TRAUBERT



Richard O. Ryan



Mr. & Mrs. Scott Santi



Dr. Scholl Foundation
Jack^o & Catherine Scholl^o

PETER SCHEUERMANN



Lois B. Siegel^o



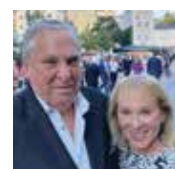
Donna Van Eekeren Foundation



Mr. & Mrs. William C. Vance and Mrs. Herbert Vance^o
Carol & William Vance



Roberta L. Washlow & Robert J. Washlow



Morris Silverman & Lori Ann Komisar

^oDeceased

**VIRTUOSO CIRCLE
BENEFACTOR**

\$75,000 to \$99,999

Robin Angly & Miles Smith
David Q. & Mary H. Bell
Eisen Family Foundation
Mr. & Mrs. Charles K. Huebner
Martha C. Nussbaum
OPERA America
The C. G. Pinnell Family
Susan M. Ruder
Ms. Gay K. Stanek
Mary Stowell

**MAESTRO CIRCLE
BENEFACTOR**

\$50,000 to \$74,999

Anonymous Donors (3)
Dr. & Mrs. Arthur J. Atkinson, Jr.
The Beaubien Family
The Brinson Foundation
Henry M. & Gilda R. Buchbinder
Family
Joya Caryl
The Chicago Community Trust
Sarah Crane
Nancy Dehmow
Ann M. Drake
James & Deborah Fellowes
Amanda C. Fox
Maurice° & Patricia Frank
Sue & Melvin Gray
Walter E. Heller Foundation
Martha A. Hesse
The Joyce Foundation
Mr. & Mrs. Keith Kizziah
Rebecca & Lester Knight
Victoria Mitchell Kohn
Dr. & Mrs. Mark F. Kozloff
Mrs. Fred Krehbiel
Chauncey & Marion D.
McCormick Family
Foundation
Polk Bros. Foundation
Betsy & Andy Rosenfield
Sage Foundation
Earl & Brenda Shapiro
Foundation
Ilene & Michael Shaw
Charitable Trust
Rose L. Shure & Sidney N. Shure
Bill & Orli Staley Foundation
Gene & Jean Stark
Michael Steinberg &
Salme Harju Steinberg
Mira Frohnmayer &
Sandra Sweet
Thierer Family Foundation
Walter Family Foundation

**COMPOSER CIRCLE
BENEFACTOR**

\$35,000 to \$49,999

Ross° & Patricia D. Bender
Molly & Roman Boed
Dr. & Mrs. Thomas A. Broadie
Greg & Mamie Case
Mr. & Mrs. Michael P. Cole
Vinay Couto & Lynn Vincent
Lloyd A. Fry Foundation
Virginia & Gary Gerst
Carolyn Hallman
The Edgar D. Jannotta Family
Stephen A. Kaplan
Rosalie Loeding
Blythe Jaski McGarvie
Frank B. Modruson &
Lynne C. Shigley
Mr. & Mrs. Lee Oberlander
Segal Family Foundation
Mr. & Mrs. James M. Trapp

**ARTIST CIRCLE
BENEFACTOR**

\$25,000 to \$34,999

Anonymous Donors (3)
Ken & Amy Aldridge
Hubert L. Allen & Hau Chyi
Paul & Mary Anderson
Robert & Isabelle Bass
Foundation, Inc.
Mrs. James N. Bay
Diane & Michael Beemer
C. Bekerman, M.D.
Norman & Virginia Bobins/
The Robert Thomas Bobins
Foundation
Fred & Phoebe Boelter
Heidi Heutel Bohn
Buehler Family Foundation
Maree Bullock
Mr. & Mrs. Andrew Butler
Cellmer/Neal Foundation Fund
Joyce E. Chelberg
Lawrence O. Corry
Crain-Maling Foundation
Pamela Crutchfield
Marsha Cruzan &
Tom McGinnis
Michael J. Cushing
Anne Megan Davis
Cate & Jim Denny
Mr. Charles Droegge &
Ms. Julie A. Wroblewski
Drs. George & Sally Dunea
Elaine S. Frank Fund
Mr. & Mrs. Eugene F. Fama
Timothy R. Farrell
The Recording Industry's
Music Performance Trust
Fund
David & Janet Fox
Dr. Paul A. Froeschl
Mary Patricia Gannon

Ambassador & Mrs. Ronald J.
Gidwitz
Ruth Ann M. Gillis &
Michael J. McGuinnis
Dan & Caroline Grossman
Mary Ellen Hennessy
Sandra Hoffman
Mr. & Mrs. Wayne J. Holman III
James & Mary Houston
The Jentes Family Foundation
George E. Johnson
Joseph M. Kacena Endowed
Fund
Mr. & Mrs. Neil T. Kawashima
Stephen Kohl & Mark Tilton
Silvia Beltrametti Krehbiel &
Jay Krehbiel
Mr. Thomas V. Linguanti &
Ms. Olivia Tyrrell



There are moments in opera
performances that touch
and humanize us.

Michael H. and Nancy R.

Robert & Evelyn McCullen
Mr. & Mrs. Andrew J.
McKenna°
Susan M. Miller
Mr. & Mrs. Todd D. Mitchell
Brendan & Suzanne Mulshine
Arthur C. Nielsen, Jr. Family
Charitable Trust
Drs Olufunmilayo &
Christopher Olopade
Matt & Carrie Parr
Ingrid Peters
Karen Petite
Dr. Petra & Mr. Randy O.
Rissman
Hartley Rogers
Erica L. Sandner
Sargent Family Foundation
Barbara & Barre Seid
Foundation
Marsha Serlin & Jerry Sloan
Charles & M.R. Shapiro
Foundation, Inc.
Richard W. Shepro &
Lindsay E. Roberts
Kevin & Dana Smith
Cherryl T. Thomas
Virginia Tobiason
Robert L. Turner
Cynthia Vahlkamp &
Robert Kenyon
Mrs. J. W. Van Gorkom
Mr. & Mrs. Richard G.
Weinberg

Dr. David H. Whitney &
Dr. Juliana Chyu
Drs. Joan & Russ Zajtchuk
Anne Zenzer &
Dominick DeLuca

**PREMIER PATRON
\$15,000 to \$24,999**

Anonymous Donors (5)
Richard Abram &
Paul Chandler
John & Ann Amboian
Mr. & Mrs. Stuart Applebaum
Ms. & Mr. Rana & Albert Baladi
The Barker Welfare Foundation
Judith Barnard & Michael Fain
Mr. & Mrs. Ron Beata
Mr. & Mrs. Merrill E. Blau
Dr. & Mrs. Mark Bowen

Winston & Lally Brown
Rosemarie & Dean L. Buntrock
Dr. Young Chung Family
Thomas A. Clancy &
Dana I. Green
Ann Coleman
Susan E. Cremin & Paul Dykstra
Dan Draper
Allan Drebin
Fred L. Drucker & Hon. Rhoda
Sweeney Drucker
Stephen Dunbar
Donald & Anne Edwards
Erika E. Erich
Lafayette J. Ford
Helyn D. Goldenberg
Mr. Jack Graber
Lee Graber
Maria C. Green &
Oswald G. Lewis
Dr. Judith & Mr. Mark C. Hibbard
John Holmes & Jenni Sorenson
Joel Horowitz
Ronald B. Johnson
Mr. & Mrs. L. D. Jorndt
Mr. & Mrs. Robert E. King
Dr. M.S.W. Lee
Laurel Appell Lipkin
Mr. David Marshall &
Dr. Maija Freimanis
Terry J. Medhurst
Dhun Mehta
Martha A. Mills
Charles Morcom

Linda K. & Dennis M. Myers
 Jean McLaren & John Nitschke
 Margo & Michael Oberman
 & Family
 Mr. & Mrs. Brian & Tammi O'Dea
 Julian Oettinger
 Sheila & David Ormesher
 Mr. & Mrs. Bruno Pasquinelli
 Marian Phelps Pawlick
 Dick Pines
 Sherry McFall &
 Kenneth Porrello
 D. Elizabeth Price
 Irene D. Pritzker
 Hon. S. Louis Rathje &
 Maria Rosa Costanzo
 Candy & Gary Ridgway
 John W. & Jeanne M. Rowe
 Mary Beth Shea
 Elizabeth S. Sheppard
 The George L. Shields
 Foundation, Inc.
 Louis & Nellie Sieg Fund
 Craig Sirles
 Mark Tatro & Margarita
 Chavez-Tatro
 Christian Vinyard
 Cheryl Walczak
 Hilary & Barry Weinstein
 Family Foundation
 Mr. & Mrs. Robert E. Wood II
 Debbie K. Wright
 John & Evonne Yonover

DISTINGUISHED PATRON
\$10,000 to \$14,999

Anonymous Donors (12)
 Katherine A. Abelson
 Alexander & Alexander,
 Attorneys at Law
 Mr. & Mrs. Daniel P. Arras
 Mr. & Mrs. Larry A. Barden
 Paul & Robert Barker
 Foundation
 Ron & Queta Bauer
 Mr. & Mrs. George Bayly
 Mark & Judy Bednar
 Mr. & Mrs. D. Theodore
 Berghorst
 Mr. & Mrs. Turney P. Berry
 Kathleen L. Betterman
 Mr. & Mrs. John Jay Borland
 Helen Brach Foundation
 John & Rosemary Brown
 Family Foundation
 Drs. Walter & Anne-Marie
 Bruyninckx
 Joy Buddig
 Marie Campbell
 Lynd W. Corley
 Sam Crews
 Mrs. Marcia W. Dam
 Dr. & Mrs. Tapas K. Das Gupta
 Decyk Charitable Foundation

Shawn M. Donnelley &
 Christopher M. Kelly
 Richard & Ingrid Dubberke
 Bernard T. Dunkel
 Hon. Frank Easterbrook &
 Mrs. B. Englert Easterbrook
 Richard B. Egen
 Susanna & Helmut Epp
 Dr. & Mrs. James O. Ertle
 Mr. & Mrs. Stephen Etherington
 Marilyn D. Ezri, M.D.
 Jessen Family in Memory of
 Howard E. Jessen & Susanne
 C. Jessen
 The Ferguson-Yntema Family
 Charitable Trust
 Kathleen Field Orr
 Robert F. Finke
 Theresa M. Forsythe
 Mr. Steven L. Fradkin
 Mr. & Mrs. James V. Franch
 Dr. & Mrs. James L. Franklin
 Don° & Abby Funk
 Carl A. & Fern B. Gaensslen
 Charitable Giving Fund
 Ms. Elisabeth O. Geraghty
 Mary & Lionel Go
 Bruce Gober, M.D.
 Judy & Bill Goldberg
 Mr. Gerald & Dr. Colette Gordon
 Phillip & Norma Gordon
 Chester A. Gougis &
 Shelley Ochab
 David & Elizabeth Graham
 Mrs. Mary Winton Green
 James R. Grimes
 Daniel Groteke & Patricia Taplick
 Anders & Donna Gustafsson
 Joan M. Hall
 Dr. James° & Mrs. Susan
 Hannigan
 Joan W. Harris
 John Hart & Carol Prins
 Mr. & Mrs. Julian W. Harvey
 Lynn Hauser & Neil Ross
 Mrs. Thomas D. Heath
 Dr. Nora Jaskowiak &
 Mr. Matthew Hinerfield
 Anne P. Hokin
 Cynthia & Ron Holmberg
 Linda Samuelson & Joel Howell
 Capt. Bernardo Iorgulescu,
 USMC Memorial Fund
 Laurie & Michael Jaffe
 Dr. Carolyn & Dr. Paul Jarvis
 Sarah & Kip Kelley II
 Elizabeth Khalil &
 Peter Belytschko
 Mr. & Mrs. LeRoy C. Klemt
 Dr. Katherine Knight
 MaryBeth Kretz & Robert Baum
 Albert & Rita Lacher
 Jeanne LaDuke
 Phillip Lehrman

Lemont Fund
 Michael A. Leppen
 Dr. Zafra Lerman
 Bernard° & Averill Leviton
 Mrs. Paul Lieberman
 Mr. & Mrs. Lawrence Mages
 Francine Manilow
 Mr. & Mrs. Robert S. &
 Sandra E. Marjan
 Shari Mayes
 Mr. & Mrs. James A. McClung
 Judith W. McCue &
 Howard M. McCue III
 Erma S. Medgyesy
 Drs. Bill° & Elaine Moor
 Corinne S. Morrissey
 Ms. Cheryl G. Murer
 Mr. & Mrs. Michael E. Murphy
 Phyllis Neiman
 John Nigh
 Carol "Mickey" Norton
 Cindy Pan & Eric Easterberg
 Pat & Lara Pappas
 Mr. & Mrs. Greg Pearlman
 The Family of Seymour H.
 Persky
 Harvey R. & Madeleine P.
 Plonsker



Lyric is one of the crown jewels of
 Chicago. Having a world-class opera
 helps make us a world-class city, and
 I enjoy being part of something that
 does that.

Eitan A.

Mr. & Mrs. Stephen Potter
 Rosy & Jose Luis Prado
 Andra & Irwin Press
 Mrs. Diana Prince
 Bonnie Pritchard
 The Reid-Anderson Family
 Mr. & Mrs. William Revelle
 Burton X. & Sheli Rosenberg
 Mr. Paul Earle &
 Ms. Ellen Rudnick
 Carol Sonnenschein Sadow
 George & Terry Rose Saunders
 Curt G. Schmitt
 Alan Schriesheim &
 Kay Torshen
 Mr. & Mrs. Richard J. L. Senior
 Surendra & Dorothea Shah
 Mr. & Mrs. Alejandro Silva
 Adele Simmons
 Larry G. Simpson

The Siragusa Family Foundation
 Patricia Arrington Smythe
 Joan M. Solbeck
 The Solti Foundation U.S.
 Jim Stirling
 Dr. Peter W. Stonebraker &
 Denise Axtell
 Mr. & Mrs. Harvey Struthers
 Dr. & Mrs. Arnold Tatar
 Angela Tenta, M.D.
 Mr. O. Thomas Thomas &
 Mrs. Sandra Inara Thomas
 Ms. Carla M. Thorpe
 Mr. M. Medgyesy
 Mr. & Mrs. Robert W. Turner
 Mrs. Henry Underwood
 Elizabeth Upjohn Mason
 Mr.° & Mrs. Peter Van Nice
 Scott D. Vandermyde
 David J. Varnerin
 Albert R. Walavich
 Dan & Patty Walsh
 Alan & Harriet Weinstein
 Kim° & Miles D. White
 Dr. & Mrs. Peter Willson
 Marsha & David Woodhouse
 Priscilla T. Yu

PATRON
\$5,000 to \$9,999

Anonymous Donors (10)
 Mr. & Mrs. William Adams IV
 Mr. Gerald Adelman
 Mr. & Mrs. Gary R. Allie
 Dr. & Mrs. Robert Arensman
 Norma Armon
 Richard & Harriet Arons
 Susan & Bob Arthur
 Peter & Lucy Ascoli Family Fund
 Margaret Atherton &
 Robert Schwarz
 Robert S. Bartolone
 Patrick J. Bitterman
 Michael L. Boykins
 Mr. & Mrs. James Bramsen
 Danolda (Dea) Brennan
 Mr. & Mrs. Allan Bulley, III
 Raymond Capitanini

Chapters' Executive Board
 Mrs. Warren M. Choos
 Heinke K. Clark
 Dr. Walter S. Melion &
 Dr. John M. Clum
 Mr. & Ms. Douglas Cohen
 Jane B. Colman
 Francesca Cornelli &
 Stuart Bradley
 Laura Cox
 The Cozad Family
 Gerry & Randee Curciarello
 The Dancing Skies Foundation
 Mr. & Mrs. Avrum H. Dannen
 Harry° & Marianne Dennis
 Dr. & Mrs. Anthony
 DiGianfilippo
 John Edelman & Suzanne Krohn
 Miss Gay Elfline
 Mr. & Mrs. Rick Erwin
 Anita D. Flournoy
 Adrian Foster
 Judy Friedman
 Ms. Lili Gaubin
 Gerald & Michal Ginsburg
 Gay L. Girolami
 Mr. & Mrs. Stanford Goldblatt
 Mr. Jack Gorby
 Peter Gotsch
 Mr.° & Mrs. Paul Gray
 Mr. & Mrs. Richard Gray
 Greene Family Foundation
 Mr. & Mrs. Heinz Grob
 Glen & Claire Hackmann
 The Blanny A. Hagenah
 Family Fund
 Mrs. John M. Hartigan
 Mr. & Mrs. Thomas C. Heagy
 Dr. & Mrs. Arthur L. Herbst
 Kimberlee S. Herold
 Hinsdale Chapter
 Mrs. Richard S. Holson, Jr.
 Michael & Leigh Huston
 Merle L. Jacob
 Ronald & Bett Jacquart
 Regina Janes
 Mary Ann Karris
 Judith L. Kaufman
 Nancy Rita Kaz
 Marian Kinney
 Ms. Sheila Kirscher & Mr. John
 Kirscher
 Thomas A. Kmetko &
 Rafael Leon
 Dr. & Mrs. Sung-Tao Ko
 Eldon & Patricia Kreider
 Dr. & Mrs. Ken N. Kuo
 Lake Geneva Chapter
 Mr. Craig Lancaster &
 Ms. Charlene T. Handler
 Mr. & Mrs. Stephen Lans
 Jeffrey & Elise Lennard
 Anne & Craig Linn
 Knox & Gabrielle Long

Dorette Luke
 Jennifer Malpass
 Laura & Craig Martin
 Mr. Donald Maves
 Mr. & Mrs. Richard P. Mayer
 Gerard & Kathleen Maynard
 John & Etta McKenna
 Sheila Medvin
 Bill Melamed & Jamey Lundblad
 Lois Melvoin
 Ms. Britt M. Miller
 David E. Miller
 Mary Lou & Jack Miller
 Mr. & Mrs. Christopher Milliken
 Mr. & Mrs. Charles Moore
 Drs. Robert & Marsha Mrtek
 Rosemary Murgas Charitable
 Living Trust
 Chris & Eileen Murphy
 Near North Chapter
 David J. & Dolores D. Nelson
 Zehava L. Noah
 Renate P. Norum
 Mr. & Mrs. James J. O'Connor
 Mr. & Mrs. Donald Patterson
 Jean Perkins & Leland
 Hutchinson
 Mr. Jeffrey Pickus &
 Ms. Mary C. Downie
 Jim & Polly Pierce
 Pritzker Pucker Family
 Foundation
 Mrs. Jay Pritzker
 Jennifer N. Pritzker
 Alyssa and Burke Raine
 Dennis C. Regan
 Charles & Marilynn Rivkin
 Carol Roberts
 Mr. & Mrs. Ronald A. Rolighed
 Ms. Mary Rundell
 Norman Sackar
 Ms. Judith A. Sandstrom &
 Mr. Peter Kohn
 Ms. Inez Saunders
 Karla Scherer
 Judy & David Schiffman
 Ilene Simmons
 Dr. & Mrs. R. John Solaro
 Ardath & Connie Solsrud
 James A. Staples
 Mr. Edwin Stebbins &
 Mr. Richard Stebbins
 Dusan Stefoski & Craig Savage
 Doris F. Sternberg
 Ralph & Sally Stoll
 Roger & Susan Stone Family
 Foundation/Jennifer Stone
 Michael & Damona Strautmanis
 MinSook Suh
 Andrea & Mark Taylor
 L. Kristofer Thomsen
 Mrs. Theodore D. Tieden
 Mr. & Mrs. Richard P. Toft
 Ksenia A. & Peter Turula

Aris Urbanes & Bill Hulsker
 Frances & Peter Vandervoort
 Raita Vilnins
 Matthew Wald
 Gary T. Walther
 Benjamin Wasmuth
 Pam & David Waud
 Dr. Catherine L. Webb
 Marilee & Richard Wehman
 Michael Welsh &
 Linda Brummer
 Floyd & Judith W. Whellan
 Howard S. White
 Mr. & Mrs. Richard Williams
 Stephen R. Winters
 Mark & Randi Woodworth
 Mr. & Mrs. Michael Woolever
 Mr. Richard Wren
 Owen & Linda Youngman

PARTNER
\$4,000 to \$4,999
 Anonymous Donors (2)
 Ms. Jane Ambler
 Sandra M. Bass
 Mr. & Mrs. Andrew K. Block
 John Blosser
 Susan Burkhardt
 Dr. Peter & Beverly Ann Conroy
 Mr. & Mrs. Charles G. Denison
 Stephen & Rosamund Forrest
 John Anthony Gable &
 Zoe Quan
 Annemarie H. Gramm
 Dr. Ruth Grant &
 Dr. Howard Schwartz
 Ms. Diana Guarin
 Stephen D. Holmes
 Dr. & Mrs. Todd & Peggy Janus
 Marc & Franziska Lacher
 Stavros Maltezos
 Mrs. John H. McDermott
 Patricia Mitchell
 Dr. Joe Piszcior
 Mrs. Elke Rehbock
 Saul & Sarah Rosen
 Dr. Itai Seggev &
 Dr. Dara Goldman°
 Sherie Coren Shapiro
 Bill & Harlan Shropshire
 Ross A. Slotten & Ted Grady
 Oscar Tatosian, Jr.
 Gayle & Glenn R. Tilles
 Phil & Paula Turner
 Suzanne L. Wagner
 Mr. & Mrs. Brien Wloch
 Sarah R. Wolff &
 Joel L. Handelman

DEVOTE
\$3,000 to \$3,999
 Anonymous Donors (6)
 Louise Abrahams
 Peri M. Altan

Drs. Vijayalakshmi &
 Bapu Arekapudi
 Mr. & Mrs. Robert D. Baldwin
 Barbara Barzansky
 Bastian Voice Institute
 Daniel J. Bender
 Ms. Bernice Bigelow
 Ms. Sheila Burke
 Stephen H. Carr &
 Virginia McMillan Carr
 Mr. Henry Clark &
 Mrs. Elizabeth Simon
 Elaine Collina
 Ms. Elaine Cue
 Robert Curley
 Hon. Barbara Flynn Currie
 Rathin Datta
 Ms. Sarah Demet
 Mr. & Mrs. Stephen Diamond
 Bernard J. & Sally Dobroski
 Susan Duehl
 Chere Lynn A. Elliott
 Deane Ellis
 Thomas & Jean Evans
 Suja Finnerty
 Marvin Fletcher
 Ms. Irene M. Fox
 Arthur L. Frank
 Gary & Denise Gardner
 Patricia H. Gates
 Nancy S. Gerrie
 Motoko Goto
 Mary E. Hallman
 Mr. & Mrs. M. Hill Hammock
 Dr. & Mrs. David Jerome Hayden
 Mrs. O. J. Heestand, Jr.
 Dr. Allen W. Heinemann &
 Dr. William Borden
 Humanist Fund
 John G. & Betty C. Jacobs
 Ms. Marian Klaus
 Tod Kovara
 Erica Kuhlmann
 Lannan Foundation
 Leslie Fund, Inc.
 Pamela Forbes Lieberman
 Melvin R. Loeb
 Bob & Doretta Marwin
 Marilyn McCoy &
 Charles R. Thomas
 Martina M. Mead &
 Michael T. Gorey
 Mr. & Mrs. Gregory L. Melchor
 Pamela G. Meyer
 Mr. & Mrs. Craig R. Milkint
 Mr. & Mrs. William A. Miller
 John H. Nelson
 Carol M. Nigro
 Penny J. Obenshain
 Jonathan F. Orser
 Sandra & Michael Perlow
 Karen & Richard Pigott
 Mary & Joseph Plauche
 Dr. & Mrs. Alan Pohl

Mr. Tim Pontarelli
Edward & Leah Reicin
Riverside Chapter
Chatka & Anthony Ruggiero
Dr. Cynthia J. Sanders
Mr. & Mrs. Michael T. Sawyier
Dr. Phyllis W. Shafron &
Mr. Ethan Lathan
Mrs. Charles Shea
Ms. Fay Shong &
Mr. Tracy Mehr
Tracy Singer
Geoffrey Smith &
Catherine Stewart
Ms. Catherine E. Stewart
Pam & Russ Strobel
Walter & Caroline Sueske
Charitable Trust
Geraldine L. Szymanski
Mr. Charles Todd &
Mr. Mario Cervantes
Marisela Varela, MD
Kathryn Voland-Mann &
Robert Mann
Louis Weber
G. Marc & Tracy S. Whitehead
Claudia Winkler
F. C. Winters

ADVOCATE**\$2,000 to \$2,999**

Anonymous Donors (5)
Mr. & Mrs. Richard Aaron
Andrew Abbott &
Susan Schlough
Ginny Alberts-Johnson &
Lance Johnson
Duncan Alexander & Kit Keane
Mrs. Judy Allen
Ms. Mary C. Allen
Evelyn Alter
Ms. Joanne B. Alter
Ms. Jill Althage
Patricia Ames
Ms. Maribeth Babler
William & Marjorie Bardeen
Barrington & Northwest
Suburban Chapter
Jennifer Baryl
Elizabeth Beck
Mr. & Mrs. William E. Bible
Mrs. Arthur Billings
Mrs. John R. Blair
Ann Blickensderfer
Mr. & Mrs. Albert H. Bloom
Ms. Virginia Boehme
Dr. H. Constance Bonbrest
Laurence & Patricia Booth
Mrs. Fred Bosselman
Richard Boyum & Louie Chua
Giovanna & Joseph Breu
Daniel A. & Leona B. Bronstein
Ms. Kathryn Y. Brown
Mrs. Carol Brusslan

Bryan Burgett
Meghan & Dan Burns
Ms. Pamela A. Cabeen
Christopher Carlo &
Robert Chaney
James W. Chamberlain
Sei Ok Oh Chung
Ms. Nancy J. Clawson
Jean M. Cocozza
Mrs. Christina Collins
Stevie Conlon & Sue Skau
Gary Crosby
Marilyn & Terry Diamond
Kathy Dunn
Barbara & John^o Eckel
Hugh & Jackie Edfors
Mr. & Mrs. Richard Elden
Mr. & Mrs. Kevin Evanich
Jim & Elizabeth Fanuzzi
Mr. & Mrs. John H. Faulhaber
Mr. William R. Fenner
Firestone Family Foundation
Mr. & Mrs. Lewis Flint
Mr. Lance Fortnow
Franklin Philanthropic
Foundation
Dr. Lucy Freund
Penny Friedman
Gaylord & William Gieseke
Mr. & Mrs. John Ginascol
Glencoe-Wilmette Chapter
Cai Glushak & Martin DiCrisci
Barbara & Norman Gold
Alfred G. Goldstein

Dr. Deirdre Dupre &
Dr. Robert Golub
Jerry Goodman
Dr. Steven A. Gould
Solomon Gutstein
Allen & Vivian Hager
Clay & Claire Hardon
Dr. & Mrs. Robert Heidenry
Robert & Raynelle Heidrick
Dr. & Mrs. Charles W. High
Ms. Elizabeth Hoffman
Jackie & James Holland
Mr. Thomas Hudak
Robert & Sandra Ireland
Hiromi Ishikawa
Charlene Jacobsen
Kirk, Cheryl & Hannah Jaglinski
Jerry & Judy Johansen
Mr. & Mrs. John Arthur Johnson
Dr. Sara Junya
Drs. Perry & Elena Kamel
Wayne S. & Lenore M. Kaplan
Larry M. Keer, M.D.
Dr. Joon Kim MD
Mr. & Mrs. Joe King
Diana & Neil King
Mr. & Mrs. Robert E. King
Frank & Alice Kleinman
Mary Klyasheff

James K. Genden^o &
Alma Koppedraijer
Richard Kron & Deborah Bekken
Thomas P. Kuczwar
Markian J. Kuzycz, MD
Peter N. Lagges, Jr.
Ms. Nataskia S. Lampe
Howard & Carolyn Sue Landon
Frederic S. Lane
Dr. & Mrs. Alan Leff
Mr. & Mrs. Thomas M. Leopold
Barry Lesht & Kay Schichtel
Lloyd R. Loback
Craig & Jane Love
Ms. Kurtice C. Luther
William Mason & Diana Davis
Ann & Philip May



Opera makes me feel connected to
human history—all of the emotions and
experiences and wonder of our creative
existence, refined and expressed over
millennia.

Thomas G.

James McClain
William & Jeanine McCole
Thomas J. McCormick
Claretta Meier
Mr. & Mrs. Edward S. Mills
Robert & Lois Moeller
Charles Moore
Robert Moriarty
Ms. Mary Nair
Elaine T. Newquist
Nancy A. Nichols
Gayla & Ed Nieminen
Janis Wellin Notz &
John K. Notz, Jr.
Marjory M. Olikier
Dr. & Mrs. Frederick Olson
Irmgard & Keith Olson
Jeff O'Neill
Mr. & Mrs. Bruce L. Ottley
Luis A. Pagan-Carlo, M.D.
Joan L. Pantisios
George R. Paterson &
Allen J. Frantzen
Bohdan Pauk &
Donald Carnahan
Mr. & Mrs. John Pepe
Norman & Lorraine Perman
Shirley Pfenning &
Robert J. Wilczek
Lyneta Grap Piela
Mrs. Carol Pollock

Mr. David Quell
Susan Rabe
Dr. & Mrs. Don Randel
Roseanne Zank Rega
John Reppy
Alicia & Myron Resnick
Mary Jo Rice
Ms. Enid Rieser
Mary Raffetto-Robins
Maggie Rock & Rod Adams
Dr. Marsha & Dr. Robert Rosner
Susan B. Rubnitz
Sharon Salveter &
Stephan Meyer
Mary T. Schafer
Daphne Schneider
Mr. & Mrs. Allen Schoenberger

Susan H. Schwartz
Thomas & Judy Scorza
Jim & Joan Sears
Nancy Silberman
The Sondheimer Family
Charitable Foundation
Carol D. Stein & James Sterling
Susan Farrell Stock
Mr. & Mrs. Laurence Straus
Anne Taft
James Talano
Carl & Marilynn Thoma
Mr. & Mrs. Harold B. Tobin
Joanne Tremulis
Dulcie L. Truitt
Mr. & Mrs. Michael I. Vender
James Verraster
Todd & Cari Vieregg
Stephen & Karen Walton
Tamra & Jack Weiss
Caroline C. Wheeler
Dr. & Mrs. Lawrence W. Wick
Mr. Lee Wille
Chip & Jean Wood
Mr. & Mrs. William R. Yowell
Francesca Zambello

AFICIONADO**\$1,000 to \$1,999**

Anonymous (17)
Karen & Herand Abcarian

Mr. & Mrs. Sherwin D. Abrams
Ann Acker
Kathleen & Bruce Adamec
Mr. David R. Adler
Judith A. Akers
Giustino Albanese
Robert Albert
Dr. and Mrs. Carl H. Albright
Mr. Charles Alcaraz &
Dr. Liana Tremmel
Carnot & Luceile Allen
Foundation
Celia Althage
Dr. & Mrs. Ronald F. Altman
Sheila & James Amend
Charles & Mary Anderson
David Anderson
Doris W. Angell
Dr. Michael Angell
Dr. Edward Applebaum &
Dr. Eva Redel
Angela Arnott
Kathleen Arthur & Stephen Wood
Shirley M. Ballak
Mr. Stan Balog
Patrick & Mariterese Balthrop

John & Claudia Boatright
Neil Bogue
Terence & Mary Jeanne Bolger
Robert & Anne Bolz Charitable
Trust
Mr. & Mrs. David Bomier
Mr. & Mrs. Thaddeus M. Bond, Sr.
Anastasia Boucouras
Donald F. Bouseman
Michael Bradie
Mr. & Mrs. Eric Brandfonbrener
Christopher J. Brathwaite
Mr. & Mrs. Edward H. Bruske III
Warren & Patricia Buckler
Dr. & Mrs. Gerald P. Budzik
Howard & Moira Buhse
Mr. Jack Buoscio
George J. Burrows
Philip Charles Burton
Ms. Bonnie Bush
Robert J. Callahan
Mrs. Jane Calvin
Cathleen Cameron
Jacquelyn Campagnolo
William Cape
William & Gina Carithers

Rosanne Diamond
Mr. & Mrs. Roger F. Dickinson
Sara Dix
Ms. Louise Dixon
Mariclaire & Lowell Dixon
Ruth & Joseph Doninger
Mr. & Mrs. Ramsey B. Donnell
Mr. & Ms. Thomas Donnelley
Maureen Dooley
Ms. Jill Dougherty
Tom Draski
Susan Duda
Mr. & Mrs. Elliott E. Dudnik
Mr. & Mrs. Richard W. Durkes
Frank & Faith Dusek
Ms. Roma Dybalski
Kimberly A. Eberlein
Jon Ekdahl & Marcia Opp
Tom Elliott
Bob Ellis
Mr. & Mrs. James G. Ellis
Paul Epner & Janet Gans Epner
Robert Evans
Carter & Lucia Findley
Susan & Larry Yellen
Marilyn E. Fites
James Fitzgerald
Ms. Karen E. Flanagan
R. Michael Flores, MD &
Prof. Alan Grigg
Nona C. Flores
Paul Fong
Ms. Ashley L. Ford
Eloise C. Foster
Penny & John Freund
Raymond A. Frick, Jr.
Priscilla & Henry Frisch
Ms. Phyllis Funkenbusch
Mr. & Mrs. Kenneth Gaile
Mr. & Mrs. Dale J. Garber
Stephen & Elizabeth Geer
Carolyn & Stephen Geldermann
Generations Fund
William Georgis
Mr. & Mrs. John E. Gepson
Gregory Geuther
Stephen & Ruth Gieser
Hugh & Doris Gilbert
Mrs. Patricia Gill
Ms. Robyn R. Gilliom &
Mr. Richard Friedman
Cindy Gilmore
David L. Gitomer
Dr. Paul B. Glickman
Mr. & Mrs. Samuel D. Golden
Amy & Michael Gordon
Mr. Andrew Gore
Enid Goubeaux
Mr. & Mrs. Delmon Grapes
Ginger Griffin
Ms. Julie Griffin
John R. Grimes
Matthias Grosse Perdekamp
Robert Grover
Carl Halperin
Mr. Stephen Ham
Charles Hample & Frances Bly
Mr. Larry Hanes
Dean P. Hansen

Michael G. Hansen &
Nancy E. Randa
Sue Hanson
Charles Hanusin
Marilyn Harder
Paula Harshaw
Mr. & Mrs. Edward Hartigan
Daggett Harvey
Adam Heckman
James & Anne Heger
Sheila Ann Hegy
Ross & Andrea Heim
Robert Heitsch
Mr. & Mrs. William E. Herzog
Thomas W. & Helen C. Hill
Edward C. Hirschland
Marion Hoffman
Mr. Joseph Hogan
Jim & Wanda Hollensteiner
Bernard H. & Edith A. Holst
George R. Honig, M.D. &
Olga Weiss
Ms. Janice L. Honigberg &
Mr. John A. Hedges
Larry & Ann Hossack
Mr. & Mrs. R. Thomas Howell, Jr.
Dr. Wei Hsueh
Mr. & Ms. Gary Huff
William & Sarah Hufford
Mr. & Mrs. Peter Huizenga
Adrienne Jackiw
Mr. & Mrs. Paul A. James
Ms. Cynthia J. Jameson
Judy Hughes Janowiak
Norman Jeddleloh
Don & Susan Jeffers
Kim Jensen & Tom Elsen
Annette Johnson
Mary R. Johnson, M.D.
Mr. & Mrs. Thomas Johnston
Dr. Peter H. Jones &
Marian M. Pearcy
Michael Kalata
Marianne E. Kalinke
Anita J. Kallman
Nancy Katz
Mr. & Mrs. Dan Kearney
Mr. Peter Keehn
Patricia Kersey &
Charles Erlichman
Mr. Basil Kezios &
Ms. Carole L. Heiman-Kezios
Carolyn & Gordon Kirk
Diane F. Klotnia
Emily & Christopher Knight
Emil J. & Marie D. Kochton
Foundation
Roger & Diane Koenker
Edward & Adrienne Kolb
William Konczyk &
Stanley Conlon
Mr. Gary Koppelberger
John Koski
Ms. Constance A. Kozikowski
Stephen Kraft
Mr. & Mrs. Robert E. Krainer
Mr. & Mrs. Jordan Krugel
George Kuebler



Lyric is where we learned to love opera
for the past 25 years and holds a special
place for us, and we want to ensure the
quality of the art form perseveres.

Lance and Marcy F.

Mr. & Mrs. Theodore Banks
Mr. & Mrs. Peter J. Barack
Leslie Barker
Shirley Baron
Mr. & Mrs. Peter Barrett
Mr. & Mrs. Robert G. Baum
Patricia Bayerlein &
Michael Hoffman
Priscilla & Anthony Beadell
W.C. Beatty
Mr. & Ms. Beck
Judith B. Thomas
Martha Bell
Roy C. Bergstrom
Dr. Leonard & Phyllis Berlin
Jane Berry
Kyle & Marge Bevers
Jerry & Kathy Biederman
Mr. & Mrs. John Bienko
Richard Blackwell &
Linda Christianson
Georgia Blalock
Elaine & Harold Blatt
Dr. Debra Zahay Blatz
Elizabeth & David Blinderman
E. M. Bluhm
Mr. & Mrs. Daniel L. Blumen
D. Jeffrey & Joan H. Blumenthal

Walter & Nancy Carlson
Mr. Rowland W. Chang
Mrs. Beatrice Chapman
Mr. Donald Clark
Ms. Betty L. Cleeland
Chris Bingham & Shari Williams
Margery & Robert Coen
Dr. Edward A. Cole &
Dr. Christine A. Rydel
Maryclaire Collins
Dr. Frank F. Conlon
Dr. Thomas Conner
Katherine Hutter Coyner
Stuart Creason
Ms. Patricia S. Crise
David Curry
Czarkowski Family
Silvija & John Danielson
Jason Dantico
Ms. Janet Dauparas &
Mr. Tomas Palubinskas
Sally Davidson
Frank Davis
Marietta Dean-Weston
Patty Litton Delony
Richard Demenus
Jon W. DeMoss
Mr. & Mrs. John DeWolf

Dr. Axel Kunzmann &
Mr. Bruce J. Nelson
Mr. Arthur Ladenburger
Laimonis & Kristina Laimins
Elisabeth M. Landes
Mr. & Mrs. Frederick Langrehr
David Larsen
Harold & Neysa Laughlin
Laurie Lawton
Mr. & Mrs. Young I. Lee
Eileen Leiderman &
Ben L. Brener
Laurence Leive
Dominique Leonardi
Dr. & Mrs. Peter Letarte
Mrs. Nancy Levi
David Levinson & Kathy Kirn
Michael & Debra Liccar
Dr. Judith Lichtenstein
Mr. James Liechty
Katherine Lin
Al & Patricia Linnerud
Lawrence Lipking
Caroline P. Lippert
Sherry & Mel Lopata
Sharon & Henry Lorsch
Wayne R. Lueders
Lutz Family Foundation
Gary MacDougal
Mrs. Diane L. Macewicz
Edward Mack
Jeffrey & Paula Malak
Cantor Andrea Rae Markowicz
Lester & Mary Jane Marriner
Mr. & Mrs. Miles Marsh
David J. Martin
Mr. & Mrs. Ronald Martin
Anna Mattson
Dr. & Mrs. John E. Mazuski
Mr. & Mrs. Jeffrey S. McCreary
Dr. W. & Dr. M.J. McCulloch
Marie Mckellar
Maryjanet McNamara
Mr. & Mrs. Leland V. Meader
Mr. & Mrs. Peter M. Mesrobian
Barb & Bob Meyer
Ms. Nancy Meyerson
Mr. Joseph Michalak
Michuda Construction, Inc.
Barry & Sharon Millman
Vee Minarich
Mr. & Mrs. David Mintzer
Lee & Barbara Mitchell
William Mondri
Toni-Marie Montgomery DMA
Steven Montner & Scott Brown
Mark Moore
Noel & Michele Moore
Mr. & Mrs. William H. Moore IV
Lloyd Morgan
John A. Morrison
John S. Mrowiec &
Dr. Karen L. Granda
J. Thomas Mullen

Mary Anne Lynskey &
John F. Mullins
Dr. John S. & Nan D. Munn
Mr. George Murphy
Thomas Myles
Dr. Belverd Needles &
Dr. Marian Powers
Dr. Gilberto S. Neri Jr, MD
Lenz & Eva Neuhauser
Robert Nicholson
Mrs. Anthony A. Nichols
Jeffrey Nichols
Eleanor A. Nicholson
Mr. & Mrs. Anthony Nocchiero
Jim & Gladys Nutt
Gail O'Gorman
Mr. Michael K. Oman
Mrs. Virginia A. O'Neill
Ms. Alexandra Oprescu
Ms. Leslie Osterberg &
Mr. Lawrence Osterberg
Gerald L. Padbury
Mr. & Mrs. Robert Paddock
Mr. John G. Palfrey &
Mrs. Catherine A. Carter
Katherine Pappas
Edmond Parker
Bruce & Nancy Payne
Lorna & Ellard Pfaelzer
William & Meg Phelan
Ms. Constance Philipps
Joseph & Golnar Phillips
John J. W. Plampin
Peter Polak
Mrs. Charlene Posner &
Mr. Richard Posner
Gail S. Prins & Alice S. Wisse
Matous Ptacek
Roberta Lyn Anderson Rains
Dorothy V. Ramm
Jeffrey Rappin & Penny Brown
Dr. & Mrs. Pradeep Rattan
Cheryl Rayner
Ross & Mary Read
Mr. Daniel Real
James T. & Karen C. Reid
Jerry & Carole Ringer
Dr. & Mrs. Jared Robins
Elizabeth Rochford
Gabriel & Beth Rodriguez
Anita Rogers
Ms. Nanajan N. Yakoub &
Mr. James W. Rogge
Matthew Roob
Trisha Rooney
Mr. Samuel Rosenberg &
Dr. Karen Altay
Dr. & Mrs. Ricardo Rosenkranz
Babette Rosenthal
Lorelei Rosenthal
Drs. Ronald & Linda Rosenthal
Mrs. & Mr. Kay C. Rossiter
Maija Rothenberg
Drs. Cynthia & Gary Ruoff

Eugene W. Rzym
Dr. & Mrs. Hans Sachse
John Sagos
Pamela Sandborg
Richard H. Sanders
Robert & Mary Ann Savard
Patricia Schaefer
Eric & Margaret Scheyer
Mrs. Rosita M. Schloss
Nancy Schmitt
Rita Schnell
The Schroeder Foundation
Michelle H. Schultz MD
Edward & Irma Schwartz,
Michael Schwartz, Lisa
Schwartz, David Schwartz &
Marcy Miller
Julie Schwertfeger &
Alexander Zajczenko
Mr. John Beldon Scott &
Ms. Katherine H. Tachau
Mr. & Mrs. John E. Scully
Valentine & Blagovesta Seng
David Shapiro
Jane A. Shapiro
Myron & Beverly Shapiro
David Shayne
Mr. & Mrs. James F. Shea
Kate Sheehan
Thomas & Pamela Sheffield
Ms. Shannon Shin
Carolyn M. Short
Cherie Shreck
Dr. & Mrs. Kenneth I. Siegel
Mr. & Mrs. Frank M. Sims
Margles Singleton
Arthur B. Smith, Jr. & T
racey L. Truesdale
Barbara Smith &
Timothy Burroughs
Melissa & Chuck Smith
Louise K. Smith
Mr. Reeves E. Smith
Sunghee Sohn
S. & Anda Sokalski
Larry & Marge Sondler
Dr. & Mrs. Hugo Sonnenschein
Mr. & Mrs. O. J. Sopranos
Carole & Bob Sorensen
Ron Bauer & Michael Spencer
Spertus Family Fund
Dr. & Mrs. Eric M. Spratford
Michael Sprinker
Ms. Julie Staley
Tessa Stark
Robert & Sandra Stein
Scott G. & Beth F.J. Stephenson
Dr. & Mrs. Lawrence A. Sterkin
Mr. Albert Stipes
Mr. Lawrence Stone
Christopher Straus
Lorna P. Straus
Devora Grynspan & Sam Stupp
Charles Sullivan

Mr. & Mrs. Nathan Tarcov
Mr. Charles A. Tausche
Susan C Taylor
Mr. & Mrs. Terrence Taylor
John & Catherine Terdich
Cheryl L. Thaxton
Linda & Ronald Thisted
William Novshek &
Lynda Thoman
Andrew J. Thomas, M.D.
Thomas B. Thuerer
Myron & Karen Hletko Tiersky
Diane Tkach & James Freundt
Ms. Janis Tomecek
Mr. James W. Tucker
Mr. & Mrs. R. P. Turcotte
Mr. & Mrs. Howard Tyner
Eric Vaang
Manuel S. Valderrama
Mr. Peter Vale
Dr. & Mrs. Jay Van Cura
Marlene A. Van Skike
Matti Bunzl & Billy Vaughn
A & T Vavasis Philanthropic Fund
Henrietta Vepstas
John N. Vinci
Ms. Lidia B. Vitello
Mrs. Barbara Vlack
Robert & Camille Von Dreele
Ms. Lucinda Wakeman
Joseph & Elizabeth Wallner
Douglas & Priscilla Walter
Louella Ward
Richard & Barbara Waxman
Audrey Weaver
Mr. & Mrs. James Wees
Mr. & Mrs. Leroy Wehrle
Richard & Karen Weiland
Susan & Arvin Weindruch
Mr. Glen Weisberg
Elizabeth Welsh
Mr. & Mrs. Melville W. Wendell
Peter J. Wender
Dr. & Mrs. Dennis K. Wentz
Dr. & Mrs. Robert D. Wertz
Patricia H. & William H. Wheeler
Margaret & Brian White
James L. Wilson &
Patricia D. Toler
Roger Wilson
Charles B. Wolf
Ted & Peggy Wolff
Christopher & Julie Wood
Nancy Wulfers
Mr. Charles Yoder
Dr. Robert G. Zadylak &
James C. Kemmerer
Michael & Judy Zeddies
William Ziemann
Miroslaw Zienkiewicz
Jacalyn Zimmerman

Due to space limitations, we are unable to list all of the generous donors who support Lyric Opera of Chicago. We extend our heartfelt gratitude to each and every one who enable us to fulfill our mission.

This list includes donors whose gifts or pledges were received by March 15, 2023

°Deceased

Commemorative gifts

Gifts of \$1,000 and above contributed in the name of a friend, loved one, or colleague are a unique expression of thoughtfulness.

IN MEMORY OF

Barbara & Michael Albanese
from Giustino Albanese & Phat Le

Dorothy Avedisian
from Meghan & Dan Burns

John R. Blair
from Mrs. John R. Blair

Mehroo Bhote & Maureen Glassberg
from Evelyn Alter

Mary C. Campagnolo
from Peter & Jackie Campagnolo

David Carpenter
from Sylvia Neil & Daniel Fischel

Anna Claire
from Patricia Mitchell

Professor James D. Compton
from an Anonymous Donor

Barbara Gail Franch
from Jim Franch

Jim Genden
from Suzanne L. Wagner

Chris Goodman
from Matthew Roob

Deborah S. Hare
from Jennifer Baryl, Julie Griffin & Greg Meadors, Sylvia Neil & Daniel Fischel, Mr. and Mrs. Scott Santi, Nancy Searle

Thomas W. Hill
from Helen C. Hill

Howard E. Jessen & Susanne C. Jessen
from the Jessen Family

Rowena Kelley
from Laura Cox, Clay & Claire Hardon

William Laird Kleine-Ahlbrandt
from Sheila Ann Hegy

Audrey Klotnia
from Diane F. Klotnia

Ardis Krainik
from Elizabeth Welsh

Florence McMillan
from Patrick & Mariterese Balthrop, Mr. & Mrs. Andrew K. Block, Patrick G. & Shirley Welsh Ryan, Lisbeth Stiffel, Karen Z. Gray-Krehbiel & John H. Krehbiel, Jr., The Crown Family

Hugo Melvoin
from Lois Melvoin

Bobby Nicholson
from David Liechty

Sarah & Peer Pedersen
from Mr. & Mrs. James Bramsen

Bella Perlman
from an Anonymous Donor

Kenneth Pigott
from Mariclaire & Lowell Dixon

Joan L. Richards
from Craig Sirls

Gianna Rolandi
from William Brock, Howard L. Gottlieb & Barbara G. Greis, The Richard P. & Susan Kiphart Family

Ronald Rolighed
from Mrs. Ronald A. Rolighed

Devin Shafron
from Dr. Phyllis W. Shafron & Mr. Ethan Lathan

Deborah Sobol
from Mr. Rowland W. Chang

Violet Staley
from the Henry M. Staley Charitable Trust

Ellen Foster Stirling
from Shawn M. Donnelley & Christopher M. Kelly, Lisbeth Stiffel, Nancy Searle

Ann Van Lente Sedman & Johanna Van Lente Vandrey
from their friends and family

Edward & Constance Wachs
from Kenneth & Marcia Dam

Joseph & Elizabeth Walczak
from Cheryl Walczak

Nancy Wald
*from the Humanist Fund
from Louella Krueger Ward*

Sarita Warshawsky
Edward T. Zasadil
from Larry G. Simpson

IN HONOR OF

Julie & Roger Baskes
from Peter J. Wender

Evelyn Crews
from Sam Crews

Angela DeStefano
from Anne P. Hokin

Stephen Dunbar
from Thomas M. Cleary

Renée Fleming
from Patrick G. & Shirley Welsh Ryan

Anthony Freud
from Robin Angly & Miles Smith, Francesca Zambello

Gael Neeson
from Mr. & Mrs. Paul Gray

Mary Galvin
from Mr. & Mrs. James G. Ellis

Marion Cameron-Gray & Doug Gray
from an anonymous donor, Susan & Bob Arthur, Donna Van Eekeren, Lee & Barbara Mitchell, Blythe Jaski McGarvie, Mr. & Mrs. Miles Marsh, Robert Moriarty, Sylvia Neil & Daniel Fischel, Alan Schriesheim, Kay Torshen

Karen Gray-Krehbiel
from Norman & Virginia Bobins/The Robert Thomas Bobins Foundation, Dr. Kris & Mrs. Trisha Rooney Alden, Mrs. James N. Bay

Caroline Huebner
from Don & Abby Funk, Margaret & Brian White, Mrs. James N. Bay

Caroline & Charlie Huebner
from Mr. & Mrs. John Ginascol

Elizabeth Hurley, Deborah Hare, & Lawrence DePilar
from Barbara Gold

Lori Ann Komisar & Morris Silverman
from Barbara Gold

Allan & Elaine Muchin
from Richard & Barbara Waxman

Sylvia Neil
from Mr. & Mrs. Richard G. Weinberg

Sue Niemi
from Concierge Unlimited International, Elaine & Harold Blatt

Greg O'Leary & Pat Kenney
from Suzanne L. Wagner

Jane Pigott
from an Anonymous Donor

Shirley & Patrick Ryan
from Brendan & Suzanne Mulshine, Robert & Penelope Steiner

Terry & Philip San Filippo
from Judith B. Thomas

Nancy Santi
from the Helen Brach Foundation

Mary Selander
from Don & Abby Funk

Jon Siner
from Mr. & Mrs. Edward S. Mills

Meaghan Stainback
from John Edelman & Suzanne Krohn

Liz Stiffel
from Mrs. James N. Bay and Mr. & Mrs. Charles K. Huebner"

Pam Szokol
from Leslie Barker

Marilee Wehman
from Patrick G. & Shirley Welsh Ryan

Joan Weiss
from Mr. & Ms. Thomas Donnelley

Women's Board Members' Birthdays
from Mr. & Mrs. Scott Santi

This list includes donors whose gifts or pledges were received by March 15, 2023.

Artistic roster

SOPRANOS

Melody Betts
Teresa Castillo
Renée Fleming
Alaysha Fox
Marya Grandy
Debbie Gravitte
Kathryn Henry
Kathryn Lewek
Alexandra LoBianco
Cecilia Violetta López
Emily Pulley
Lindsey Reynolds
Golda Schultz
Alexandria Shiner
Heidi Stober
Denis Vélez
Rachel Willis-Sørensen
Tamara Wilson

MEZZO-SOPRANOS

Katherine Beck
Austen Danielle Bohmer
J'Nai Bridges
Kayleigh Decker
Katherine DeYoung
Kathleen Felty
Hannah Fernandes
Jill Grove
Samantha Hankey
Joy Hermalyn
Maya Jacobson
Madison Kauffman
Rebecca Keeshin
Omi Lichtenstein
Lauren Marcus
Clémentine Margaine
Catherine Martin
Sarah Mesko
Zoie Reams
Liliana Renteria
Stephanie Sanchez
Estella McCarthy Schultz

COUNTERTENORS

John Holiday
Randall Scotting

TENORS

Christopher Bozeka
Lawrence Brownlee
Ryan Capozzo
Charles Castronovo
Dominick Chenes
Terrence Chin-Loy
Martin Luther Clark
Joshua Guerrero
Lunga Eric Hallam
Cornelius Johnson
Adam Kaplan
Ruchir Khazanchi
Sam Linda
Alejandro Luévanos
Will Mobley
Michael Nigro
Tommy Novak
Drew Redington
Issachah Savage
Kamari Saxon
Richard Trey Smagur
Russell Thomas
Matthew Vickers

BARITONES

David Benoit
Ian Paul Custer
Darren Drone
Norman Garrett
Rod Gilfry
Igor Golovatenko
Gordon Hawkins
Joshua Hopkins
Mark David Kaplan
Quinn Kelsey
Michael Kingston
Andrei Kymach
Will Liverman
Lucia Lucas
Andrew Manea
Laureano Quant
Ian Rucker
Daniel Scofield
Steven Skybell
Alfred Walker

BASS-BARITONES

Hidenori Inoue
Nicholas Newton
Christian Van Horn

BASSES

Matthew Anchel
Dmitriy Belosselskiy
Peixin Chen
Ron Dukes
Soloman Howard
Mirco Palazzi
Wm. Clay Thompson

SPEAKING ROLES

William Brown
Michael Kingston
Bill McGough
Jeff Parker

SOLO DANCERS

Chase Buntrock
Carl Ponce Cubero
Shane Dickson
Derek Ege
Michael Fernandez
Zachary Gonder
Vernon Gooden
Marcus Hardy
Kara Hunsinger
Noelle Kayser
Christopher Kelley
Drew Lewis
Brian Josiah Martinez
Michael Francis McBride
Morgan Reed McDaniel
Alex Meeth
Tyler Okunski
Jude M. Perry-Evans
Amanda Sachs
Oz Shoshan
Mateus Sobral Barbosa da Silva
James Monroe Stevko
Taylor Yocum

CONDUCTORS

Kazem Abdullah
Kedrick Armstrong
Sir Andrew Davis
Kimberly Grigsby
Enrique Mazzola
Henrik Nánási

DIRECTORS

Eric Einhorn
Richard Jones
Barrie Kosky
Marie Lambert-Le Bihan
Rajendra Ramoon Maharaj
David McVicar
Louisa Muller
Yuval Sharon
Bartlett Sher
Kathleen Smith Belcher
Axel Weidauer

ASSOCIATE DIRECTORS

Alexander Gedeon
Esteban Muñoz

CHORUS MASTER

Michael Black

CHILDREN'S CHORUS MASTER

Josephine Lee

CHOREOGRAPHERS

Rena Butler
Linda Dobell
Andrew George
Silvano Marraffa
Stephanie Martinez
Otto Pichler
August Tye

ASSOCIATE CHOREOGRAPHER

Adam McGaw

BALLET MISTRESS

August Tye

FIGHT CHOREOGRAPHERS

Chuck Coyl
Samantha Kaufman
Nicholas Sandys



The American Guild of Musical Artists, AFL-CIO (AGMA), is the union that represents the singers, dancers, actors, and staging personnel at Lyric Opera of Chicago.

Lyric staff

LYRIC OPERA OF CHICAGO

Anthony Freud, OBE,
General Director, President
& CEO, The Women's Board
Endowed Chair

Enrique Mazzola, Music Director,
The John D. and Alexandra C.
Nichols Endowed Chair

Drew Landmesser,
Deputy General Director and
Chief Operating Officer

Elizabeth Hurley,
Chief Advancement Officer

Vincente F. Milianti,
Chief Financial and
Administrative Officer

Matthew Ozawa, Chief Artistic
Administration Officer

Paul Gunning,
Vice President and Chief
Marketing Officer

Afton Battle, Vice President of
Artistic Operations

Jennifer E. Boyd, Vice President,
People & Culture

Robert C. Goodwin,
Vice President, Lyric Unlimited -
Learning & Creative Engagement
Development

Anna Mattson, Vice President,
Development

Andreas Melinat,
Vice President, Artistic Planning

Dan Novak, Vice President and
Director, Ryan Opera Center,
The Ryan Opera Center Board
Endowed Chair

Will Raj, Vice President,
Information Technology

Kate Sheehan, Vice President
for Principal Gifts

Michael Smallwood,
Vice President and Technical
Director, The Allan and Elaine
Muchin Endowed Chair

OFFICE OF THE GENERAL DIRECTOR

Anthony Freud, OBE, General
Director, President & CEO, The
Women's Board Endowed Chair
Gregg Valentine, Executive
Assistant, Office of the General
Director

OFFICE OF THE DEPUTY GENERAL DIRECTOR

Drew Landmesser, Deputy
General Director and Chief
Operating Officer
Joshua Carroll, Director of
Environmental Health and Safety
Ann Owens, Operations and
Commission Consultant

ARTISTIC

Matthew Ozawa,
Chief Artistic Administration Officer
Michael Black, Chorus Director and
Head of Music

Artistic Operations

Afton Battle,
Vice President of Artistic Operations

Ben Bell Bern,
Director of Company
Management

Tabitha Boorsma,
Artistic Operations Manager

Markie Gray,
Artistic Finance Manager

Kevin Krasinski, Associate Director
of Company Management

Jeffrey Jauch,
Company Management Associate

Faith Hart
Jordan Thomas,
Company Management Assistants

Artistic Planning

Andreas Melinat, Vice President,
Artistic Planning

Cory Lippiello,
Director of Artistic Programs

Evamaria Wieser,
Casting Consultant

Music Administration

Stephanie Karr, Senior Director of
Music Administration

Sarah Cohn, Manager,
Chorus and Dancers

Kourtnea Stevenson, Manager,
Orchestra and Assistant
Conductors

Annika Donnen, Associate Librarian

Christine Janicki, Orchestra
Personnel Manager

RYAN OPERA CENTER

Dan Novak, Vice President and
Director, Ryan Opera Center,
The Ryan Opera Center Board
Endowed Chair

Renée Fleming, Advisor at Large
for the Ryan Opera Center

Craig Terry, Music Director, The
Jannotta Family Endowed Chair

Julia Faulkner, Director of Vocal
Studies, Elizabeth F. Cheney
Foundation

Susanna McNatt, Manager

LYRIC UNLIMITED - LEARNING & CREATIVE ENGAGEMENT

Robert C. Goodwin,
Vice President, Lyric Unlimited -
Learning & Creative Engagement
Jill LeCesne Potter, Senior Director,
Learning Programs

Tarah Ortiz Durnbaugh, Director,
Creative Engagement

Megan Elk, Engagement Producer

Elise LaBarge, Learning Programs
Manager

Anthony Jones, Lyric Unlimited
Coordinator

ADVANCEMENT

Elizabeth Hurley,
Chief Advancement Officer

Felecia Coleman,
Executive Assistant to the
Chief Advancement Officer

Development

Anna Mattson, Vice President,
Development

Scott Podraza, Senior Director,
Fund for Lyric and Development
Operations

Claire Ryan, CFRE, Director,
Development Operations

Nate Groomwald,
Philanthropy Officer

Lauren Harrison,
Philanthropy Officer

Patrick Rybarczyk,
Philanthropy Officer

Paul D. Sprecher,
Philanthropy Officer

Meggie Keiser, Associate Director,
Fund for Lyric

Tara Lenardi, Grants Manager

Leta Mumgaard,
Manager, Board of Directors

Aaron Sorensen, Development
Operations Manager

Alec Perlow, Development Associate

Kassandra Hernandez, Development
Services Coordinator

Kitty Schwartz, Fund for Lyric
Coordinator

Mason Stahl, Development Services
Coordinator

Kate Sheehan, Vice President for
Principal Gifts

Lawrence DelPilar, Senior Director
of Development, Principal Gifts

Kendria Perry-Madden,
Senior Director of Development,
Principal Gifts

Linda Macias, Associate Director,
Principal Gifts

Mike Biver, Senior Director of
Gift Planning

Jonathan P. Siner, Senior Director
of Gift Planning

Jennifer Mindrum, Associate
Director of Gift Planning

Marisa Macella, Senior Manager,
Fundraising Events

Nick Roman, Senior Manager,
Volunteer Boards

Allison VerSteegh,
Special Events Associate

Jonah Levi-Paesky, Associate,
Volunteer Boards and Engagement
(Guild Board, Chapters, and Lyric
Young Professionals)

Will Ellis, Coordinator, Volunteer
Boards (Women's Board and
Ryan Opera Center Board)

Sara Tye, Special Events Coordinator

Kate Stirling-Vance, Wine Auction
Coordinator

Marketing and Communications

Paul Gunning, Vice President and
Chief Marketing Officer

Janie Ragsdale, Marketing and
Public Relations Coordinator

Tracy Galligher Young, Senior
Director, Marketing & Audience
Development

Brittany Gonzalez Camuy,
Director of Group Sales and
Partnerships

David Nutt, Director of Sales
and Advertising

Tasha James, Marketing Manager,
Discover Lyric Programs

Jake Fruend,
Graphic Design Specialist
Hannah Cremin,
Group Sales Associate
Jessica Pedroza, Marketing Creative
Project Associate
Victoria Pizzuto, Marketing Associate,
Advertising & Promotions

Holly H. Gilson, Senior Director,
Communications
Michael Solomon,
Director of Media Relations
David Zivan, Lead Writer & Editor
Alana Guggenheim,
Public Relations Manager

Brad Dunn, Senior Director
of Digital Initiatives
Michael Musick,
Director of Digital Marketing
Samantha Berger,
Website Content Manager

Erik Dohner,
Associate Director of Analytics
Amanda Reitenbach, Manager
of Social Media and Content
Andrew Cioffi,
Digital Content Producer

Shannan Moore,
Digital Marketing Associate

Ticketing Department/ Audience Services

Susan Harrison Niemi, Senior
Director of Audience Services
Laura Chalmers, Associate Director,
Tessitura & Ticketing
Rosemary Walsh, Sales Manager,
Customer Service & Call Center
Achilles Bezanis,
VIP Ticketing Associate
Emily Brink,
VIP Ticketing Coordinator

Zachary Adams
Marnie Baylouny
Riley Brown
Kathy Butera
Madeline Curtin
Sophia Formella
Stephanie Gubin
Miranda Munoz
Laura Osterlund
Gabe Reitemeier
Joseph Ryan
Avery Sujkowski
William Vallandigham
Celia Williams
Maria Wojtas
Ticket Staff

ADMINISTRATION

Vincente F. Milianti,
Chief Financial and
Administrative Officer

Finance

Whitney Bercek, Controller
Corey Burbridge, Senior Accountant
Nancy Ko, Accounting Manager

Loi Lazcano, Senior Accountant
Jesus Castro, Accounts Payable Lead
Faye Eisenberg, Staff Accountant
Erin Johnson,
Advancement Budget Analyst
Idalia Andrade,
Accounts Payable Associate

Angela Coleman,
*Accounts Payable
Associate*
Zachary Kurzenberger,
Financial Analyst
Roberta Lane, *Financial
and Administrative
Consultant*

**People & Culture
Jennifer E. Boyd,**

*Vice President,
People & Culture*
Stephanie Strong, *Senior
Director, People &
Culture Operations*
Dawn Cerrito, *Payroll
Director*
Linda Nguyen, *Manager,
IDEA and Music Director
Administration*
Charity Franco, *People
& Culture Operations
Associate*
Shanell Reynolds, *Payroll
Associate*
Camilla Fernandez, *Talent
Management Coordinator*
Sean Hepp, *Payroll
Coordinator*
Kristy Le, *Employee
Engagement Coordinator*

Information Technology

Will Raj, *Vice President,
Information Technology*
Eric Hayes, *Director of IT
Operations*
Rita Parida, *Director of Data
Services*
Bill Anderson, *Senior
Systems Administrator*
Carmen De La Rosa,
*Technology Support
Specialist*
Bob Helmuth, *Systems
Administrator*
Jessica Keener, *Systems
Analyst*

Facilities

John Yelen, *Senior Director
of Facilities*
Megan St. John, *Director
of Facility Operations*
David Jaworski
Ramon Alex Perez
Porters
Sheila Matthews
Lena Sneed
House Managers
Jason Thomas, *Bar Manager*
Alyssa Bisanz
Daniel Chavez
Jose Garcia Cisneros
Monica Govea
Sylvia Hernandez
David Jaworski
Anthony Lacy
Rachel Martinez
Ramon Alex Perez
Jesus Rios
Benjamin Tengkowski
Felipe Valadez
Lindsey Wolfeld
Peter Wood
Bartenders/Barbacks

Clara Blakemore
Nina Charlotten
Judith Parker
Boris Powell
Coat Check Attendants
Stefan Peters, *Maitre d'*
Patrick Dowling,
Patron Services Manager
Linda Cuellar, *Patron
Services Coordinator*
Elbert Simon, *Doorperson*
Lena Barnard
Stephanie Bulandr
Griffin Boyle
Linda Cuellar
Tim Dodd
David Jaworski
Ramon Alex Perez
Ellen Pomes
Kevin Topp
Stage Door Staff

Paulette Alonzi
Calder Amsden-Juliano
Nathan Ankrom
David Barcena
Patricia Bell
Dominic Bialecki
Chenise Brown
Summer Burk
Nadine Burruss
Nila Cabrejos Lau
Ronald Castelli
Daro Cook
Carl Corry
Anna Czechut Hoffman
Sage Czerwinski
Chaurita Davis
Marlene Delemore
Griselda Garcia
Sharon Gaston
Ione Graves
Ramona Hawkins
Gina Jacobs
Kristen Jamerson
Ariella Kahan-Harth
Marlyn Love
Jacob Malkinson
Keisha Matthews
Vanessa Maxwell
Stecy Mbemba
Thomas Miller-Boeing
Lonnie Mitchell
Bill Murray
Talia Neidorf
Steven Pace
Iris Porrata
Eduard Pulst
Frank Reckitt
John Rosenthal
Leslie Rowan
Edwina Schorn
Isabella Strazzabosco
Ursula Sturgeon
Mary Thomas
Gina Tovar
Adam Wang
Katwanya West
Cal Willis
Ushers
Gregg Brody
Box Office Manager
Richard Diver
Joseph Dunn
David Fitzgerald
Leigh Folta

Destiny Mack
Jessica Reinhart
Allan Waite
Laura Waters
*Box Office Assistant
Treasurers*

Joe Minogue,
Chief Engineer
Michael LaPorte,
Lead Engineer

Philip Casica
Anthony Fasano
Brian McMahon
Bernard McNeela
Kevin O'Keefe
Thomas Setina
Engineers

**TECHNICAL &
PRODUCTION**

Drew Landmesser,
*Deputy General Director
and Chief Operating Officer*

Technical

Michael Smallwood
*Vice President and
Technical Director,
The Allan and Elaine
Muchin Endowed Chair*
April Busch, *Technical
Operations Director*
Maria DeFabo Akin,
*Production Design
Director*
Scott Wolfson, *Associate
Technical Director*
Kathryn Johnson, *Associate
Properties Director*
Chris Maravich, *Lighting
Director, The Mary-Louise
and James S. Aargard
Lighting Director
Endowed Chair*
Benjamin McCormack,
*Assistant Technical
Director*
Julia Siple, *Technical
Finance Manager*
Sarah Riffle
Bridget Williams
*Assistant Lighting
Designers*
Joe Dockweiler,
Master Carpenter
Mike Reilly, *Head Flyman/
Automation*
Jeffrey Streichhirsch,
Automation Assistant
Chris Barker
Robert Hull, Jr.
*Rigging/Automation
Assistants*
Mark Shanabrough,
Head Shop Carpenter
Brian Grenda,
Layout Carpenter
Drew Trusk,
Head Shop Welder
Bruce Woodruff,
Layout Welder
Dan DiBennardi
Warehouse Coordinator
Dan Donahue
Justin Hull
Ryan McGovern
Assistant Carpenters

Anthony Bernardy
Tyler Gil Ramos
Connor Ingersoll
John Ingersoll
Rory McQuillan
Johnny Rivers
Chase Torringa
Luigi Trupiano
Brian Walsh
Carpenters
Anthony Coia,
Master Electrician
Soren Ersbak,
Board Operator
John Clarke, Jr.
Thomas Hull
Dan Kuh
Robert Reynolds
Assistant Electricians
Jason Combs
Thomas Fernandez
Brian Hobbs
Tristan Ramirez
Jeremy Thomas
Jose Villalpando
Amador Williams
Electricians
Nick Charlan,
Head Audio Technician
Matt Eble
Kelvin Ingram
Stephen Ptacek
Asiel Simpson
Matt Swiatkowski
Audio Technicians
Charles Reilly,
Property Master
Michael McPartlin,
Properties Crew Head
Phil Marcotte,
Prop Carpenter
Bob Ladd, *Armorer*
Rachel Boultinghouse,
Upholsterer
Michael Buerger
Gordon Granger
Robert Hartge
Assistant Properties
Johnny Collins
Adam Gorsky
Nicholas Gutierrez
John Kopecky
Frank McPartlin
Kevin McPartlin
Taylor Torringa
Properties
Brian Traynor,
Charge Artist
Michael Bensencon
Michael Murtaugh
Donna Slager
Scenic Artists
Maureen Reilly, *Costume
Director, The Richard
P. and Susan Kiphart
Endowed Chair*
Lucy Lindquist,
Wardrobe Mistress
Louie Barrios
Alice Broughton
Mary Keefe
Krystina Lowe
Bryan McDonald
Kathy Rubel
Joanna Rzepka
Marguerite Scott

Ewa Szylak
Barbara Szyllo
Isaac Turner
Megan Turner
Maggie Zabierowski
Wardrobe Staff
Samantha Holmes,
Wardrobe Crew Head

Scott Barker
Brigid Brown
Lauren Crotty
Dawn-Marie Hamilton
Charlie Junke
Wendy McCay
Dulce Santillan
Roger Weir
Dressers
Sarah Hatten, *Wigmaster
and Makeup Designer,
The Marlys A. Beider
Endowed Chair*
Allison Burkholder,
Department Coordinator
James Ogle, *Wig and
Makeup Crew Foreman*

Necole Bluhm
Katrina Brown
Davis Campbell
Martha Contreras
Brittany Crinson
Krista D'Agostino
Eric Daniels
Mattison Drobney
Katrice Garvin
June Gearon
Ansley Hughes
Chantelle Johnson
Lynn Koroulis
John Metzner
Claire Moores
Megan Pirtle
Olivia Roach
Alice Salazar
Emily Santiago
Rachel Stiles
Pat Tomlinson
Franziska Valus
Emily Young
*Wig and Makeup
Department*

Production

Rachel A. Tobias, *Production
Stage Manager*
Katrina Bachus
Kristen Barrett
Alaina Bartkowiak
Jordan Lee Braun
Lisa Kable-Blanchard
Kim Schlechter
David Toulson
Assistant Stage Directors
Katrina Bachus
Alaina Bartkowiak
Gina Hays
Sandra Moore
Stage Managers
Katrina Bachus
Kristen Barrett
Alaina Bartkowiak
Gina Hays
Sandra Moore
Daniel Sokalski
Peggy Stenger
Amy C. Thompson
Bill Walters
Assistant Stage Managers

People of Lyric

Jill LeCesne Potter
Senior Director, Learning Programs



WHAT IS YOUR ROLE HERE AT LYRIC, AND HOW LONG HAVE YOU HELD THIS POSITION?

In June 2022, I joined Lyric as the Senior Director, Learning Programs under the umbrella of Lyric Unlimited. The focus of my work is educational engagement through programs for students, educators, and members of our Chicago community.

WHAT LED YOU TO WORK AT LYRIC?

My career in arts and culture starts with my New Orleans roots; I've spent the most formative years of my professional life here in Chicago. Shortly after moving to Chicago, I accepted a position with one of the city's largest arts education organizations, where I designed and implemented programs in educational and community-based settings throughout the city and beyond, built relationships with colleagues across the country, and worked to advance racial equity in the arts. In 2022, after a bit of self-reflection, I realized it was time to carve a new path. I'm the daughter of parents who experienced segregation, and my mother and father often walked me through doors that were once closed to them. This meant weekends filled with visits to museums, theaters, myriad music venues, and so on. It remains important to me that all people, and especially people of color from the very young to the most seasoned among us, not only access artistic spaces, but lead them and see themselves reflected in them at every participatory level. Although I never anticipated working at an opera house, Lyric's vision and values aligned perfectly with what I was seeking in my next position. With a demonstrated commitment to artistic excellence and inclusivity, and the challenge of redefining what it means to experience opera in a changing world, what better place to begin a new chapter?

WHAT'S A TYPICAL DAY LIKE FOR YOU?

One of the most rewarding aspects of working in the arts is how dynamic things are moment-to-moment. Rarely is one day ever the same as another. For the Learning Programs team of Lyric Unlimited, the success of our programming relies on thoughtful planning and relationship-building with our colleagues, educators, and teaching artists. Being in community with one another through meaningful exchange—listening, learning, and mapping our work together—builds the foundation for innovative programming and strong partnerships.

WHAT'S THE MOST CHALLENGING ASPECT OF YOUR JOB?

I would say I am experiencing growing pains, rather than challenges. Transitioning from a mid-size arts education organization to a large institution like Lyric Opera is akin to traversing a wonderland of sorts. Nearly every day, I am discovering a new cadre of colleagues who are essential to making the magic happen. Also, opera has its own language, and that language is very new to me. I studied art history in Italy, but had I known then that one day I would be working at Lyric, I would have at least taken one course in the history of opera!

TELL US ABOUT LYRIC UNLIMITED AND HOW YOU ENGAGE WITH THE CHICAGO COMMUNITY.

In framing how Lyric Unlimited creates space for exploring opera, Lyric's President, General Director & CEO Anthony Freud often speaks of the "creative crucible." This is quite powerful—liberating even. From my perspective, Lyric Unlimited amplifies the elasticity of the form, whether teaching the form itself or using the form to teach and engage. From elementary school students learning to create an opera based on a storybook, to high school students attending their first performance and finding a space of belonging, to people on divergent paths discovering their shared humanity through the power of storytelling and music, these are some of the ways in which Lyric Unlimited engages our Chicago community. And by doing so, Lyric Unlimited has the capacity to change perceptions, remove barriers to participation, and engage broader audiences.

BEYOND OPERA, WHAT ARE YOUR OTHER PASSIONS?

I have a penchant for the handwritten letter with an insatiable appetite for fine stationery. While I appreciate the convenience of a quick text message, there's nothing like putting pen to paper crafting a beautiful missive to someone.

A FAVORITE LYRIC MOMENT?

For the dress rehearsal of *Hansel and Gretel* this season, I was in charge of welcoming student groups. While waiting in the balcony and scoping out the seats, I had the opportunity to meet two of the phenomenal ushers there, Carl and David, both of whom have been with the company for years. Both had incredible histories, with Carl formerly working as a dancer with the Joffrey Ballet, and David previously working as an opera singer and as a chorus member with Lyric. They had the most incredible stories about our space, of the experience of their own creative lives. David spoke about hearing soprano Leontyne Price for the first time, and the conversation moved him to tears. Moments like this serve as reminders that we are all just a multitude of stories. Something changes inside when we listen to the stories of another, wherever we find ourselves. From the balcony at Lyric, you will hear the best of the best. **L**