

# Air Live<sup>®</sup>

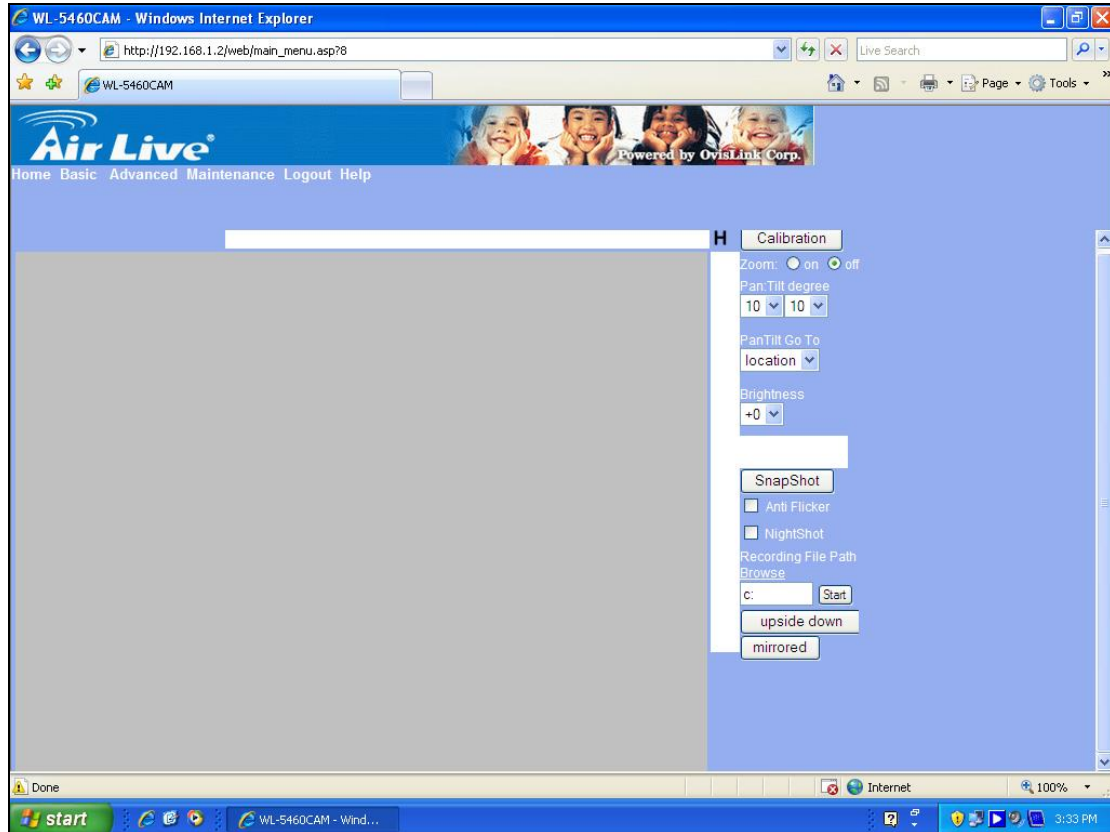
[www.airlive.com](http://www.airlive.com)

**WL-5460CAM**



## How to use MS IE7 with WL-5460CAM on Windows XP SP2

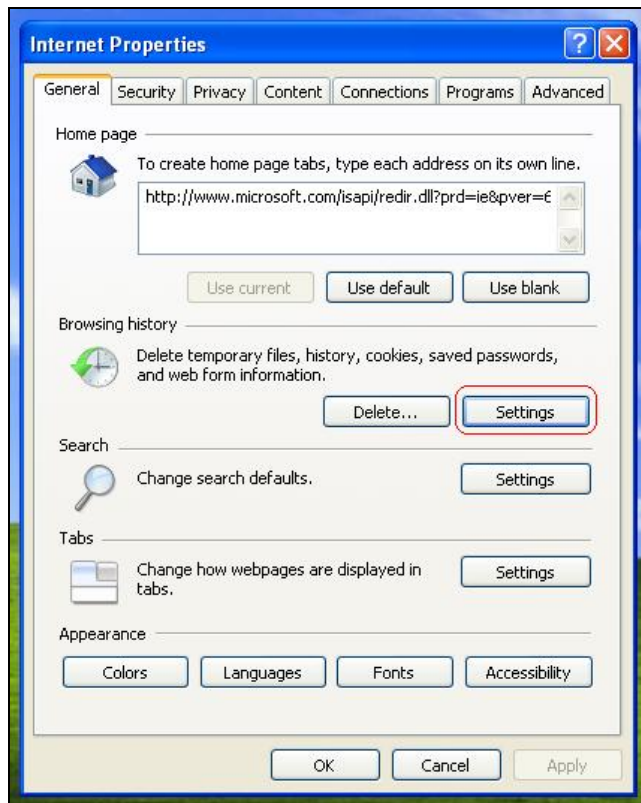
1. After having updated firmware of WL-5460CAM, the Web UI of WL-5460 Cam can not display correctly on the Microsoft IE



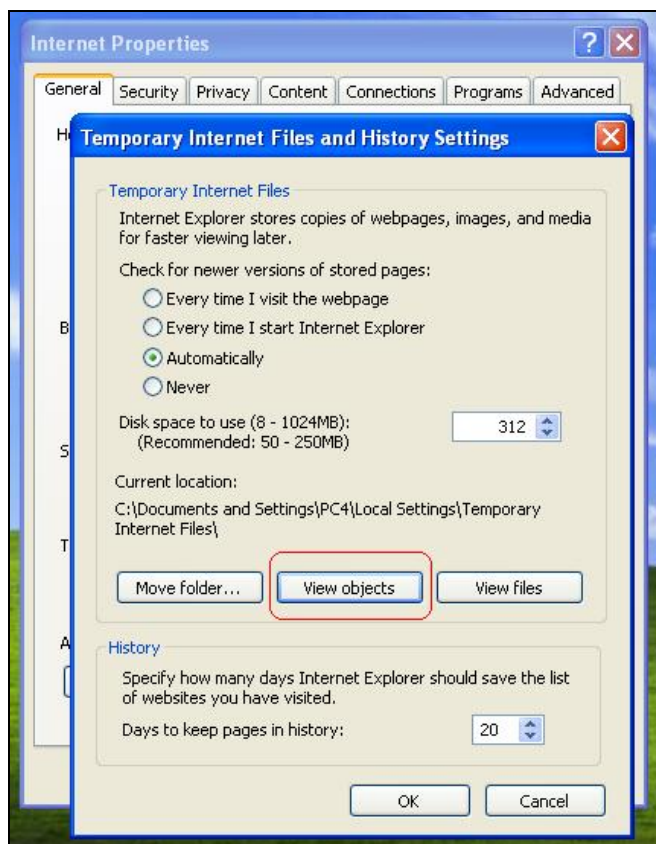
2. in this case, please “turn off all browser”, right click on the MS IE 7 icon, choose properties



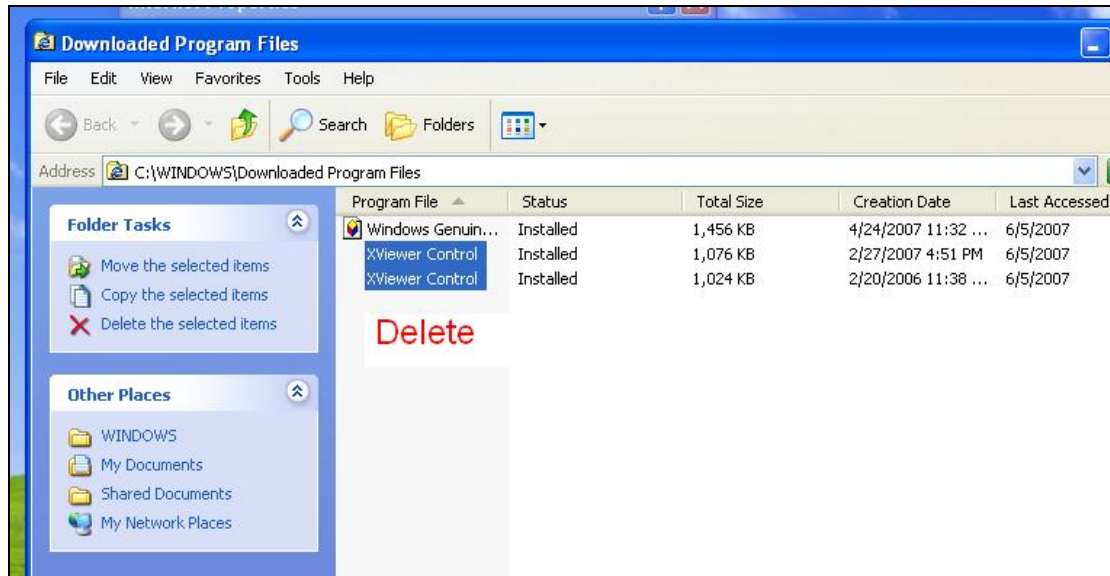
3. On the “General” angle, choose “Settings” as shown below.



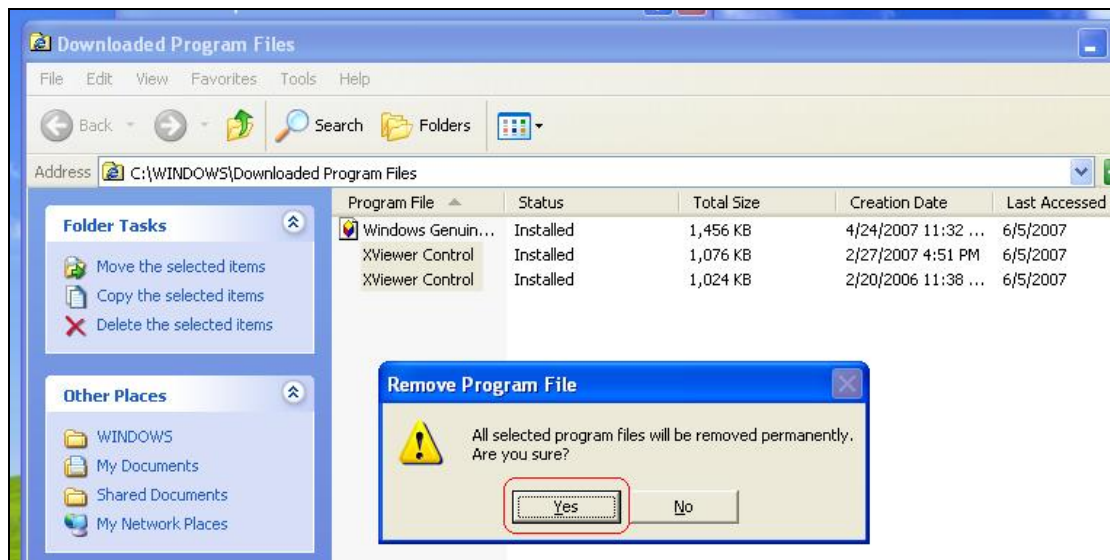
4. On the pop-up windows, click on “View objects” button



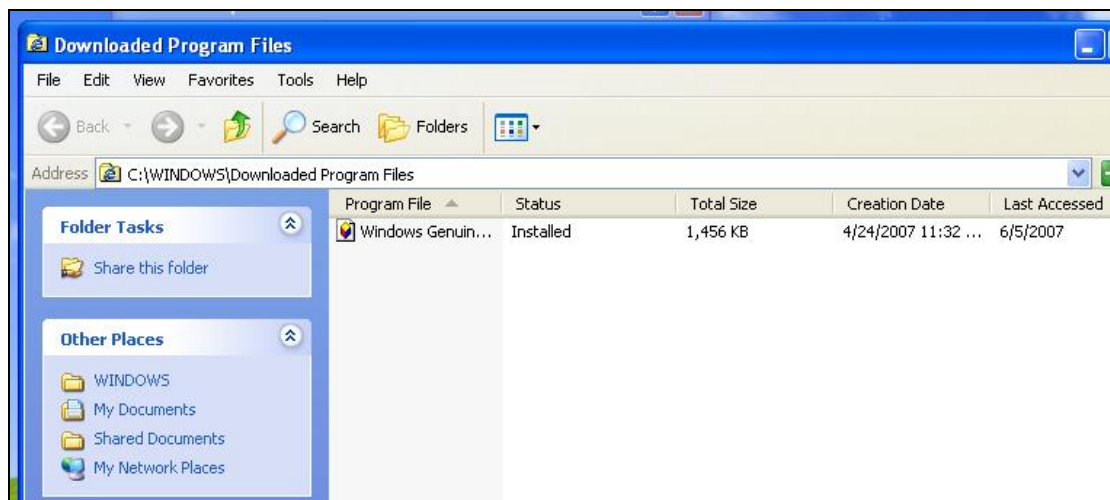
5. Open Windows Explorer, go to “C:\WINDOWS\Downloaded Program Files”, delete **ALL** XViewer control files



6. Confirm the question by clicking “Yes” button.

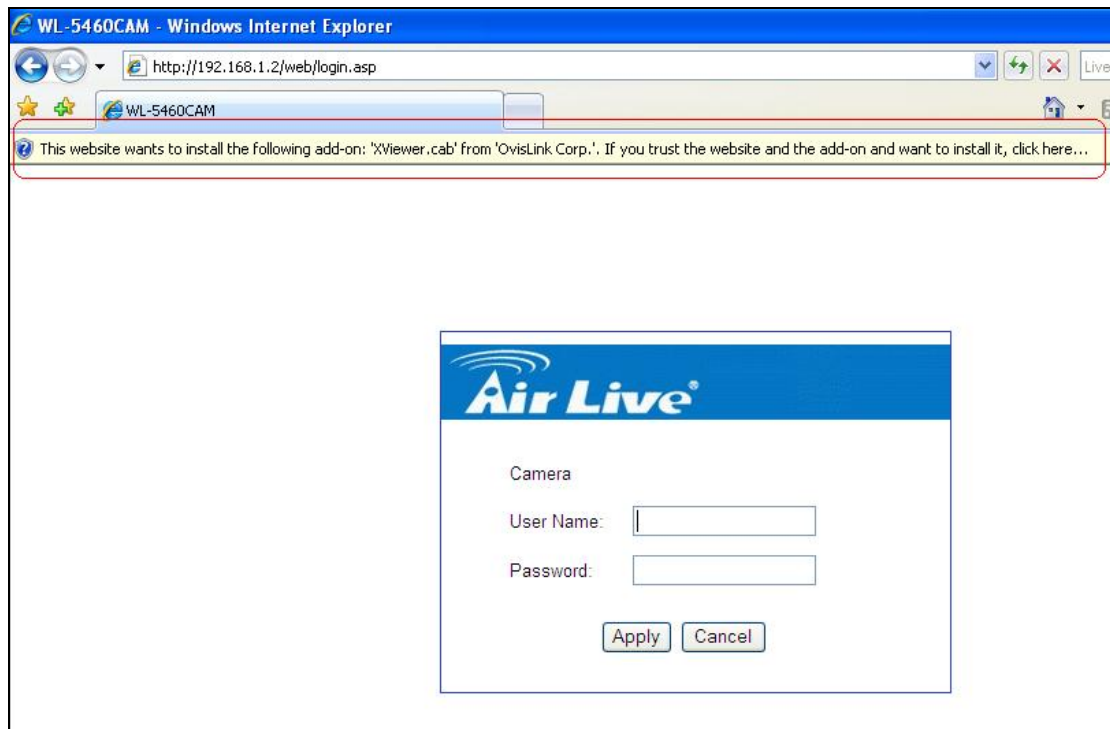


7. **ALL** XViewer control are deleted

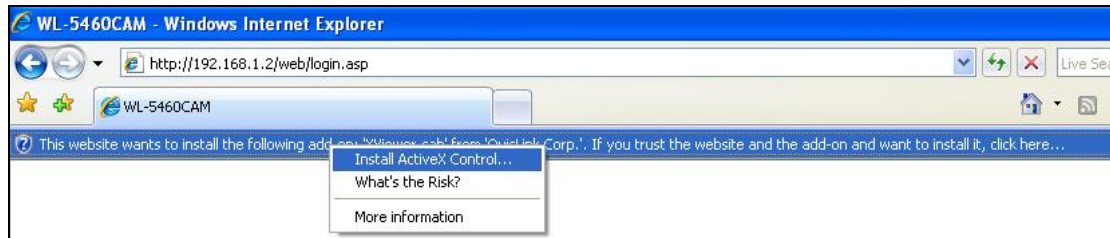




8. Turn on MS IE7 and key in the IP address of WL5460CAM, WL-5460CAM login window appears, with ActiveX option shown on the top of main window;



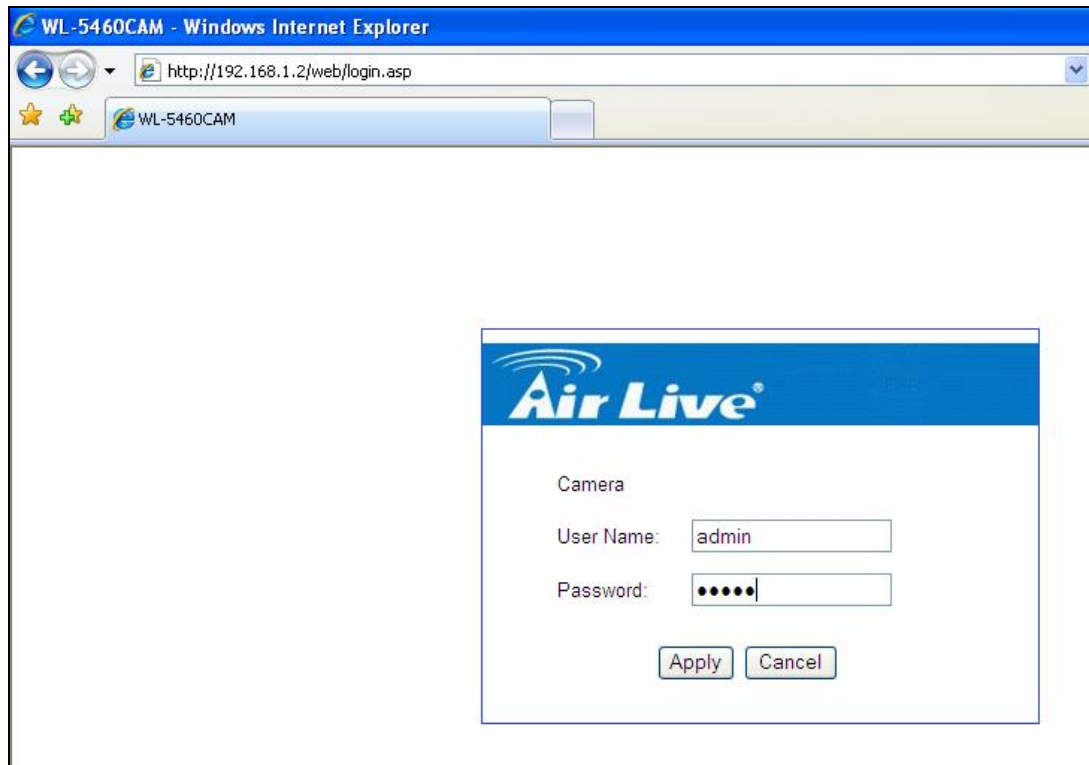
9. Click on the ActiveX option and select "Install ActiveX Control";



10. As the security alert the risk, confirm this option by clicking on "Install" button.



11. Once ActiveX finished installation, the login window appears again, and all step of login now normally.



12. WL-5460CAM Web UI displays correctly. If this screen does not display correctly, press "Ctrl" + "F5" to refresh the screen, it can display normally.

